



IJIRCCCE

e-ISSN: 2320-9801 | p-ISSN: 2320-9798



INTERNATIONAL JOURNAL OF INNOVATIVE RESEARCH

IN COMPUTER & COMMUNICATION ENGINEERING

Volume 10, Issue 5, May 2022

ISSN INTERNATIONAL
STANDARD
SERIAL
NUMBER
INDIA

Impact Factor: 8.165

 9940 572 462

 6381 907 438

 ijircce@gmail.com

 www.ijircce.com

Online Hospital Management System

Rohit Bansode, Mahesh Patil, Onkar Jagtap, Sanket Mule, Vilas Ghonge

Department of Information Technology, Pimpri Chinchwad Education Trust's Nutan Maharashtra Institute of Engineering and Technology, Savitribai Phule Pune University, India

ABSTRACT: The purpose of the "Hospital Management System" task is to apply Front Office Management of Hospital on a laptop to expand smooth-to-use, fast, and cost-powerful software program. Responsible for Patient Information Collection, Diagnostic Information, Patient History, Interim Diagnosis, Maternity History, Your Practices. Traditionally, it's miles made through hand. The number one characteristic of the machine is to check in and save affected person statistics and to gain such statistics as required, in addition to to govern the statistics in a logical manner. The Hospital Management System may be established the use of a username and password. Accessed through controller or recipient. They are the handiest ones who can upload records to the website. Data may be without difficulty retrieved. Data is properly included for non-public use and makes records processing a good deal faster[9].

KEYWORDS: web application, healthcare management, diagnosis, data insights.

I. INTRODUCTION

The Hospital Management System task consists of the registration of patients, maintaining their information withinside the machine. The software program has a completely unique identifier for each affected person and mechanically shops each affected person's statistics. It consists of a seek engine to realize the contemporary fame of every affected person. The medical doctor can seek the affected person's statistics and affected person statistics the use of the identity entification and name. The Hospital Management System may be established the use of a username and password. Accessed through controller[8]. They are the handiest ones who can upload records to the website. Data may be without difficulty retrieved. The interface is straightforward to apply. Data is properly included for non-public use and makes records processing a good deal faster. The Hospital Management System is powerful, flexible, and smooth to apply and designed and designed to supply actual unattainable advantages to hospitals. The Hospital Management System is designed for Ayurvedic hospitals, protecting a huge variety of health facility control and control approaches. It is a complete Integrated Hospital Management System that gives applicable statistics at some point of the health facility, helping powerful decision-making of affected person care, health facility control and important accounting, with remarkable mobility.

Hospital Management System is a software program product suite designed to enhance the great and control of health facility control withinside the discipline of medical system and cost-primarily based totally analysis. The Hospital Management System allows you to enhance your employer and enhance its performance and great of paintings. Proper control of the approaches which can be important to the fulfillment of the health facility lets you control your approaches.

II. PROBLEMSTATEMENT

As the health facility is related to the lives of normal human beings and their everyday sports we've got consequently determined to paintings in this task. Managing the report in individual is time eating and really not unusualplace in making mistakes. The cause of this task is to automate or carry out online, the system of every day obligations including New Patient Admission, Patient Treatment, Collecting Patient Data and sooner or later downloading affected person records efficaciously etc. We have attempted our fine to make the complicated system of Hospital Management System as smooth as feasible the use of the Structured & Modular & interface-guided method to the menu.

III. PREVIOUSWORK

Lack of instant recovery: - Very hard get records and get something comparable records- Eg - To discover a affected person history, the consumer has to undergo numerous registers. This consequences in a waste of time.

Lack of instant information retention: - The records generated with the aid of using numerous transactions it takes time to maintain it withinside the proper place.

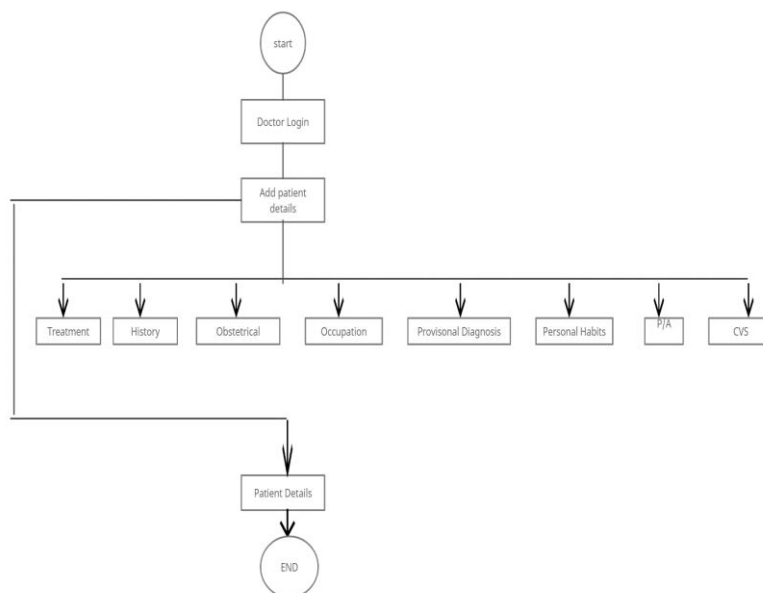
Lack of instant renewal: - Various adjustments in records as a affected person is difficult to do as paper paintings is involved.

Manual calculation mistakes: - Manual Mathematical mistakes can arise and take a number of times this could bring about wrong records. Because an instance of a affected person-primarily based totally accounting calculation numerous treatments.

Preparing correct and speedy reports: - It is difficult paintings to collect records approximately sufferersfrom numerous registers[9].

IV. METHODOLOGY

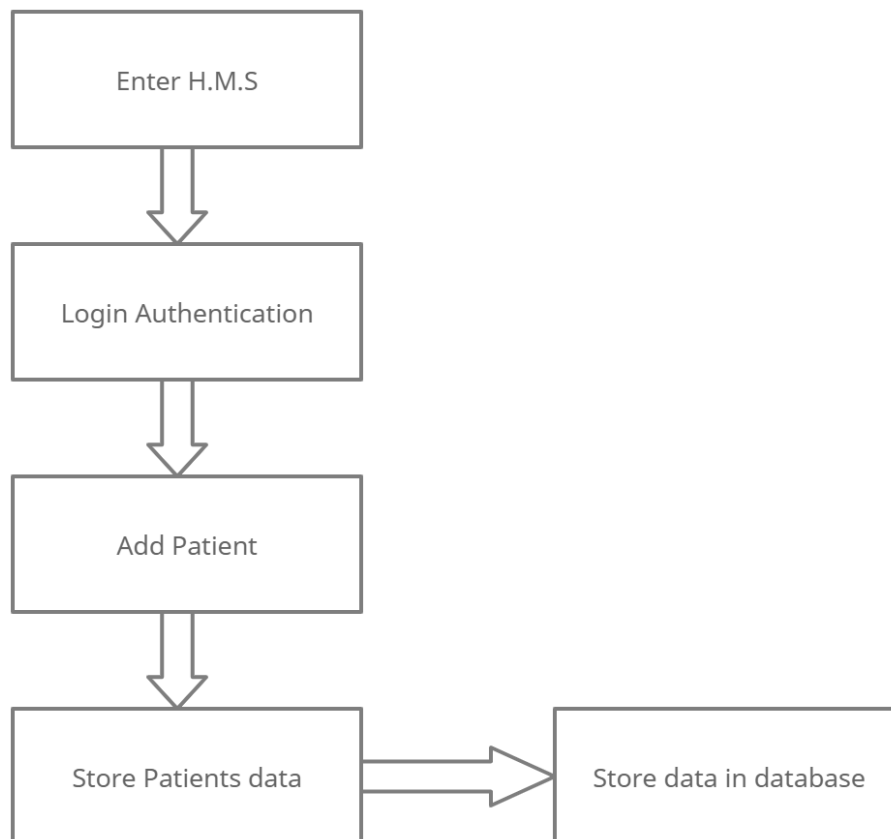
This device specializes in administrator module. i.e. physician. The physician module is designed in order that physician can collect Patient information, shop affected person information and paintings accordingly. The device is constructed the usage of waterfall improvement model. The device is mainly designed for Ayurved Hospitals wherein Ayurved specialised docs can shop, replace and control the information of diseased person. Doctor can retrieve affected person information and think about the saved records in green manner [4].



V.IMPLEMENTATION

This HMS is primarily based totally at the database, object-orientated programming language and networking techniques. My SQL (Structure Query Language) is utilized in regions wherein preserving the facts withinside the database is necessary, this device makes use of JAVASCRIPT because the front-give up software program that's an object-orientated programming method and has connectivity with My SQL, the back-give up software program[1][2]. Implementation of health facility control device mission allows to shop all of the forms of facts, offer coordination and consumer communication, enforce policies, enhance every day operations, set up the deliver chain, manipulate monetary and human resources, and marketplace health facility services [3]. This useful choice covers the wishes of the sufferers, group of workers and health facility government and simplifies their interactions. It has come to be the same old method to manipulate the health facility. Many clinics have already skilled its blessings and maintain growing new health facility control device mission modules[6][7].

SYSTEM ARCHITECTURE



VI. FUTURESCOPE

At present, this proposed device i.e. Advanced health facility control device is simplest coping with database of health facility and affected person. It has additionally blanketed lab in addition to check details. This device may be advanced with the aid of using including pharmacist as well. Keeping a music of overall remedy bought and acquired is likewise important. Also a document must be maintained approximately the entire remember of medicines. Also the complete operating group of workers may be blanketed on this device together with physician and admin. Appointment of recent group of workers like ward boys, nurses also can be blanketed. Also the operating hours of physician, nurses,

ward boy, watchmen must be blanketed withinside the device. All those forms of facts may be very beneficial for destiny use. This device can encompass many aspects, like supplying fitness tips, nutritional recommendation etc. This may be proved beneficial in controlling of numerous illnesses this is triggered because of dangerous diet. Effectiveness of the device can similarly be advanced if educated on large database[8],[9].

VII.CONCLUSION

This project Advanced Hospital Management System is for computerizing the operating in a health facility. The device looks after all of the necessities of a mean health facility and is succesful to offer clean and powerful garage of records associated with sufferers that arise to the health facility. The device is likewise allotted therefore making it to be had f for each man or woman. There isn't anyt any hazard of lack of information in view that we've backup of every and each information. This proposed device has absolutely decreased the paper paintings therefore decreasing the paintings load of operating group of workers. The device in now no longer complicated in nature and consequently may be treated very well. Patient's file may be shared on line therefore saving a number of time and effort. Also the device is mistakess loose and it avoids manipulation with the document. In order to get admission to lab panel, health facility panel and admin panel each man or woman calls for an specific ID and Password. First panel is admin panel which may be accessed simplest with the aid of using the admin in which the admin can replace (ON or OFF) the reputation of the affected person.

REFERENCES

- 1)Herbert Scheldt, Java Complete Reference, Fifth Edition, Tata McGraw Hill Edition.
- 2)Phil Hanna, JSP 2.0: The Complete Reference, Tata McGraw Hill Edition, 2003.
- 3)Elmars and Navathe, Fundamentals of Database System (Third Edition), Addison Wesley.
- 4)Ian Somerville, Software Engineering, Third Edition, Pearson Education.
- 5)Ali Bahrami, Object-Oriented System Development, Third Edition, Tata McGraw Hill Edition.
- 6)Ivan Bayross, SQL, PL/SQL programming language of Oracle, Second Edition, BPB Publication.
- 7)Matthew MacDonald, "Creating a Website - The Missing Manual", 3rd ed, 2011, O'Reilly.
- 8)Alice Kok (2012, Mar 14).Thailand: successful e-health system/articles/2009/may/14/thailand-successful-e-health-system increase-health/, accessed 19 March 2013).
- 9)Bradley Malin (2010). Guidance on De-identification of Protected Health Information. Office for Civil Rights., U.S.Department of Health & Human Services.



INNO  **SPACE**
SJIF Scientific Journal Impact Factor

Impact Factor: 8.165

doi[®]
cross **ref**

ISSN INTERNATIONAL
STANDARD
SERIAL
NUMBER
INDIA



INTERNATIONAL JOURNAL OF INNOVATIVE RESEARCH

IN COMPUTER & COMMUNICATION ENGINEERING

 **9940 572 462**  **6381 907 438**  **ijircce@gmail.com**



www.ijircce.com

Scan to save the contact details