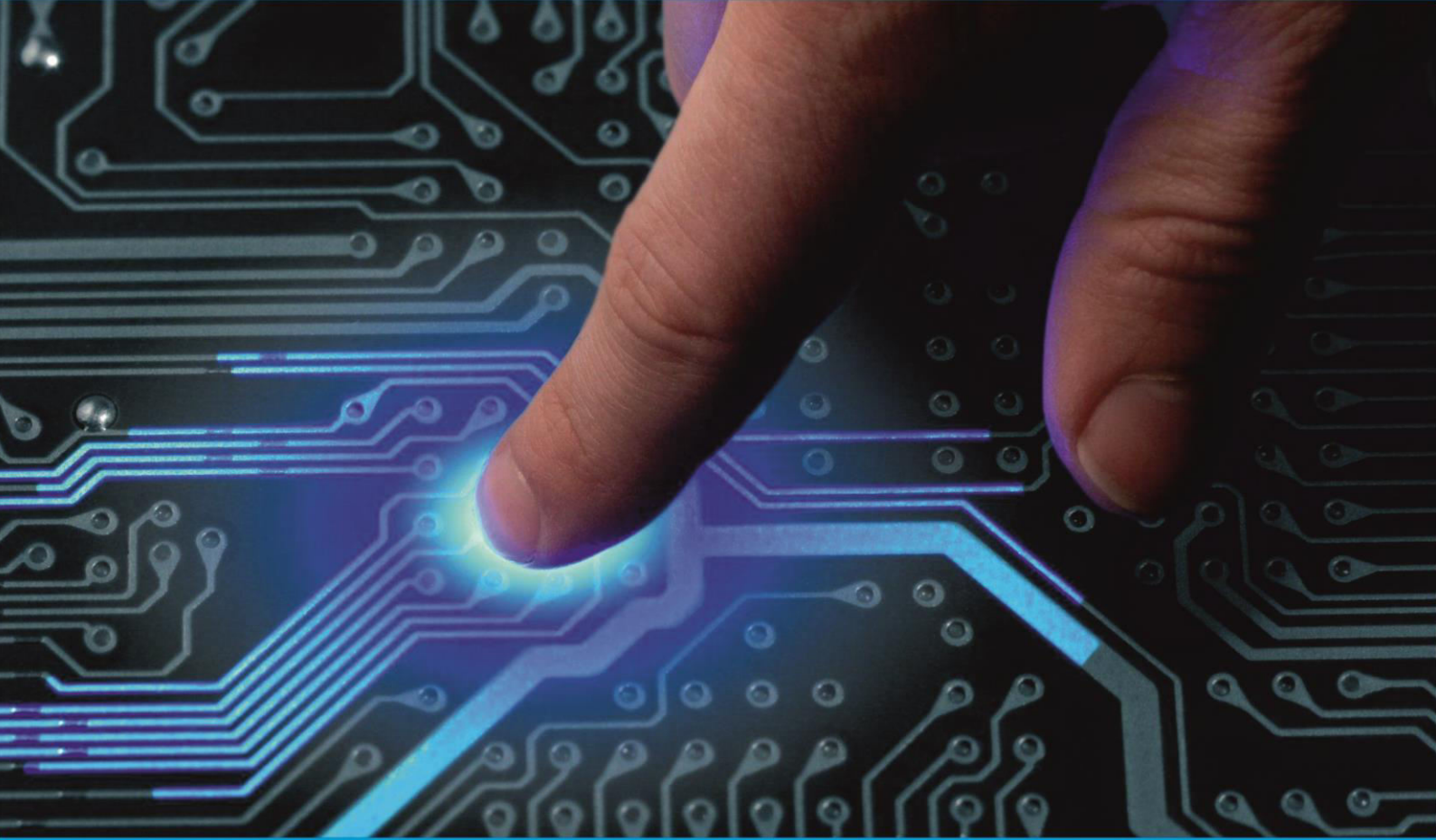




IJIRCCCE

e-ISSN: 2320-9801 | p-ISSN: 2320-9798



INTERNATIONAL JOURNAL OF INNOVATIVE RESEARCH

IN COMPUTER & COMMUNICATION ENGINEERING

Volume 9, Issue 3, March 2021

ISSN INTERNATIONAL
STANDARD
SERIAL
NUMBER
INDIA

Impact Factor: 7.488

 9940 572 462

 6381 907 438

 ijircce@gmail.com

 www.ijircce.com

Pay As You Go Authentication System for Cloud Computing

Sathosh Kumar B, Venkateshwar C, Vignesh M, Ziaudeen A, Mr. P.Prakash B.Tech M.E

Department of Computer Science and Engineering, Paavai College of Engineering, Namakkal, Tamil Nadu, India

Assistant Professor, Department of Computer Science and Engineering, Paavai College of Engineering, Namakkal,

Tamil Nadu, India

ABSTRACT: Data mining focuses on generating a useful knowledge from the data sources rather than a mere data extracting technology. Among various forms of data mining tasks, data classification is a major task for a user who wants to classify a record at hand based on the database available in the cloud. The existing privacy techniques for privacy preservation in data mining are perturbation method and secure multiparty method (SMC). But these methods are effective for the data that are not encrypted. Hence it is necessary to introduce new protocols for the classification problem in data mining for the database stored in cloud in encrypted form. We proposed the input record query classification problem of data mining task for accessing the database in encrypted form in the cloud is solved using KNN Classification method. A new privacy preserving protocol based on KNN classification method is used for protecting the privacy preservation and confidentiality of the data in the database, input query and data access.

KEYWORDS: Security, KNN classification, outsourced database, Encryption.

I. INTRODUCTION

The advent of the cloud computing drives the organization to utilize the advantage of a cloud model. The cloud computing model provides benefits in cost, flexibility, administrative overheads etc. The cloud environment presents an opportunity for the data owner to outsource their database, database management functionalities and data mining tasks by providing the access mechanisms for querying and managing the hosted database. Though the data owner achieve the benefits in terms of cost and quality of service, the data mining tasks such as query processing and query hosting will be out of control data owner control leading to the challenges in privacy preserving on data and query as well as confidentiality on the data and query access patterns. Encryption techniques provide a direct way to protect the confidentiality of the outsourced data from the cloud as well as from the unauthorized users by encrypting the data before outsourcing it. By this way, the data owner can protect the privacy of his own data. In addition, to preserve query privacy, authorized users require encrypting their queries before sending them to the cloud for evaluation. Furthermore, during query processing, the cloud can also derive useful and sensitive access patterns even if the data and query are encrypted. Hence the secure query processing needs to guarantee the confidentiality of the encrypted data, confidentiality of a user's query record and hiding data access patterns and these associated challenges are related to topic of privacy preserving data mining (PPDM).

The current PPDM methods like perturbation method and secure multiparty computation (SMC) cannot be applied in case of data that are in encrypted form. Since perturbed data does not have semantic security, perturbation techniques cannot be applied to encrypt the data. Usually the results of the perturbation methods are associated with statistical noises over the data and thus providing inaccurate data mining results. In case of SMC method the data are assumed to be distributed with each participating parties and are not encrypted. The most common type of input query processing in data mining is the classification type problem, where the user or authorized agents needs to classify his input record query based on the database that are outsourced to cloud. The input query record will be send to the cloud. The cloud computes the query record and provides the computed class label. Since the input query record will contain sensitive information it needs to be protected by way of encryption before sending it to cloud. If the database in the cloud is in encrypted form then the data mining task is called as data mining over encrypted data (DMED). In DMED

data mining tasks, the user's record needs to be protected and the data access pattern also needs to be protected. Hence the privacy preservation problem in DMED data mining tasks are to preserve the confidentiality of the encrypted data in the database that is being outsourced to the cloud and to preserve the confidentiality of the user's input query record as well as to hide the data access pattern from the cloud.

Apart from different classification methods that are available to solve such classification problem, K-NN classification is the widely used industry methods for the application of privacy preservation scenarios and in domains such as similarity search, pattern recognition and data mining. Hence numerous Security protocols in data mining are being developed based on the K-NN methods for the privacy preservation in data mining applications. A novel security protocol, Privacy Preservation Protocol (PPKNN) based on K-NN classification method has been developed to meet the privacy preservation and confidentiality requirement in the DMED classification task.

Considering data privacy, a traditional way to en-sure it is to rely on the server to enforce the access control after authentication [1], which means any unexpected privilege escalation will expose all data. In a shared-tenancy cloud computing environment, things become even worse. Data from different clients can be hosted on separate virtual machines (VMs) but reside on a single physical machine. Data sharing is an important functionality in cloud storage. For example, bloggers can let their friends view a subset of their private pictures; an enterprise may grant her employees access to a portion of sensitive data.

Hence the secure query processing needs to guarantee the confidentiality of the encrypted data, confidentiality of a user's query record and hiding data access patterns and these associated challenges are related to topic of privacy preserving data mining (PPDM). The current PPDM methods like perturbation method and secure multiparty computation (SMC) cannot be applied in case of data that are in encrypted form. Since perturbed data does not have semantic security, perturbation techniques cannot be applied to encrypt the data. Usually the results of the perturbation methods are associated with statistical noises over the data and thus providing inaccurate data mining results. In case of SMC method the data are assumed to be distributed with each participating parties and are not encrypted [1].

The cloud computes the query record and provides the computed class label. Since the input query record will contain sensitive information it needs to be protected by way of encryption before sending it to cloud. If the database in the cloud is in encrypted form then the data mining task is called as data mining over encrypted data (DMED)[3]. In DMED data mining tasks, the user's record needs to be protected and the data access pattern also needs to be protected. Hence the privacy preservation problem in DMED data mining tasks are to preserve the confidentiality of the encrypted data in the database that is being outsourced to the cloud and to preserve the confidentiality of the user's input query record as well as to hide the data access pattern from the cloud. The k-nearest neighbors (k-NN) algorithm is a popular and effective classification algorithm.

Due to its large storage and computational requirements, it is suitable for cloud outsourcing. However, k-NN is often run on sensitive data such as medical records, user images, or personal information [4]. It is important to protect the privacy of data in an outsourced k-NN system. Privacy preserving in k-nearest neighbor classifier is a simple data classifier, where the category (class label) of a data item is determined by using a majority vote of its neighbors, assigning the data item to the category most common among its k nearest neighbors. The input to the algorithm is a set of tuples, where one of the attributes is a class label and the other attributes are the features of the given data. While some of the tuples have known class labels, others have unknown class labels, and the task is to label those tuples with unknown class labels.

The class label for any tuple t is determined with the following procedure:

- Measure the distance of the tuple t to each of the labelled tuples in the dataset.
- Find the set S of the k-nearest neighbors of t .

- Find the majority class label in the set S . If two or more classes have the majority decrease k by 1 until to find the majority class label.

II. RELATED WORK

In this section, we have studied previous research papers related to the privacy preserving data mining (PPDM) and query processing over encrypted data. The brief review of existing related work is as follows:

S. De Capitani di Vimercati, S. Foresti, and P. Samarati[1] Proposed a Ensuring proper privacy and protection of the information stored, communicated, processed, and disseminated in the cloud as well as of the users accessing such information is one of the grand challenges of our modern society. As a matter of fact, the advancements in the Information Technology and the diffusion of novel paradigms such as data outsourcing and cloud computing, while allowing users and companies to easily access high quality applications and services, introduce novel privacy risks of improper information disclosure and dissemination. The different aspects of the privacy are characterized in to privacy risk in the cloud, privacy risk for users, privacy risks for stored data and privacy risk for data access.

P. Samarati and S. De Capitani di Vimercati[2] Approach Data outsourcing is an emerging paradigm that allows users and companies to give their (potentially sensitive) data to external servers that then become responsible for their storage, management, and dissemination. Although data outsourcing provides many benefits, especially for parties with limited resources for managing an ever more increasing amount of data, it introduces new privacy and security concerns. The main issues that needs to be addressed for guaranteeing proper protection and access to outsourced are, data protection, query execution, private access, data integrity and correctness, access control enforcement and private collaborative computation. A first solution used for preventing a server from accessing data stored on its own machines consists in encrypting the data before outsourcing them.

H. Hu, J. Xu, C. Ren, and B. Choi [3] Proposed Query processing that preserves both the data privacy of the owner and the query privacy of the client is a new research problem. It shows increasing importance as cloud computing drives more businesses to outsource their data and querying services. However, most existing studies, including those on data outsourcing, address the data privacy and query privacy separately and cannot be applied to this problem. A holistic and efficient solution that comprises a secure traversal framework and an encryption scheme based on privacy homomorphism has been proposed. The framework is scalable to large datasets by leveraging an index-based approach. Based on that, a secure protocol for processing typical queries such as k -nearest-neighbor queries (kNN) on R-tree index has been proposed.

P. Paillier[4] approach composite residuosity class problem is a significant computational methods applied to public-key cryptography. A new trapdoor permutation and two homomorphic probabilistic encryption schemes computationally comparable to RSA has been proposed. The proposed cryptosystems, based on usual modular arithmetic, are provably secure under appropriate assumptions in the standard model. The new trapdoor mechanism is based on composite residuosity in contrast to prime residuosity. The trapdoor provides a new cryptographic building-block for conceiving public-key cryptosystems.

M. S. Islam, M. Kuzu, and M. Kantar cioglu[5] Implement Remote data storage offers reduced data management overhead for data owners in a cost effective manner. Sensitive documents, however, need to be stored in encrypted format due to security concerns. But, encrypted storage makes it difficult to search on the stored documents. Various protocols have been proposed for keyword search over encrypted data to address this issue. Most of the available protocols leak data access patterns due to efficiency reasons. A simple technique to mitigate the risk against the proposed attack at the expense of a slight increment in computational resources and communication cost was proposed. The proposed mitigation technique is generic enough to be used in conjunction with any searchable encryption scheme that reveals data access pattern. The disclosure of data access patterns during 'search over encrypted

text'. Pose a potential vulnerability. Formalized model that can be used to launch an inference attack utilizing this vulnerability and empirically show their efficiency in successfully predicting query identities. The 'hiding access pattern' is extremely important in encrypted keyword search and therefore is a necessary characteristic of a secure encrypted search scheme.

E. Shi, J. Bethencourt, T.-H. Chan, D. Song and A.Perrig[6] Proposed a scheme allows a network gateway to encrypt summaries of network flows before submitting it to an untrusted repository. When network intrusions are suspected, an authority can release a key to an auditor, allowing the auditor to decrypt flows whose attributes fall within specific ranges. However, the privacy of all irrelevant flows is still preserved. The security for Multi-dimensional Range Query over Encrypted Data and prove the security of our construction under the decision bilinear Diffie-Hellman and decision linear assumptions in certain bilinear groups was defined formally. Multi-dimensional Range Query over Encrypted Data implies a solution to its dual problem, which enables investors to trade stocks through a broker in a privacy-preserving manner.

R. Agrawal and R.Srikant[7] Design a privacy preserving data mining was addressed for a scenario in which two parties owning confidential databases wish to run a data mining algorithm on the union of their databases, without revealing any unnecessary information. The generic protocols in such a case are of no practical use and therefore more efficient protocols are required.

X. Xiao, F.Li, and B. Yao [8] Proposed a mechanism to secure nearest neighbor problem, a client issues an encrypted query point to a cloud service provider and asks for an encrypted data point in the encrypted database that is closest to the query point, without allowing the server to learn the plaintexts of the data or the query and its result. The results imply that one cannot expect to find the exact encrypted nearest neighbor based on only encrypted query and encrypted data point. The proposed methods provide customizable trade-off between efficiency and communication cost, and they are as secure as the encryption scheme used to encrypt the query and the database.

Y. Qi and M. J. Atallah[9] Approach privacy preserving k-NN search is where two parties want to cooperatively compute the k nearest neighbors to a query point without revealing their private inputs to the other party. An improved the single-step protocol in both in terms of efficiency and privacy (no information leakage).It also gave a multi-step protocol for the algorithm proposed to meet the efficiency requirements of k-NN search with complex high-dimensional and adaptable distance functions and further gave a case study of sequence data as an application of our multi-step k-NN protocol.

C. Gentry[10] proposed a totally homomorphic security arrangement is prescribed that permits one to survey circuits over secured data without having the capacity to decode. Our cure comes in three activities. Starting, we offer a typical result that, to assemble a security plan that permits appraisal of unessential circuits, it suffices to make a security plan that can survey (marginally upgraded releases of) its own unscrambling circuit; we contact an arrangement that can evaluate its (increased) decoding circuit boots trappable. Grid based cryptosystems for the most part have unscrambling calculations with low circuit multifaceted nature, frequently secured with an internal thing calculation that is in NC1.

III. PROPOSED SYSTEM

The proposed system focus on solving the classification problem over encrypted data. In the proposed system, a new privacy preservation protocol based on KNN classification method is introduced to protect the confidentiality of data, privacy of user's input query and to hide the data access pattern.

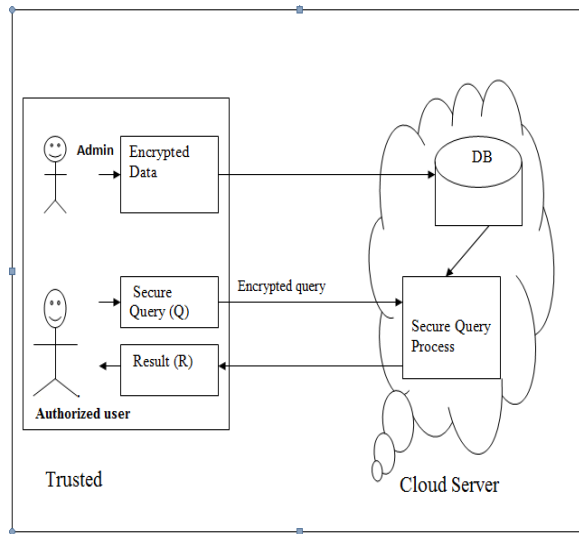


Figure 3.1 Architecture Diagram

Using a Homomorphic encryption allows complex mathematical operations to be performed on encrypted data without using the original data and provides the data security in cloud. The proposed algorithm to preserve intermediate k nearest neighbor in the classification process should not be revealed to cloud server or any other user. The proposed algorithm develops a solution for privacy-preserving k -nearest neighbor classification which is one of the commonly used data mining tasks. It determines which the closest results are by identifying the class of minimum distance using K nearest neighbors. Refer figure 3.1 to privacy preservation for data in cloud.

The new privacy preservation protocol implementation for the input query record classification over the encrypted database in the cloud is carried by the steps,

- Secure Data Upload
- Query Processing
- Secure KNN query process

3.1 Secure Data Upload

The Admin has already registered itself. The admin is uploading the data to the cloud, before it should be encrypted. Two types of data are uploaded into the cloud. One is the normal query process data (like voter list data), and the second one is k NN query process (like X and Y values). After that the user can register to the cloud. The registered users only have permission for access to the cloud data, so the unauthorized can't access the secure data from the cloud storage. Asymmetric-key algorithms require the use of asymmetric key pairs, consisting of a private key and corresponding public key. The key to be used for each operation depends on the cryptographic process being performed. Each public / private key pair is associated with only one entity; this entity is known as the key-pair owner. The public key may be known by anyone, whereas the private key must be known and used only by the key-pair owner. Key pairs are generated by the key-pair owner.

3.2 Homomorphic Encryption:

The standard homomorphic encryption methods used for encrypting data. Homomorphic encryption is a form of encryption which allows specific types of computations to be carried out on cipher text and obtain an encrypted result which when decrypted matches the result of operations performed on the plaintext.

An encryption scheme has an algorithm that consists of four steps:

Homomorphic Encryption = {key generation, encryption, decryption, Evaluation}

Key generation: Hkeygen is an algorithm that generates a public key, an evaluation key, and a secret decryption key. The encrypted data, Using Homomorphic scheme, given two ciphertexts $E(x)$ and $E(y)$ of two plaintexts x and y

respectively, an encryption of their sum $E(x+y)$ can be efficiently computed by multiplying the ciphertexts modulo a public key $n2$, i.e., $E(x + y) = E(x).E(y) \text{ mod } n2$.

- **Encryption** – Using secret key sk it encrypts the plaintext P and generate $Esk (pt)$ and along with public key $pubk$ this cipher text CT will be sent to the server .
- **Decryption** - decrypts the cipher text C with the privacy key $privk$ to retrieve the plaintext P .
- **Evaluation** - outputs a cipher text C of $f (P)$ such that $\text{Decrypt} (privk, P) = f (P)$.

The scheme becomes Homomorphic if f can be any arbitrary function, and the resulting ciphertext of Evaluation is compact. That means it does not grow too large regardless of the complexity of function f . The Evaluation algorithm in essence means that the scheme can evaluate its own decryption algorithm. The Homomorphic Encryption has the best encryption method to ensure security and privacy of shared data.

Additive Homomorphic Encryption: A Homomorphic encryption is additive, if

$$Ek (PT1 \oplus PT2) = Ek (PT1) \oplus Ek (PT2).$$

As the encryption function is additively homomorphic, the following identities can be described: The product of two cipher texts will decrypt to the sum of their corresponding plaintexts,

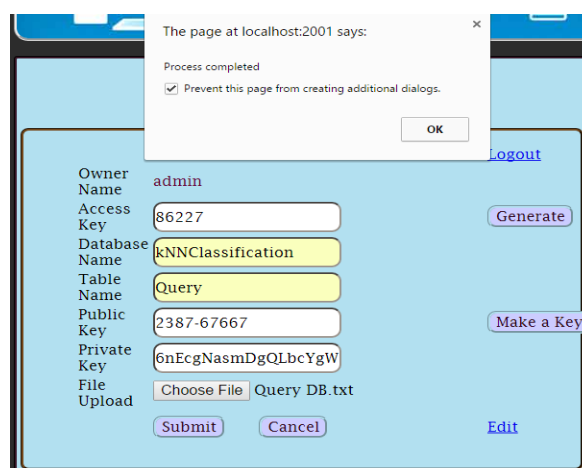
$$Dsk(Epk(PT1 \oplus PT2)) = Dsk(Epk(PT1) * Epk(PT2) \text{ mod } N2).$$

3.3 Query Processing

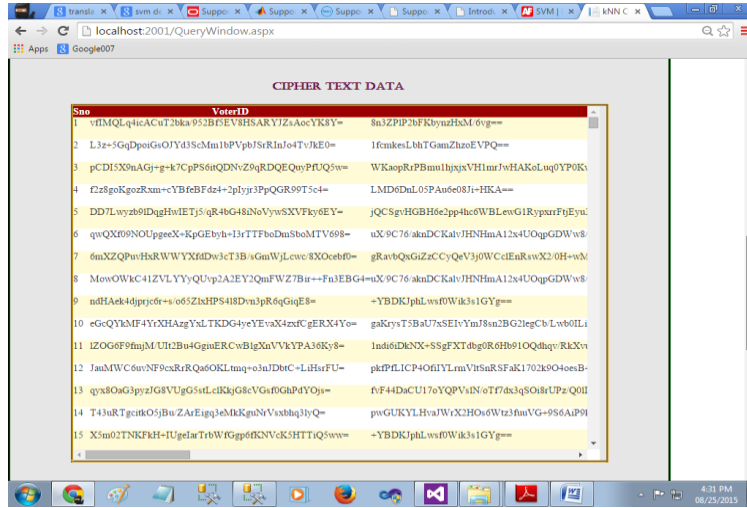
After the user login to access the normal query window. In query process window, user to select the database name, table name and data owner access code from the database. In this process to protects the confidentiality of the data, user’s input query, and hides the data access pattern. The user’s input query will encrypted and pass to the cloud database. The cloud will classify label to corresponding query record. The query can retrieve the data from the cloud and show the encrypted and decrypted data in the output window.

IV. EXPERIMENTAL ANALYSIS

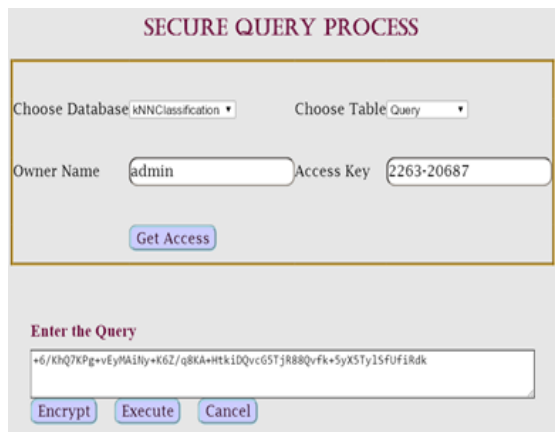
Step 1: File upload



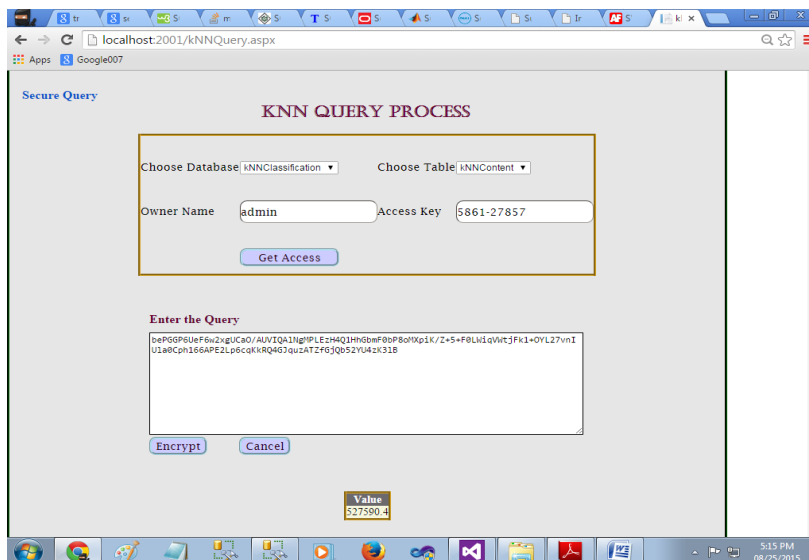
Step 2 : Confidentiality of data in cloud



Step 3: Secure Query Process



Step 4: KNN query process



V. CONCLUSION AND FUTURE WORK

The new privacy preserving protocol based on KNN classification method is being implemented to solve the input classification problem based on the database that was outsourced to the cloud in the encrypted form. This protocol defends the privacy of the data, user's input query, and conceals the data access patterns. **Future Work:** The performance of the proposed protocol depends on the efficiency of the SMINn protocol. Improving the SMINn will be the first scope of future work. Implementing this new privacy preserving protocol algorithm in the other classification methods and comparing the performance of those classification methods with current KNN classification method will be the second scope of future work.

REFERENCES

1. S. De Capitani di Vimercati, S. Foresti, and P. Samarati, "Managing and accessing data in the cloud: Privacy risks and approaches," in *proc. 7th Int. Conf. Risk Security Internet Syst.*, 2012, pp. 1-9.
2. P. Samarati and S. De Capitani di Vimercati, "Data protection in Outsourcingscenarios: Issues and direction," in *proc. Of ASIACCS, China, Apr. 2010*.
3. H. Hu, J. Xu, C. Ren, and B. Choi, "Processing Private queries over untrusted data cloud through privacy homomorphism," in *Proc, IEEE 27th Int, Conf, Data Eng.*, 2011, pp. 601-612.
4. P. Paillier, "Public key cryptosystems based on composite degree residuosity classes," in *Proc, 17th Int, Conf, Theory Appl, Cryptographic Techn.*, 1999, pp. 223-238.
5. M. S. Islam, M. Kuzu, and M. Kantarcioğlu, "Access pattern disclosure on searchable encryption: Ramification, attack and mitigation," in *NDSS*, 2012.
6. E. Shi, J. Bethencourt, T.-H. Chan, D. Song and A. Perrig "Multi-dimensional range query over encrypted data," in *IEEE Symposium on Security and Privacy (SP'07)*. IEEE, 2007, PP. 350-364.
7. R. Agrawal and R. Srikant, "Privacy-Preserving data mining," *ACM Sigmod Rec.*, vol. 29, pp. 439-450, 2000.
8. X. Xiao, F. Li, and B. Yao, "Secure nearest neighbor revisited," in *Proc, IEEE Int, Conf, Data Eng.*, 2013, pp. 733-744.
9. Y. Qi and M. J. Atallah, "Efficient privacy-preserving K-nearest neighbor search," in *Proc, IEEE 28th Int, Conf, Distrib, Comput, Syst.*, 2008, PP. 311-319.
10. C. Gentry, "Fully homomorphic encryption using ideal lattices," in *ACM STOC*, pp. 169-178, 2009.
11. B. Hore, S. Mehrota, M. Canim, and M. Kantarcioğlu, "Secure multidimensional range queries over outsourced data," *VLDB J.*, vol. 21, no. 3, pp. 333-358, 2012.
12. W. K. Wong, D. W.-L. Cheung, B. Kao, and N. Mamoulis, "Secure kNN computation on encrypted databases," in *Proc. ACM SIGMOD Int. Conf. Manage. Data*, 2009, pp. 139-152.
13. Y. Elmehdwi, B. K. Samanthula, and W. Jiang, "Secure k-nearest neighbor query over encrypted data in outsourced environments," in *Proc. IEEE 30th Int. Conf. Data Eng.*, 2014, pp. 664-675.
14. A. C. Yao, "Protocols for secure computations," in *Proc. 23rd Annu. Symp. Found. Comput. Sci.*, 1982, pp. 160-164.
15. Y. Lindell and B. Pinkas, "Privacy preserving data mining," in *Proc. 20th Annu. Int. Cryptol. Conf. Adv. Cryptol.*, 2000, pp. 36-54.
16. O. Goldreich, S. Micali, and A. Wigderson, "How to share a secret," *Commun. ACM*, vol. 22, pp. 612-613, 1979.
17. M. Kantarcioğlu and C. Clifton, "Privately computing a distributed k-nn classifier," in *Proc. 8th Eur. Conf. Principles Practice knowl, Discovery Databases*, 2004, pp. 279-280.



INNO SPACE
SJIF Scientific Journal Impact Factor

Impact Factor:
7.488

ISSN INTERNATIONAL
STANDARD
SERIAL
NUMBER
INDIA



INTERNATIONAL JOURNAL OF INNOVATIVE RESEARCH

IN COMPUTER & COMMUNICATION ENGINEERING

 9940 572 462  6381 907 438  ijircce@gmail.com



www.ijircce.com

Scan to save the contact details