



**IJIRCCCE**

e-ISSN: 2320-9801 | p-ISSN: 2320-9798



# INTERNATIONAL JOURNAL OF INNOVATIVE RESEARCH

IN COMPUTER & COMMUNICATION ENGINEERING

Volume 12, Issue 1, January 2024

**ISSN** INTERNATIONAL  
STANDARD  
SERIAL  
NUMBER  
INDIA

**Impact Factor: 8.379**



9940 572 462



6381 907 438



ijircce@gmail.com



www.ijircce.com



# Health Hub

Siddhesh Raikar, Shrvan Bhandigre, Pravin Bobade

Department of Computer, Jayawant Rao Sawant Polytechnic, Hadapsar, Pune, India

**ABSTRACT:** As we now in the on-going days health is the important factor of life. There is a growing need for highly advance and user friendly, also an interactive health management tool. The health hub application is the all-in-one functionality based application to help user to take care of their health with personalized manner. The application consisted of four features: heart diseases prediction, eye test, personalized diet planning and medicine reminder this all features are integrated into a single platform.

This all health hub features are essential for health management ,creating a better platform that helps to improve health by providing early and fast response for heart diseases prediction, eye care ,medicine reminder ,diet planning .Its user friendly environment and interface make it comfortable in interactive application. The health hub application well be the game changing solution for personal health management

**KEYWORDS:** Health hub application, user friendly interface ,heart disease prediction ,diet plan, medicine reminder, early detection

## I. INTRODUCTION

In todays life many people face the problem of health issues which can be fix in the early stage of disease encounter. We require and it's a need also easy to use tools to help to take health care or to stay healthy , That's why the health hub application is encountered .A perfect application that does four important things in one platform .it provide prediction to heart related issues ,checks the eyes plans and plan a personalized diet plan ,reminds for the medicine timing .In this you have to just put the inputs which should be correct and related to your problem .also it can help to catch heart issues early and save lives .

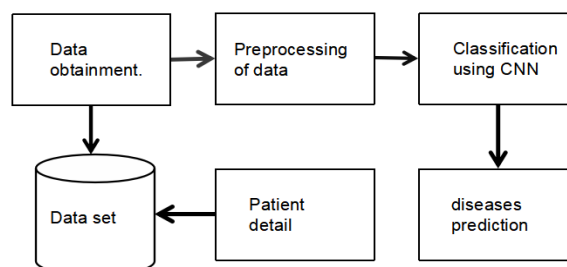
Also it provides. You to test your eyes, you can see how well you can see and check you for common eye problems. It gives you tips on what to do if there are problems regarding to your eyes vision and the colour blindness too.

Eating right is the big part of staying healthy, so for that, the Health Hub application provides a perfect system that will create a personalized diet plan as per your weight, your calories and your. Minerals required in daily life.

Lastly, it is reminding you to take your medicine as the age goes. The old age people's will required to have a perfect timing for their medicines. So our application will remind them for their medicines on correct.

## II .PROBLEM STATEMENT

And in the ongoing days we required a perfect. Healthcare Acre for our personalized healthcare. So we really required a better tool for our. Health care The Health Hub application comes in in the. Place it likes a super app that goes four important works for us. Like predicting the. Health. Related issues like heart disease prediction, eye test. Remind medicines and provide a diet plan. He was like that man.



Now we can make it easy for

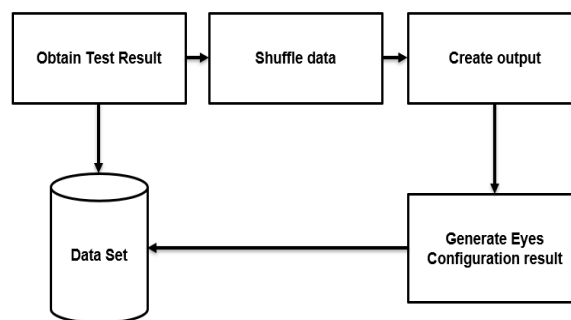
people to manage their health

in the world where health issues are very common problems. We want a perfect tool that will help us for providing. A perfect health care taker. Can find heart issues early and our vision healthy. Eat better and not forget our medicines. The Health Hub application will bring all these essential health tools together. Make it simple for everyone to stay healthy and prevent disease.

### III.METHODOLOGY

Understanding user needs.:

To create an application that will genuinely meets people health related problems needs .By understanding their unique health Problems and collecting valuable inputs from their personal stories and experience.



Research and development.

For creating this application our team has. Gathered all the information related to the tools we are getting in this application. We ensure that the app function Will work as per their requirement. Next slide.

Heart disease prediction.:

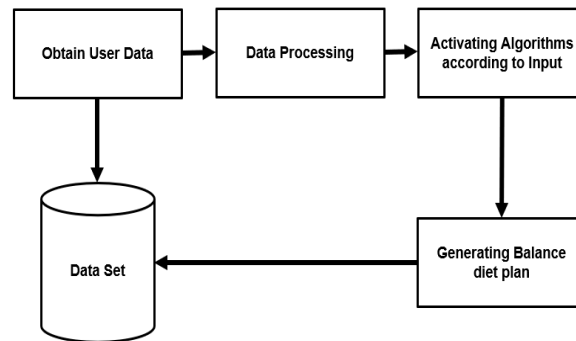
The application. Provides a prediction about the heart diseases of our computer mechanism Will. Gathered all the. Inputs are required for the Hut prediction and will analyze them. To create a perfect output or a result to the user. And identify the health risk and the related problem.

Eyes test :

Checking your eyes is simple and very important thing that we require in our daily life. This application provides A module that will check the eyes visibility balance in your eyesight. And the capacity of your eyes that for the distance of visibility.

Diet planning.:

Our app provides the best diet plan for the user. It will create a. Personalized diet plan as compared to your inputs. Which are given in the applications. And as per your weight.



Medicine reminder.:Never

Missing your medicines Is the best part of curing in early stage. As the old peoples does not reminds the time, so our application provides a medicine reminder which will remind them for their medicine time. It is very effective. Way for reminding their medicines.

Also our application provides the following. Things.:

Testing and improving.:

We place a strong and very. Perfect applications for healthcare which will test your health and. Provide an improving diet for your health. In every phase.

User friendly design.

Our application provides a user friendly environment or an interface which will make its more interactive application. For the users and provide a perfect output for them.

Privacy and security.

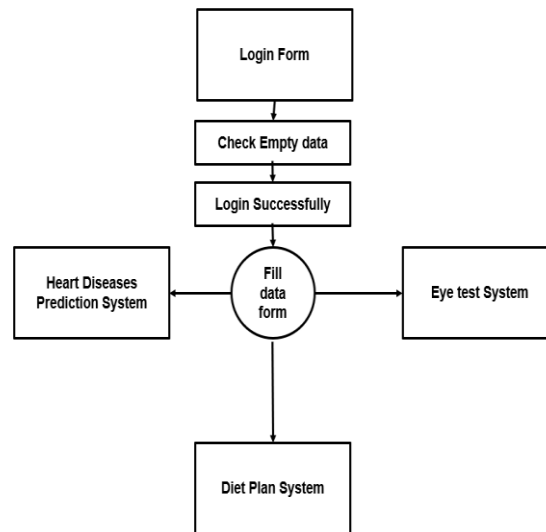
Recognizing the persons we are, checking the data or providing results that their data should be perfectly private or personalized for them. Is a very perfect security formation. Our application provides A personalized data security.

Continuous updates.:

Our application will provide a continued updates to your health. This updates will balance your. Help and provide a perfect improvement in your health.

Main module :

The main model is the combination of all these four models. Her disease prediction, diet plan. Medicine reminder and eye checkup. Combination of all of these will make the application all in one functionality.



#### IV. FUTURE SCOPE

Also, we have focused on our future scope for this application. In the upcoming times we will create the application more suitable and effective in as compared to this time. The upcoming version of this application will be more enhanced and capabilities will be increased. The health parameters will also be the increment in this part. The health parameters will provide a new AI technology which will support you for a perfect guidelines which does not require the help of doctor. You can. Cure your issues. From your home. Also we will provide an AI chat bot which will interact with you through our system and. Can discuss your issues, your health problems. And provide a perfect. Answer or result for that.

We commit that we will provide a more language supporting app. We will provide more prioritized data privacy and offer a user to control our health information.

#### V.HARDWARE AND SOFTWARE COMPONENT

- 1.Android Studio
- 2.Java
- 3.PC
- 4.Mobile phone

#### REFERENCES

[1] P.K. Anooj, --Clinical decision support system: Risk level prediction of heart disease using weightedfuzzy rules|; Journal of King Saud University –Computer and Information Sciences (2012) 24, 27 –40. Computer Science & Information Technology (CS & IT) 59

[2] Nidhi Bhatla, Kiran Jyoti”An Analysis of Heart Disease Prediction using Different DataMining Techniques”. International Journal of Engineering Research & Technology

[3]Jyoti Soni Ujma Ansari Dipesh Sharma, Sunita Soni. “Predictive Data Mining for Medical Diagnosis: An Overview of Heart Disease Prediction



**INNO**  **SPACE**  
SJIF Scientific Journal Impact Factor  
**Impact Factor: 8.379**



**ISSN** INTERNATIONAL  
STANDARD  
SERIAL  
NUMBER  
**INDIA**



# INTERNATIONAL JOURNAL OF INNOVATIVE RESEARCH

IN COMPUTER & COMMUNICATION ENGINEERING

 **9940 572 462**  **6381 907 438**  **ijircce@gmail.com**



[www.ijircce.com](http://www.ijircce.com)

Scan to save the contact details