



ISSN(Online): 2320-9801  
ISSN (Print) : 2320-9798

## International Journal of Innovative Research in Computer and Communication Engineering

(A High Impact Factor, Monthly, Peer Reviewed Journal)

Website: [www.ijircce.com](http://www.ijircce.com)

Vol. 7, Issue 1, January 2019

# Empirical Analysis of Skin Cancer Identification Using Multi- SVM Classifier

M.Ishwarya, J.Sudha, M.E.,(Ph.D.),

M.E. Computer Science and Engineering, Department of Computer Science and Engineering, A.V.C. College of  
Engineering, Mannampandal, Mayiladuthurai, Tamilnadu, India

Associate Professor, Department of Computer Science and Engineering, A.V.C. College of Engineering,  
Mannampandal, Mayiladuthurai, Tamilnadu, India

**ABSTRACT:** In today's modern world, Skin cancer is the most common cause of death amongst humans. Skin cancer is abnormal growth of skin cells most often develops on body exposed to the sunlight, but can occur anywhere on the body. This system addresses the demand for an intelligent and rapid classification system of skin cancer using contemporary highly-efficient M-SVM. In this system, mainly focus on the task of classifying the skin cancer using M-SVM. RGB images of the skin cancers are collected from the Internet. Some collected images have noises such as other organs, and tools. These images are cropped to reduce the noise for better results. The results are obtained by executing a proposed algorithm with a total of multiple images, which include five kinds of skin cancers images. In this work, different types of skin diseases are commonly classified using M-SVM. The skin cancers are classified into five groups, i.e., actinic keratoses, basal cell carcinoma, squamous cell carcinoma, melanoma and seborrheic keratoses using M-SVM and also features are extracted. Multi- Support vector Machine (M-SVM) is used for classification purpose. It identifies the given image into classified type of skin cancer.

**KEYWORDS:** M-SVM, Skin Cancer, Multi-SVM.

### I. INTRODUCTION

Skin cancer is a deadly disease. Skin has three basic layers. Skin cancer begins in cells, and innermost or third layer melanocytes cell. Squamous cell and basal cell are sometimes called non-melanoma cancers. Non-melanoma skin cancer always responds to treatment and rarely spreads to other skin tissues. Melanoma is more dangerous than most other types of skin cancer. If it is not detected at beginning stage, it is quickly invade nearby tissues and spread to other parts of the body. Formal diagnosis method to skin cancer detection is Biopsy method.

A biopsy is a method to remove a piece of tissue or a sample of cells from patient body so that it can be analyzed in a laboratory. Biopsy method is time consuming for patient as well as doctor because it takes lot of time for testing. Biopsy is done by removing skin tissue and that sample undergoes series of laboratory testing. There is possibility of spreading of disease into other part of body. It is more risky. Recently, cancer patients are increasing due to following factors: lifestyle, smoking tobacco, alcohol usage, diet, physical activity, environmental change, sun and other types of radiation, viruses and so on. Early diagnosis of the cancer helps to treat it successfully. The late diagnosis of the cancer causes the cancer spread to other nearby organs, and cannot be treat. It presented a quite automatic system for the classification of the melanomas. While composed the melanoma classification by four kinds classification and

# International Journal of Innovative Research in Computer and Communication Engineering

(A High Impact Factor, Monthly, Peer Reviewed Journal)

Website: [www.ijircce.com](http://www.ijircce.com)

Vol. 7, Issue 1, January 2019

demonstrated a classification method for melanoma using the k-means clustering, and SVM. Also presented an automatic melanomas diagnosis system. Skin cancer detection using M-SVM can prevent the unnecessary excision of perfectly harmless moles and skin lesions. Unusual swellings of cells for skin can be the skin cancer. Skin cancer is a disease in which cancer (malignant) cells are found in the outer layers of the skin. It develops in the epidermis (the outermost layer of skin), so a tumor is usually clearly visible. This makes most skin cancers detectable in the early stages. There are five common types of skin cancer, each of which is named after the type of skin cell from which it arises.

**AK** is also known as a solar keratoses, is a crusty, scaly growth caused by damage from exposure to ultraviolet radiation. AK is considered a precancer because if left alone, it could develop into a skin cancer.

**BCC** is the most common type of skin cancer. It typically appears as a small raised bump that has a pearly appearance. It is most commonly seen on areas of the skin that have received excessive sun exposure.

**SCC** is seen on the areas of the body that have been exposed to excessive sun (nose, lower lip, hands, and forehead). Often this cancer appears as a firm red bump or ulceration of the skin that does not heal.

**Melanoma** is a highly malignant skin cancer, it grows rapidly and sometimes with different colors and abnormal shapes. Melanoma has its beginnings in melanocytes, the skin cells that produce in the dark protective pigment called melanin.

**Seborrheic Keratoses** usually looks like a waxy or wart-like growth. It typically appears on the face, chest, shoulders or back of the body. It is normally painless and require no treatment.

## II. SYSTEM IMPLEMENTATION

### A. IMAGE ACQUISITION

The main purpose of this image acquisition module is to acquire the image and convert as Matrix format. Dataset collection of skin cancer images is stored in the database. This is the process known as image acquisition. The image acquisition process consists of three steps; energy reflected from the object of interest, an optical system which focuses the energy and finally a sensor which measures the amount of energy. The first stage of any vision system is the image acquisition stage. After the image has been obtained, various methods of processing can be applied to the image to perform the many different vision tasks required today. However, if the image has not been acquired satisfactorily then the intended tasks may not be achievable. Image acquisition in image processing can be broadly defined as the action of retrieving an image from some source, usually a hardware-based source, so it can be passed through whatever processes need to occur afterward. Performing image acquisition in image processing is always the first step in the workflow sequence because, without an image, no processing is possible. The image that is acquired is completely unprocessed and is the result of whatever hardware was used to generate it, which can be very important in some fields to have a consistent baseline from which to work. One of the ultimate goals of this process is to have a source of input that operates within such controlled and measured guidelines that the same image can, if necessary, be nearly perfectly reproduced under the same conditions so anomalous factors are easier to locate and eliminate

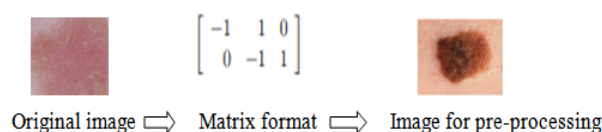


Fig.1 Image acquisition

# International Journal of Innovative Research in Computer and Communication Engineering

(A High Impact Factor, Monthly, Peer Reviewed Journal)

Website: [www.ijircce.com](http://www.ijircce.com)

Vol. 7, Issue 1, January 2019

## B. IMAGE PREPROCESSING

The main necessity of this image preprocessing module is to enhance image quality. Image pre-processing can significantly increase the reliability of an optical inspection. Several filter operations which intensify or reduce certain image details enable an easier or faster evaluation. The following are the examples of image pre-processing method Normalization, Edge filters, Soft focus, selective focus, User-specific filter, Static/dynamic Binarization, Image plane separation and Binning. This modules comprises many internal works include: Includes several functions for image processing, Contrast increase by static or dynamic Binarization, look-up tables or image plane separation, resolution reduction via binning and conversion of color images to gray value images. The most complex descriptor family is the polygon shape based descriptors, which potentially require several image pre-processing steps to isolate the polygon structure and shapes in the image for measurement. Polygon shape description pipelines may involve everything from image enhancements to structural morphology and segmentation techniques. Setting up the pre-processing for polygon feature shape extraction typically involves more work than any other method, since thresholds and segmentation require fine-tuning to achieve good results. Also note that polygon shape descriptors are not local patterns but, rather, larger regional structures with features spanning many teens and even hundreds of pixels, so the processing can be more intensive as well.

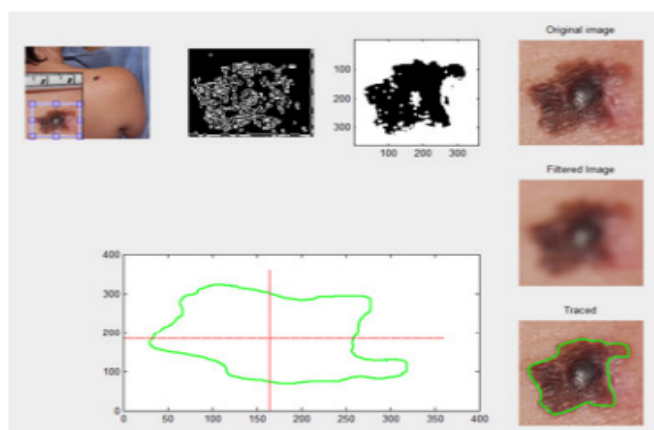


Fig.2 Image Preprocessing

## C. YUV Conversion

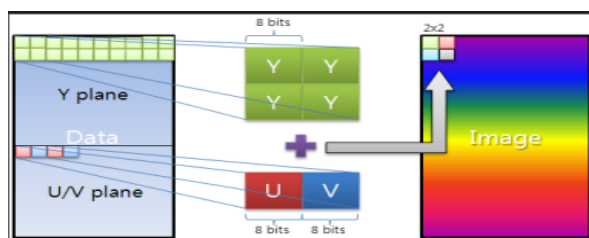


Fig.3 YUV conversion

Y'UV is computed from RGB as follows:

$$Y' = WRR + WGG + WBB = 0.299R + 0.587G + 0.114B,$$

$$B - Y'$$

$$U = U_{max} \cdot 1 - WB \sim 0.492 (B - Y'),$$

# International Journal of Innovative Research in Computer and Communication Engineering

(A High Impact Factor, Monthly, Peer Reviewed Journal)

Website: [www.ijircce.com](http://www.ijircce.com)

Vol. 7, Issue 1, January 2019

$$R-Y'V=V_{max} \quad 1-WR \sim 0.877 (R-Y')$$

The resulting ranges of Y', U, and V respectively are [0, 1], [-U<sub>max</sub>, U<sub>max</sub>], and [-V<sub>max</sub>, V<sub>max</sub>].

## D. NOISE REMOVAL- MEDIAN FILTER AND CONTRAST CORRECTION

Median filtering is similar to using an averaging filter, in that each output pixel is set to an average of the pixel values in the neighborhood of the corresponding input pixel. However, with median filtering, the value of an output pixel is determined by the median of the neighborhood pixels, rather than the mean. The median is much less sensitive than the mean to extreme values (called outliers). Median filtering is therefore better able to remove these outliers without reducing the sharpness of the image. Median Filter is a simple and powerful non-linear filter which is based order statistics. It is easy to implement method of smoothing images. Median filter is used for reducing the amount of intensity variation between one pixel and the other pixel. In this filter, do not replace the pixel value of image with the mean of all neighboring pixel values, replaces it with the median value.

The contrast correction algorithm analyzes and/or corrects the brightness and contrast of 8 and 24-bit images. The analysis and correction phases can be used separately or together. The Quality setting controls how finely the image is sampled, and will also impact how sensitive the adaptive correction method is to local changes in contrast.

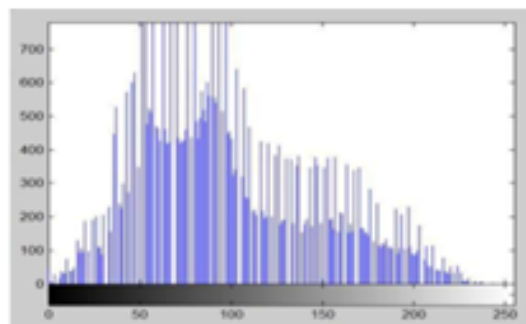
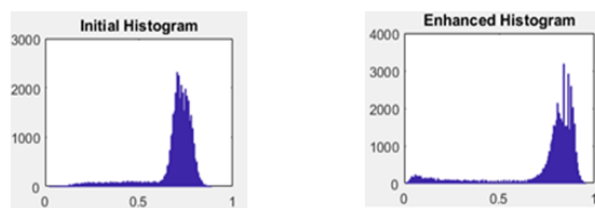


Fig. 4 Sample histogram image

## E. Histogram equalization

Histogram equalization is used to enhance contrast. It is not necessary that contrast will always be increase in this. There may be some cases were histogram equalization can be worse. In that cases the contrast is decreased. Let's start histogram equalization by taking this image below as a simple image.



(a) Initial image

(b) Enhanced image

Fig.5 Histogram equalization of images

# International Journal of Innovative Research in Computer and Communication Engineering

(A High Impact Factor, Monthly, Peer Reviewed Journal)

Website: [www.ijircce.com](http://www.ijircce.com)

Vol. 7, Issue 1, January 2019

## F. IMAGE BINARIZATION

Binarization is the process of converting a pixel image to a binary image. The main contribution of this module is to Convert the gray image into binary and remove the unwanted contents of skin. The images were firstly divided into normal and abnormal. Based on the fact that abnormal cases involve masses and micro calcifications. This procedure was performed four times repeatedly for each level of decomposition, from level 2 to level 5. For each level, features extracted using the reduction procedure were utilized. Binary images may contain numerous imperfections. In particular, the binary regions produced by simple thresholding are distorted by noise and texture. These techniques can be extended to grayscale images. The value of each pixel in the output image is based on a comparison of the corresponding pixel in the input image with its neighbors. By choosing the size and shape of the neighborhood, you can construct a morphological operation that is sensitive to specific shapes in the input image.

Binarization generally involves two steps including determination of a gray threshold according to some objective criteria and assigning each pixel to one class of background or foreground. If the pixels intensity is greater than the determined threshold then it belongs to foreground class and otherwise to the background. The main problem in binarization is the choice of thresholding technique. Several thresholding algorithms have been investigated and proposed to define the optimal threshold value. The thresholding algorithms can be categorized into six classes: histogram shape-based methods, clustering-based methods, entropybased methods, object attribute-based methods, the spatial methods and local methods based on the local characteristics of each pixel. Among these classes, many thresholding algorithms are based on a minimum variance. Otsu's thresholding technique is a classification-based method which searches for the the threshold that minimizes the intra-class variance. Otsu's thresholding method is used for automatic binarization level decision, based on the shape of the histogram and also used for skin cancer identification. Otsu's thresholding method involves iterating through all the possible threshold values and calculating a measure of spread for the pixel levels each side of the threshold, i.e. the pixels that either falls in foreground or background. The aim is to find the threshold value where the sum of foreground and background spreads is at its minimum.

## G. ROI SELECTION AND SEGMENTATION

Image preprocessing techniques are essential for discovering the noise removal, and quality improvement of the image. Preprocessing steps are very significant to focus the identification of abnormalities without unnecessary influence from background of the image. For this study, the first phase of preprocessing entailed two procedures; noise elimination and image contrast enhancement. The second phase involves segmentation, which is executed to remove the background area (high intensity rectangular label, tape artifact, and noise). The third deals with the application of phase reduction and global gray level thresholding to extract ROI. A major issue in such an application is the automated robust detection of a region (ROI) in which a strong signal can be expected (e.g., usually the forehead or the cheek). To reduce the effect of image noise and intensity variations due to skin's repetitive texture and hair, an image is first low-pass filtered before being segmented.



Fig.6 Segmentation of skin lesion

# International Journal of Innovative Research in Computer and Communication Engineering

(A High Impact Factor, Monthly, Peer Reviewed Journal)

Website: [www.ijircce.com](http://www.ijircce.com)

Vol. 7, Issue 1, January 2019

## H. WAVELET & SUB-BAND ANALYSIS

Wavelets are a mathematical tool for hierarchically decomposing functions in the frequency domain by preserving the spatial domain. This property can be exploited to segment objects in noisy images based on their frequency response in various frequency bands, separating them from the background and from other objects. Magnitude of wavelet coefficients measures the correlation between the image data and the wavelet functions. The results are four different set of transform coefficients. There are given below:

LL Sub band contains all wavelet coefficients those results from applying low pass filter to both rows and columns of an image.

HL Sub band consists of all wavelet coefficient results from low pass filtering of the rows, followed by high filtering of the columns.

LH Sub band consists of all wavelet coefficient results from high pass filtering of the rows, followed by low pass filtering of the columns, and mostly it Carries information about the vertical details or edges.

HH Sub band consists of all wavelet coefficient results from applying high pass filter to both rows by high and columns. This usually captures the diagonal edges or details of the original images.

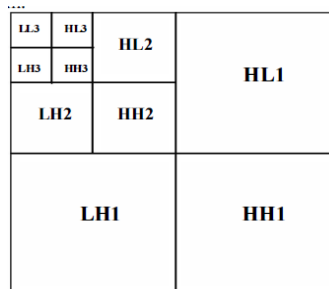


Fig.7 Sub-band decomposition

## I. K-MEANS CLUSTERING AND FEATURE EXTRACTION

K-means clustering is partitioning method. This method groups objects in the way that within-group variance is minimized. If within-group variance is minimized then it gives high featured segmented image. The working of this method is as follows:

- (a) Initialization of any two class centers randomly. These centers represent initial group centroids.
- (b) Calculate the value of histogram bin value distance between each image pixel and class centroids; assign each image pixel to its nearest class centroid.
- (c) Recalculate the new positions of centroids by calculating the mean histogram bin value of the same group.
- (d) If the value of centroids changes then repeat steps 2 and 3.

The main motto of this feature extraction module is to extract the important data's from the image. The function of feature extraction is to obtain new variables from the matrix of the image in order to create distinct classes. The feature extraction procedure involves the use of the wavelet decomposition process. These features are then classified in this stage.

Features extraction plays a very important role in the area of image processing. Before getting features, various image preprocessing techniques like binarization, thresholding, resizing, normalization etc. are applied on the sampled image. After that, feature extraction techniques are applied to get features that will be useful in classifying and recognition of images. Feature extraction techniques are helpful in various image processing applications e.g. character recognition. As features define the behavior of an image, they show its place in terms of storage taken, efficiency in classification and obviously in time consumption also. Here in this system, going to discuss various types of features, feature extraction techniques and explaining in what scenario, which features extraction technique, will be better.



# International Journal of Innovative Research in Computer and Communication Engineering

(A High Impact Factor, Monthly, Peer Reviewed Journal)

Website: [www.ijircce.com](http://www.ijircce.com)

Vol. 7, Issue 1, January 2019

## III. LITERATURE SURVEY

**Nilkamal S. Ramteke et al [10]** developed the skin cancer can be cured at very high rates with simple and economical treatments. For the benefit of human race, there is a need of diagnosis of skin cancer at an early stage and lots of researchers already working in that direction by means of hardware and software development using different techniques. In this regards, suppose to use images of cancer affected skin of patients frequently. So the basic aim of this project is to have a simple efficient and automatic skin cancer, detection and diagnosis system with the use of commonly available software for nonexperts/clinicians/doctors. The proposed scheme is using Wavelet Transformation for image improvement, denoising and Histogram Analysis. The malignant non-melanoma lesions are further divided into BCC and SCC is the most common type of skin cancer. The most common example of such cancer is a pink, pearly papule or plaque all sun-exposed skin. BCC can occur in fair complexion, chronic sun exposure and ionizing radiation. BCC can be seen on the human face, particularly the nose. BCC tends to grow slowly. SCC is second most common type, arises from the epidermal keratinocytes. The common example of SCC represents a scaly papule, plaque or nodule on sun-exposed skin. In addition to BCC, SCC can occur because of cigarette smoking. The skin of the head and neck are the most common location for SCC. SCC can grow rapidly and has an increased risk of metastasis, especially in chronically immune suppressed patients, such as organ transplant recipients. The limitation of this paper is texture features is not possible to classify images accurately.

**Karolina Beifus et al [3]** proposed the skin cells can be occurring from ultraviolet radiation combined with impairing ozone levels, uncritical sun exposure and use of tanning beds an increasing number of people are affected by different types of skin cancer using deep CNN. But preventive interventions like skin cancer screening are still missing the evidence for effectiveness and therefore are criticised. Fundamental for an appropriate course of action is to approach the defined parameters as measures for effectiveness critically. This research seeks to establish, through the available literature, the effects and conditions that prove the effectiveness of prevention strategies in skin cancer. Despite continually increasing incidences in skin cancer entities like malignant melanoma, BCC and SCC most people are still misunderstanding the hazard from UV radiation from sun or tanning beds. The use of sun beds has been identified as the most significant risk increasing factor of melanoma and non-melanoma skin cancer. The advantage of this paper is the cancer cells are identified easily and the limitation of this paper parameters are not defined accurately.

**Mahmoud Elgamal [5]** developed the rationale of the approach proposed here implies two steps. In the first step, signals are transformed into time-scale domain by DWT. In the second step features are extracted from the transformed data by a PCA. The continuous wavelet transform of a signal  $x(t)$  is defined as the sum over all time of the signal multiplied by wavelets  $\psi_{ab}(t)$ , the scaled (stretched or compressed) and shifted versions of the motherwavelet  $\psi(t)$ . The first level consists of LL, HL, LH, and HH coefficients. The HL coefficients correspond to high-pass in the horizontal direction and low-pass in the vertical direction. Thus, the HL coefficients follow horizontal edges more than vertical edges. The LH coefficients follow vertical edges because they correspond to high-pass in the vertical direction and low-pass in the horizontal direction. As a result, there are 4 sub-band (LL, LH, HH, HL) images at each scale. The sub-band LL is used for the next 2D DWT. The LL subband can be regarded as the approximation component of the image, while the LH, HL, and HH subbands can be regarded as the detailed components of the image. As the level of the decomposition increased, we obtained more compact yet coarser approximation components. Thus, wavelets provide a simple hierarchical framework for interpreting the image information. Histogram thresholding methods involve the determination of one or more histogram threshold values that separate the objects from the background. Clustering methods involve the partitioning of a color space into homogeneous regions using unsupervised clustering algorithms. The advantage of this paper is signal decomposition can be implemented in a computationally efficient manner via the fast wavelet transform, behind which the basic idea is to represent the wavelet basis as a set of high-pass and low-pass filters in a filter bank. The disadvantage of this paper is feature selection is not accurately possible in it.

# International Journal of Innovative Research in Computer and Communication Engineering

(A High Impact Factor, Monthly, Peer Reviewed Journal)

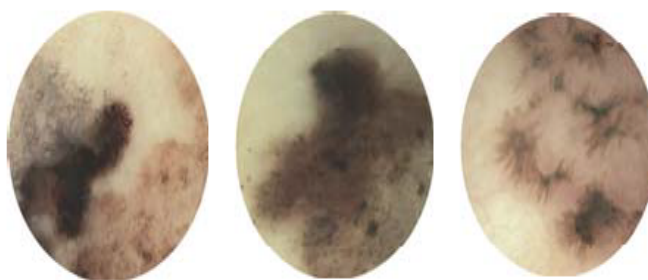
Website: [www.ijirccce.com](http://www.ijirccce.com)

Vol. 7, Issue 1, January 2019

## IV. SYSTEM ANALYSIS

### A. Existing System

Most of the existing literature regarding computer-assisted cell classification based on human skin has focused on feature extraction and classifier design on images that are either explicitly, or implicitly, assumed to contain a complete skin-lesion object. However, images may not always capture entire skin-lesions, as shown in following figure. Local features can be used to deal with the complex situations. Extracted local features from several image patches using wavelets and Gabor-like filters, then analyzed the responses using a bag-of-features BoF model to recognize features. In past systems, extracted texture and color features, then used a BoF model to code these features to classify skin-lesions. They then improved classification performance by imposing a color constancy constraint. The features were extracted from image patches, in order to better cope with incomplete skin-lesions. However, border features were ignored, which are important for skin-lesion diagnosis. Here proposed a dermoscopy disease classification model that aims to handle incomplete Skin-Cancer-Cell presentations.



**Fig.8 Incomplete skin cancer lesion**

The model utilizes a set of disease border features along with other disease-descriptive features, which are fed to a classical SVM meta-ensemble model that is trained to differentiate malignant skin-lesions from benign skin-lesions. Skin Cancer Classification is the leading cause of skin-related death in the United States. However, persons with early skin-disease classification have lower skin-disease Classification-related mortality than those with extensive disease, suggesting early detection and treatment of skin-disease classification might be beneficial. LDCT and CXR have been studied for early screening, with several new studies reporting results since the last review.

Activating mutations in the epidermal growth factor confer hypersensitivity to the tyrosine kinase inhibitors gefitinib and erlotinib in patients with advanced non-small-cell skin-disease classification. Also evaluated the feasibility of large-scale screening for epidermal growth factor mutations in such patients and analyzed the association between the mutations and the outcome of erlotinib treatment.

### DISADVANTAGES OF EXISTING SYSTEM

- Parameters are hard to interpret in the existing system.
- Hyperparameter tuning is non-trivial.
- The strategy is based on the research on mathematical features of code matrix, which ignores the fundamentals of classification, making it difficult to progress for ECOC SVMs and their applied research.

### B. Proposed System

In the proposed system, a Skin-Cancer-Cell classification model is introduced, that aims to handle incomplete Skin-Cancer-Cell presentations. This is achieved by using M-SVM. The model utilizes a set of Skin-Cancer-Cell border features along with other Skin-Cancer-Cell-descriptive features, which are fed to a modified-neural-network meta-ensemble model that is trained to differentiate malignant skin-lesions from benign skin-lesions. The preprocessing



# International Journal of Innovative Research in Computer and Communication Engineering

(A High Impact Factor, Monthly, Peer Reviewed Journal)

Website: [www.ijircce.com](http://www.ijircce.com)

Vol. 7, Issue 1, January 2019

stage involves techniques that include noise removal, enhancement and segmentation steps of the scanned images. The feature extraction stage entails five steps: wavelet decomposition, wavelet coefficient extraction, normalization, energy computation, and coefficient reduction. Computer programs or software created based on the human intellect can be used to aid doctors in decision making without conferring with specialists directly.

The software was not developed to substitute the specialist or doctor, but to aid in the diagnosis and prediction of patients condition from specific regulations or experience. Patients with high-risk factors or symptoms or predisposed to specific diseases or illness, could be selected to see a specialist for more treatment. Utilizing the technology particularly AI techniques in medical applications could lower the cost, time involved, human proficiency and medical inaccuracies. For all our proposed approach aims to provide the complete solution to the medical image processing strategy with the help skin-disease estimation and prediction scenarios.

The proposed system consists of five stages.

- (i) Image Acquisition
- (ii) Image Preprocessing
- (iii) Image Binarization
- (iv) ROI Selection and Segmentation
- (v) Feature Extraction

## ADVANTAGES OF PROPOSED SYSTEM

- (a) The M-SVM algorithm that directly solves a multi-class classification problem.
- (b) M-SVM approach can greatly speed-up the training process and achieve competitive or better classification accuracies.
- (c) M-SVM as a classifier has been used in cancer classification since the high throughput microarray gene expression data was available in the early 2000's.
- (d) To find a good solution to the problem of cancer classification using M-SVM.

## V. RESULTS AND DISCUSSION

In this section, we provided the simulated results of entire project with its practical proofs. The following figure illustrates the YUV conversion of the input image.



**Fig. 9 YUV Conversion**

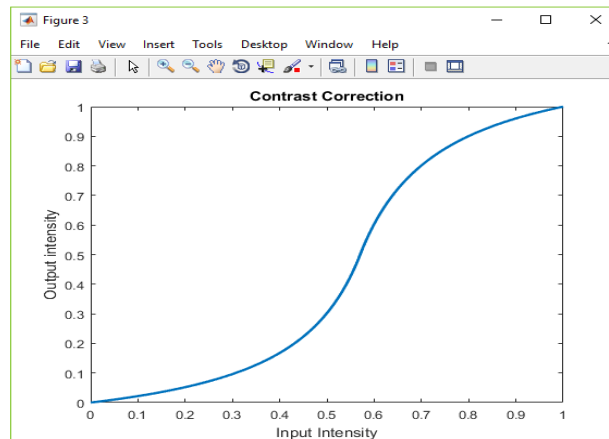
The following figure illustrates the Contrast Correction Graph view of the proposed system.

# International Journal of Innovative Research in Computer and Communication Engineering

(A High Impact Factor, Monthly, Peer Reviewed Journal)

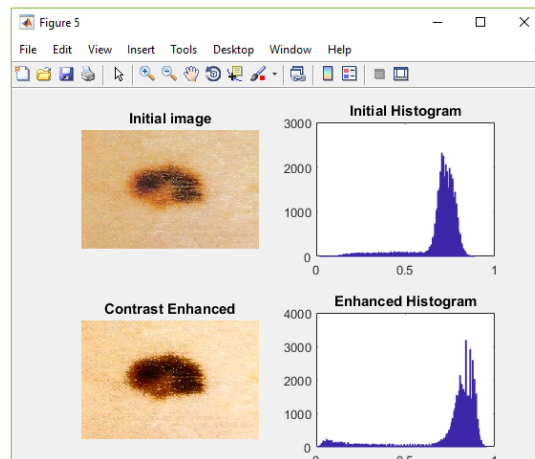
Website: [www.ijircce.com](http://www.ijircce.com)

Vol. 7, Issue 1, January 2019



**Fig.10 Contrast Correction**

The following figure illustrates the Histogram Equalization view of the proposed system.



**Fig.11 Histogram Equalization**

## VI. CONCLUSION AND FUTURE SCOPE

This project gives the brief knowledge on some image processing techniques and classification methods used in M-SVM. The proposed project work has designed an automated classifier system for classifying different skin diseases using M-SVM Classifier. Image segmentation is carried out using K-Means algorithm individually. First the DWT were applied on the images to get the feature vectors, as the dimensionality of the vectors quite large. Statistical and geometrical features are acquired high rate in the feature extraction. In this system, investigated a new quantitative image feature analysis approach using skin images and demonstrated new study results. It can be easily concluded that the proposed system of skin cancer detection can be implemented using and M-SVM to easily classify the type of skin cancer. Accuracy of proposed system is high compared to existing system. It is painless and timeless process than biopsy method. It is more advantageous to patients.

In future the proposed work is further enhanced by means of implementing a new classification strategy called MNN to improve the performance and accuracy level of the present system. For example in future work we can include MNN or



ISSN(Online): 2320-9801  
ISSN (Print) : 2320-9798

# International Journal of Innovative Research in Computer and Communication Engineering

*(A High Impact Factor, Monthly, Peer Reviewed Journal)*

Website: [www.ijircce.com](http://www.ijircce.com)

Vol. 7, Issue 1, January 2019

any other powerful classification techniques to improve the accuracy to 98% and above, so that it would be helpful for medication field as well as patient end.

## REFERENCES

- [1] Sudha J, Ishwarya M. (2018). A survey on cancer classification using soft computing techniques. International Journal of Research and Analytical Reviews. (823-827).
- [2] Ahmed, K., Jesmin, T., & Rahman, M. Z. (2013). Early prevention and detection of skin cancer risk using data mining. International Journal of Computer Applications, 62(4).
- [3] Beifus, K., Breitbart, E., & Köberlein-Neu, J. (2017). Effects of complex interventions in 'skin cancer prevention and treatment': protocol for a mixed-method systematic review with qualitative comparative analysis. BMJ open, 7(9).
- [4] Choudhury, T., Kumar, V., & Nigam, D. (2014). An Innovative Smart Soft Computing Methodology towards Disease. International Journal of Computer Science and Mobile Computing, 3(4), 368-388.
- [5] Elgamel, M. (2013). Automatic skin cancer images classification. (IJACSA) International Journal of Advanced Computer Science and Applications, 4(3), 287-294.
- [6] Esteva, A., Kuprel, B., Novoa, R. A., Ko, J., Swetter, S. M., Blau, H. M., & Thrun, S. (2017). Dermatologist-level classification of skin cancer with deep neural networks. Nature, 542(7639), 115.
- [7] Jaleel, J. A., Salim, S., & Aswin, R. B. (2013, March). Computer aided detection of skin cancer. In Circuits, Power and Computing Technologies (ICCPCT), 2013 International Conference on (pp. 1137-1142). IEEE.
- [8] Maurya R, Surya K.S, "GLCM and Multi Class Support Vector Machine based Automated Skin Cancer Classification", "IEEE journal, vol 12, 2014.
- [9] Mengistu, A. D., & Alemayehu, D. M. (2015). Computer Vision for Skin Cancer Diagnosis and Recognition using RBF and SOM. International Journal of Image Processing (IJIP), 9(6), 311-319.
- [10] Ramteke, N. S., & Jain, S. V. (2013). Analysis of Skin Cancer Using Fuzzy and Wavelet Technique-Review & Proposed New Algorithm. International Journal of Engineering Trends and Technology (IJETT), 4(6), 2555-2566.
- [11] Santosh Achakanalli & G. Sadashivappa, "Statistical Analysis Of Skin Cancer Image -A Case Study", International Journal of Electronics and Communication Engineering (IJECE), Vol. 3, Issue 3, May 2014.
- [12] Sheha, M. A., Mabrouk, M. S., & Sharawy, A. (2012). Automatic detection of melanoma skin cancer using texture analysis. International Journal of Computer Applications, 42(20), 22-26.
- [13] Shipra Khedika and Uma Yadav.(2017). Identification of Disease by Using SVM Classifier. Volume 7, Issue 4.
- [14] Singh, S., & Bansal, D. (2015). Biomedical Image Mining in Detection of Skin Cancer Disease. International Journal of Research and Engineering, 2(8), 13-16.
- [15] Uzma Bano Ansari & Tanuja Sarode .(2017). Skin Cancer Detection Using Image Processing. IRJET, e-ISSN: 2395 -0056 Volume: 04 Issue: 04.
- [16] Wang, H., Zheng, B., Yoon, S. W., & Ko, H. S. (2018). A support vector machine-based ensemble algorithm for breast cancer diagnosis. European Journal of Operational Research, 267(2), 687-699.