



ISSN(Online): 2320-9801  
ISSN (Print): 2320-9798

# International Journal of Innovative Research in Computer and Communication Engineering

(An ISO 3297: 2007 Certified Organization)

Vol. 4, Issue 11, November 2016

## Portable Camera Based Identification System for Visually Impaired People

Chenthamil Roja.R<sup>1</sup>, Rekha.N<sup>2</sup>, Poovizhi.P<sup>3</sup>,

P.G Student, Dept. of Communication Systems (ECE), Idhaya Engineering College for Women, Chinnasalem, India.<sup>1</sup>

P.G Student, Dept. of Communication Systems (ECE), Idhaya Engineering College for Women, Chinnasalem, India.<sup>2</sup>

Assistant Professor, Dept. of Electronics and Communication Engineering, Idhaya Engineering College  
for Women, Chinnasalem, India.<sup>3</sup>

**ABSTRACT:** In this paper, we present a reformative work for developing an assistive aid system for visually impaired people. This device act as an identification system and text navigator that are capable of assist or guide people with vision loss, ranging from partially sighted to totally blind, by means of sound commands. This device involves the sequential operations of color identification, currency denomination recognition, obstacle detection in indoor as well as reading newspapers and books. Here the text navigator device and identification systems are integrated into the single chip which is represented as Raspberry pi ARM11 (BCM2836). This Raspberry pi has 900MHz of high speed and accuracy. The text navigator system is used to captures an alphabetic and numeric letters by using a camera module as an image object and convert to text file using OCR(Optical Character Recognition) engine then convey that text file information using the speaker. This identification system and text-to-speech converter (Text navigator system) are specifically designed for visually impaired (VI) people, So that they can easily use this device without having to ask for help to others.

**KEYWORDS:** OCR, Raspberry pi, Text navigator system (TNS), Identification System (IS).

### I. INTRODUCTION

Low vision and blindness is the one of the disorder in the human body it causes lacking visual observation due to neurological and physiological factors of health. Taking care and guiding of visually impaired people and giving pedestrian secure mobility is one of the biggest problems faced by their family members in daily life and the visually impaired people always need the help of others. According to the WHO factor 285 million people are calculated to be visually impaired worldwide, from that 39 million are blind and 246 million have low vision. This identification system provides a low cost aid to help the visually impaired people. The paper is explained as follows, Section II describes about the related work for document analysis, text block extraction, portable devices and other visual aid modules. Section III describes limitations and existing system. Section IV representing the proposed assistive aid text navigator system, identification system and various modules present in it. Section V represents the result and discussions about the entire system. Then the Section VI exits the paper with conclusion of the entire system.

### II. RELATED WORK

In Chia Yi [7] presents the concept of a camera-based assistive system for visually impaired or blind persons to read text from signage and objects that are held in the hand. The system is able to read text from complex backgrounds and then communicate this information aurally to the visually impaired people. Rushikesh Dhananjay I made [9] Using the concept of resort to audio feedback to access information on electronic devices like smart phones running on Android OS. However, this modality is not always an appropriate form of output. This approaches that allow for private and obscure interaction are hegemonic. The Eye ring technology is the finger-worn device that allows using a pointing gesture. It opens up a world of possibilities for solving day-to-day problems for the visually impaired and the sighted alike. D.Koubaroulis [13] used the multimodal neighborhood signature (MNS) algorithm represents local object

# International Journal of Innovative Research in Computer and Communication Engineering

(An ISO 3297: 2007 Certified Organization)

Vol. 4, Issue 11, November 2016

appearance by stable color-based invariants efficiently computed from image neighborhoods with multimodal color density function. This kind of system helps the visually impaired people to the color based image retrieval.

## II.EXISTING SYSTEM

In existing approaches only color identification module used to identifies the colored object then it is conveyed as audio message to visually impaired people. Then the text block extractor, currency recognition module and obstacle detection modules are separately available in markets. The main drawback of existing approaches is difficult to carrying different modules with them. Then it has the high complexity to managing the modules.

## III.PROPOSED ASSISTIVE AID SYSTEM

In this paper, the text navigator system (TNS) and identification systems (IS) are overcomes the following problems faced by the visually impaired people. Braille language is used by the blind people for reading purposes but there is a lack of access to reading resources because of unavailability of reading materials. So the text navigator system (TNS) is used for reading newspaper or books. Then the color identification system (CIS) is used for concept of colors of objects present around the user. The currency denomination and recognition module (CDRM) is used to avoid the restrictions in identifying various currency notes while making payments and also used to identify the fake notes. And the obstacle detection system (ODS) is used in avoiding obstacles present in path while walking indoors. This systems are integrated into the raspberry pi ARM11(BCM 2386) which is shown in figure1.



Figure 1: Raspberry pi ARM11 (BCM2836)

*Description about Raspberry pi board:* The Raspberry Pi 2 delivers 6 times the processing capacity of previous models. This second generation Raspberry Pi has an upgraded Broadcom BCM2836 processor, which is a powerful ARM Cortex-A7 based quad-core processor that runs at 900MHz. The board also features an increase in memory capacity to 1Gbyte.

### A. SOFTWARE AND HARDWARE DESCRIPTIONS

To implement text navigator system (TNS) and identification system (IS) designs, a platform has been selected which includes the

*Software:* OS (Linux), compiler (arm-linux-gcc\_4.4.6), Language (opencv,c).these are the software requirements of the proposed assistive aid system.

*Hardware:* ARM11(BCM2836),speaker,PC, USB camera, Ultrasonic sensor.

# International Journal of Innovative Research in Computer and Communication Engineering

(An ISO 3297: 2007 Certified Organization)

Vol. 4, Issue 11, November 2016

The block diagram that shows various parts integrated to implement the proposed assistive aid system for visually impaired people, which is shown in figure 2.

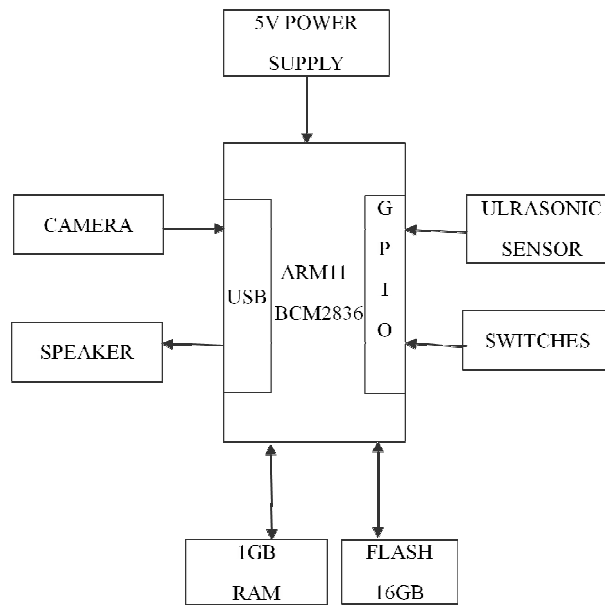


Figure 2: Block diagram of proposed assistive aid

## B. COLOR IDENTIFICATION SYSTEM (CIS)

An Image is a matrix of pixels; an image structure has various details of the image like size, channels, origin etc. Each and every pixel is itself a matrix holding basic information like color, depth, saturation etc. Here a colored image of 4 channels (RED, GREEN, YELLOW and BLUE). So each pixel has a RED value, GREEN and BLUE value. Our aim is to retrieve these values from an image to determine the color of the pixel. When the CIS switch is turned on in the raspberry it will starts to search the colored object by the camera then it undergoes the operation of scalar image and canny edge detection then the color is identified after that the color of the object is aurally conveyed to the visually impaired.

A pixel at (x,y) is a vector in the color space, the RGB color space is defined as,

$$c(x,y) = \begin{bmatrix} R(x,y) \\ G(x,y) \\ B(x,y) \end{bmatrix}$$

Flow chart for the color identification system is shown in figure 3

# International Journal of Innovative Research in Computer and Communication Engineering

(An ISO 3297: 2007 Certified Organization)

Vol. 4, Issue 11, November 2016

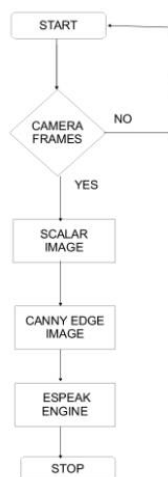


Figure 3: Flow chart for color identification system

## C. TEXT NAVIGATOR SYSTEM (TNS)

A text to speech (TTS) synthesizer is a computer based system that can read text aloud automatically, regardless of whether the text is introduced by a computer input stream or a scanned input submitted to an Optical character recognition (OCR) engine. A speech synthesizer can be implemented by both hardware and software. Speech is often based on concatenation of natural speech i.e. units that are taken from natural speech put together to form a word or sentence. Text navigator system is shown in above figure 4.

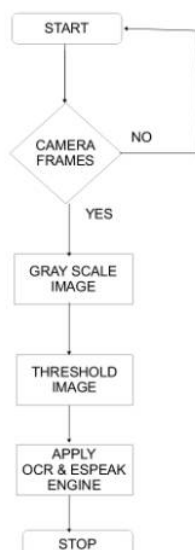


Figure 4: Flow chart for Text reading

The text navigator system is used to capturing the photograph of a document or book, then the noise available in the scanned object is removed at pre-processing and appropriate filters such as min-max filter, Gaussian blur effect etc. Generally grey image is the combination 0s and 1s and the binary image is the combination of 0s or 1s. The positive values above the threshold level are taken as 1s and the background with negative values are taken as 0s. Once the image is being loaded, we can convert it into gray scale image. The image which we get is now in the form of pixels

# International Journal of Innovative Research in Computer and Communication Engineering

(An ISO 3297: 2007 Certified Organization)

Vol. 4, Issue 11, November 2016

within a specific range. This range is used to determine the letters. Then the gray scale image is converted as threshold image it will be undergone the process of optical character recognition. Finally the content of the text is conveyed to the visually impaired.

## V.RESULTS AND DISCUSSIONS

Color identification system (CIS) is tested more than 5000 times to find out the accuracy of the module, example software implementation is shown in figure5, and its accuracy representation is shown in table1.This system providing the 92.25%of positive output identification. The color identification and obstacle detection modules are the external sensors and they may provide a slight changes in accuracy while detection.

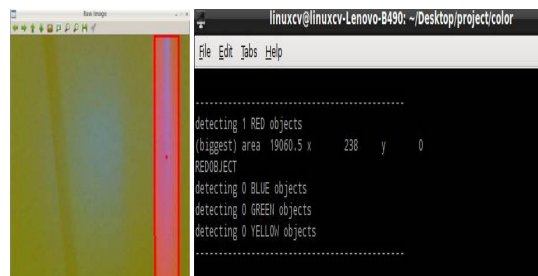


Figure 5:Software implementation to the color identification module (RED)

COLOR	ACCURACY
RED	100%
GREEN	89%
BLUE	92%
YELLOW	100%

Table 1: Accuracy of identified colors

In text navigator system (TNS) the text block extraction is used to reading the books or newspaper. The text navigator system captures the picture of the book and based on its thresholding value the letter present in the image is identified. This system is only suitable for black and white colors. If pixel value is greater than a threshold value, it is assigned one value (may be white), else it is assigned another value (may be black). The function used is cv2.threshold. First argument is the source image, which should be a grayscale image. Second argument is the threshold value which is used to classify the pixel values. Third argument is the maxVal which represents the value to be given if pixel value is more than (sometimes less than) the threshold value. OpenCV provides different styles of thresholding and it is decided by the fourth parameter of the function.

The simplest approach to segment an image is using thresholding.

$$f(x, y) > T \text{ then } f(x, y) = 0 \text{ else } f(x, y) = 255$$

The captured image and its thresholding values are shown in below figure 6.



# International Journal of Innovative Research in Computer and Communication Engineering

(An ISO 3297: 2007 Certified Organization)

Vol. 4, Issue 11, November 2016

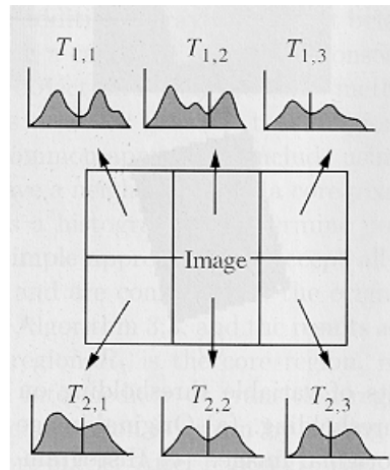


Figure 6: Captured text image and its thresholding value

## VI. CONCLUSION

The proposed assistive aid system is a simple, cheap, configurable and easy to handle electronic guidance for blind and visually impaired persons. This system helps to read the text and converts it into an audio format, and it also performs the various tasks such as color identification. In our phase 2 enhancements we will include the obstacle detection module, currency denomination and recognition module to the above modules. With the proposed assistive aid architecture, if constructed with at more accuracy and efficiency, the blind will be able to move from one place to another without others help.

## REFERENCES

- [1] S. Rahman, P. Banik, and S. Naha. LDA based paper currency recognition system using edge histogram descriptor In Computer and Information Technology (ICCIT), 2014 17th International Conference on, pages 326–331, 2014.
- [2] Kavya B R, Devendran B, Indian currency detection and denomination using SIFT, International Journal of Science, Engineering and Technology Research (IJSETR), Volume 4, June 2015.
- [3] J. Mriganka Gogoi, Syed Ejaz Ali, Subra Mukherjee, Automatic Indian Currency Denomination Recognition System based on Artificial Neural Network 2015 2nd International Conference on Signal Processing and Integrated Networks (SPIN).
- [4] Shraga Shovel, Iwan Ulrich, and Johann Borenstien, "NavBelt and the Guide Cane", IEEE Transactions on Robotics & Automation, Vol.10, No.1, pp. 9-20, March 2003.
- [5] Z. Hunaiti, V. Garaj, W. Balachandran and F. Cecelja, "Mobile Link Assessment for Visually Impaired Navigation System," 2005 IEEE Instrumentation and Measurement Technology Conference Proceedings, Ottawa, Ont., 2005, pp. 883-887.
- [6] P. Norvig. "How to Write a Spelling Corrector". USA : Google Inc. Available : <http://norvig.com/spell-correct.html>.
- [7] Assistive Text Reading from Complex Background for Blind Persons Chucai, Yingli Tian NIH presented at Grant 1R21EY020990, NSF Grant IIS-0957016, and ARO Grant W911NF-09-1-0565.
- [8] Pen with scanner. 2016. Available from: <http://www.prv.se/en/patents/why-apply-for-a-patent/examples-of-patents/pen-with-scanner>
- [9] eyering: the motivation for visually impaired people 1 rushikesh dhananjay imade, 2 akshay sadashiv bhoite international journal of advanced computing and electronics technology (ijacet) issn(print):2394-3408, (online):2394-3416, volume-2, issue-1, 2015
- [10] Rajendran V, Bharadwaja Kumar G. Text for developing unrestricted tamil text to speech synthesis system. Indian Journal of Science and Technology. 2015 Nov; 8(29):1–10.
- [11] Jyothi J, Manjusha K, Anandkumar M, Soman KP. Innovative feature set for machine learning based Telugu character recognition. Indian Journal of Science and Technology. 2015 Sep; 8(24):1–7.
- [12] Binary Images. 2016. Available from: [http://homepages.inf.ed.ac.uk/rbf/CVonline/local\\_copies/owens/lect2/node3.html](http://homepages.inf.ed.ac.uk/rbf/CVonline/local_copies/owens/lect2/node3.html)
- [13] Colour-based Image Retrieval from Video Sequences D. Koubaroulis J. Matas J. Kittler Challenge of Image Retrieval, Brighton, 2000
- [14] S. J. Mason, E. G. Legge and C. S. Kallie. Variability in the length and frequency of steps of sighted and visually impaired walkers. In Journal of visual impairment & blindness, pages 741, 2005.
- [15] D. G. Lowe Object recognition from local scale-invariant features. In Computer vision, 1999. The proceedings of the seventh IEEE international conference on, pages 1150–1157, 1999.