



ISSN(Online): 2320-9801  
ISSN (Print): 2320-9798

# International Journal of Innovative Research in Computer and Communication Engineering

(An ISO 3297: 2007 Certified Organization)

Website: [www.ijirce.com](http://www.ijirce.com)

Vol. 5, Issue 5, May 2017

## Survey on Learning Human Emotions from Body Gestures during Social Human–Robot Interactions

Diksha A. Shende, Dr. R. S. Kawitkar

Department of E & TC, Sinhgad College of Engineering, Pune, Maharashtra, India

**ABSTRACT:** Human–robot interaction is known as the study of interactions between humans and robots. The social robots are accepted in a society when they are effectively incorporated and acknowledged inside society, they should have the capacity to decipher human expressive gestures that are shown through regular methods of correspondence. The main challenge in human robot interaction is that design the perfect robot having a person states i.e attitude, moods, happiness emotions. To retrieve these things are very difficult so in this paper we are inventing a new technique i.e accessibility aware social robot ready to self-sufficiently decide a man's level of availability (affinity, openness) around the robot based on person's natural body language and gesture. Specifically, it show two one-on-one HRI investigations to: 1) decide the execution of our robotized framework in having the capacity to perceive and characterize a man's accessibility levels and 2) research how individuals interface with an accessibility mindful robot which decides its own practices in view of a man's discourse and accessibility levels.

**KEYWORDS:** HRI, body language, social robot.

### I. INTRODUCTION

The Human–robot interaction is the investigation of cooperation's amongst people and robots. These three laws of mechanical autonomy decide the possibility of safe connection. The nearer the human and the robot get and the more complicated the relationship turns into, the more the danger of a person harmed rises. These days in cutting edge social orders, makers utilizing robots illuminate this issue by not giving people and robots a chance to share the workspace whenever. This is accomplished by characterizing safe zones utilizing LiDAR sensors or physical confines. In this way the nearness of people is totally taboo in the robot workspace while it is working. With the advances of computerized reasoning, the independent robots could in the long run have more proactive practices, arranging their movement in complex obscure situations. These new capacities keep wellbeing as the essential issue and productivity as auxiliary. To permit this new era of robot, research is being led on human recognition, movement arranging, scene remaking, keen conduct through undertaking arranging and agreeable conduct utilizing power control. The objective of HRI research is to characterize models of people's assumptions with respect to robot communication to guide robot outline and algorithmic advancement that would permit more characteristic and powerful collaboration amongst people and robots. Examine ranges from how people function with remote, tele-worked unmanned vehicles to shared coordinated effort with human robots. Human–robot interaction (HRI) includes examining the outline and execution of robots which are utilized by or work nearby people. These robots cooperate through different types of correspondence in various true situations. In particular, HRI envelops both physical and social connections with a robot in an expansive scope of uses, including intellectual restoration, teleportation of uninhabited air vehicles, inquiry and safeguard, prosthetics, and synergistic control assignments. Our own particular research in this field is focused on the advancement of human-like social robots with the social functionalities and behavioral standards required to draw in people in characteristic assistive communications, for example, giving: 1) updates; 2) wellbeing checking; and 3) subjective preparing and social mediations. All together for these robots to effectively share in social HRI, they should have the capacity to perceive human meaningful gestures. This can be accomplished by seeing and translating the



# International Journal of Innovative Research in Computer and Communication Engineering

(An ISO 3297: 2007 Certified Organization)

Website: [www.ijircce.com](http://www.ijircce.com)

Vol. 5, Issue 5, May 2017

normal correspondence methods of a human, for example, non-verbal communication, paralanguage, discourse and outward appearances. Our own particular research around there spotlights on the improvement of a computerized influence from static non-verbal communication characterization framework to be utilized amid social HRI. One primary preferred standpoint to utilizing static non-verbal communication is that a man for the most part shows these unknowingly and unexpectedly, and thusly, they are normal and not constrained.

## A. MOTIVATION

Human-robot interaction is the study of interactions between humans and robots, which is the rapidly growing topic everywhere,

- Multimodal sensing and perception
- Design and human factors.
- Developmental robotics.
- Social, service, and assistive robotics.
- Educational robotics.

## B. OBJECTIVE

The objectives of the proposed systems are listed below

- Determine the performance of our automated system in being able to recognize and classify a person's accessibility levels.
- Investigate how people interact with an accessibility-aware robot which determines its own behaviors based on a person's speech and accessibility levels.

## III. LITERATURE SURVEY

A) H. I. Son et al., "Human-centered design and evaluation of haptic cueing for teleoperation of multiple mobile robots," IEEE Trans. Cybern., vol. 43, no. 2, pp. 597-609, Apr. 2013. In this paper, introduced a structure that backings the transmission of haptic prompts from the controlled UAVs to the tele administrator's controller. Haptic signals can be intended to build the teleoperator's moving execution of the UAVs and impression of the remote environment. For this reason, this proposed three conceivable sorts of haptic signals and three reciprocal teleoperation controllers in view of surely understood routine teleoperation control. These three plans depended on the accompanying: 1) the UAVs' deterrent evasion constrain; 2) the UAVs' speed data; and 3) a mix of the two.

B) B. Doroodgar, Y. Liu, and G. Nejat, "A learning-based semi-autonomous controller for robotic exploration of unknown disaster scenes while searching for victims," IEEE Trans. Cybern., vol. 44, no. 12, pp. 2719-2732, Dec. 2014.

In this paper, a novel MAXQ HRL-based semi-self-sufficient control engineering was displayed for automated investigation of obscure and jumbled USAR situations. The controller's goal is to give a safeguard robot the capacity to gain from its past encounters so as to enhance its execution in exploring and investigating a calamity scene to discover however many casualties as could reasonably be expected. This permits a human administrator to profit by the robot's capacity to persistently gain from its environment and adjust to more mind boggling situations.

C) W. Sheng, A. Thobbi, and Y. Gu, "An integrated framework for human-robot collaborative manipulation," IEEE Trans. Cybern., vol. 45, no. 10, pp. 2030-2041, Oct. 2015. This paper contributes a coordinated system for leading human-robot community oriented control errands. We built up a two-stage learning structure, which joins impersonation learning and support learning. Utilizing impersonation taking in the robot could connect and hold the finish of the table. Through support taking in, the robot can figure out how to team up with human for the table-lifting undertaking. With the guided investigation system for Q-taking in, the learning velocity is made strides. Utilizing the whole structure, the robot could figure out how to play out the collective table-lifting errand rapidly and effectively.

D) S. Gong, P. W. McOwan, and C. Shan, "Beyond facial expressions: Learning human emotion from body gestures," in Proc. British Mach. Vis. Conf., Warwick, U.K., 2007, pp. 1-10. In this paper, explore full of feeling body signal investigation in recordings, a generally understudied issue. Spatial-fleeting components are abused for demonstrating of



# International Journal of Innovative Research in Computer and Communication Engineering

(An ISO 3297: 2007 Certified Organization)

Website: [www.ijircce.com](http://www.ijircce.com)

Vol. 5, Issue 5, May 2017

body motions. Additionally present to breaker outward appearance and body signal at the element level utilizing Canonical Correlation Analysis. The current spatial-worldly components based video depiction does not consider the position relations of cuboids identified. By including the relative position data between the cuboid sorts, the representation will be substantially more discriminative. This will be contemplated in our future work

E) M. Song, D. Tao, Z. Liu, X. Li, and M. C. Zhou, "Image ratio features for facial expression recognition application," IEEE Trans. Syst., Man, Cybern. B, Cybern., vol. 40, no. 3, pp. 779–788, Jun. 2010. In this paper, proposed picture proportion highlights for outward appearance acknowledgment. Picture proportion highlights viably catch picture force changes because of skin disfigurements. Contrasted and the beforehand proposed high slope segment highlights, picture proportion elements are more strong to albedo and lighting varieties. Intensive test comes about have exhibited that picture proportion highlights altogether enhance outward appearance acknowledgment execution when there are vast lighting and albedo varieties. What's more, they have built up an expression acknowledgment framework that joins picture proportion highlights with FAPs. They have demonstrated that the blend of picture proportion components and FAPs outflanks every element alone, and the consolidated framework is successful at dealing with both symmetric and unbalanced outward appearances

## IV. PROPOSED SYSTEM

The proposed system of the HRI is given below

### A. Human body language recognition during HRI

1) **Emblems:** Gestures that have a direct verbal translation.

2) **Illustrators:** Movements that are directly tied to speech.

3) **Regulators:** Gestures that maintain and regulate a conversation, such as to tell a person to hurry up, repeat, continue, etc.

4) **Adaptors:** Body language that conveys emotions or performs bodily actions.

It is very difficult task to build up the robot.

In general, robots have yet to be developed that directly interpret adaptor style body language for identifying a person's affect during social interactions in order to determine their own expressive assistive behaviors. Since this sort of non-verbal communication is viewed as key in uncovering a man's feelings or dispositions, it would be helpful for a robot to see, decipher, and react to connectors while associating in social HRI to make all the more captivating collaborations. mean to create and incorporate a tactile framework that permits a social robot to viably perceive a man's full of feeling nonverbal practices amid continuous social HRI via independently distinguishing and sorting a man's connector style non-verbal communication. Using this tactile framework a robot will have the capacity to give errand help utilizing its own particular proper expressive practices in light of a client's full of feeling non-verbal communication. We will likely actualize a noncontact non-verbal communication ID and classification framework fit for deciding influence in view of a man's abdominal area dialect. Non-verbal communication is characterized, in this paper, as static body postures displayed by a person amid HRI. NISA is used to distinguish an individual's level of availability toward a robot in light of his/her non-verbal communication.

# International Journal of Innovative Research in Computer and Communication Engineering

(An ISO 3297: 2007 Certified Organization)

Website: [www.ijircce.com](http://www.ijircce.com)

Vol. 5, Issue 5, May 2017

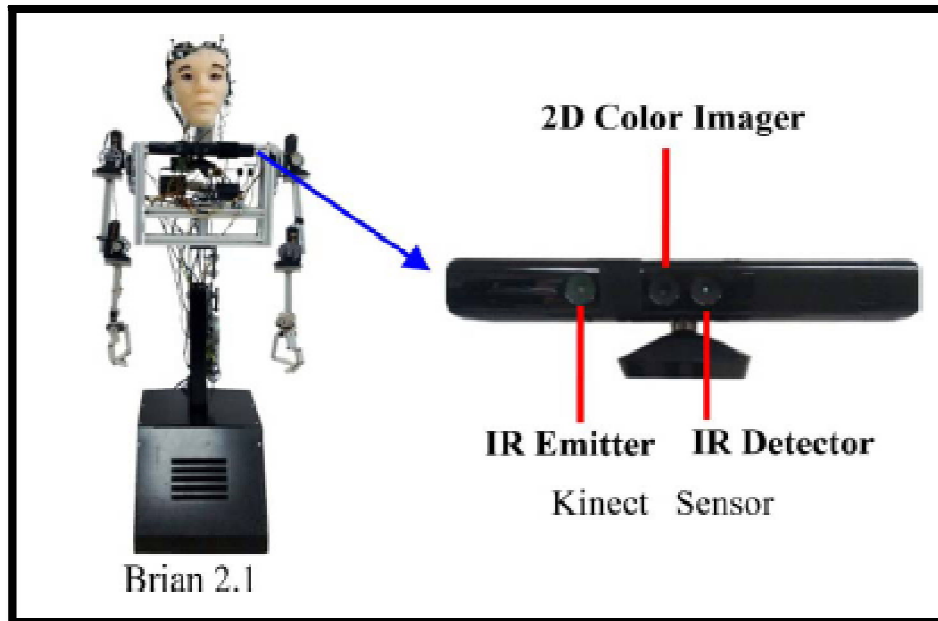


Fig. 1. Socially assistive robot Brian 2.1 and its Kinect sensor.

## B. automated accessibility from body language classification technique

The recognition of non-verbal communication is trying as there exists numerous designs in a high dimensionality look space. This task is made more troublesome when it is expected for a robot that participates progressively social HRI utilizing just locally available sensors. Thus, we depict our robotized availability acknowledgment and arrangement framework that distinguishes a man's static body postures using tangible data from the Kinect sensor. The proposed approach uses both a Kinect 2-D color picture, to recognize uncovered skin areas, and Kinect profundity information to create a 3-D ellipsoid model of a man's static pose.

### • Kinect Sensor

Initially our research is the first research which uses the application of the kinetic sensor for the human recognition. The reasonable Kinect sensor comprises of a 2-D CMOS shading camera and a profundity imager, both with resolutions of  $640 \times 480$  pixels. To get profundity data, an example of spots is anticipated onto a scene utilizing an IR light source and caught with a CMOS IR indicator. The profundity of a point in the scene is ascertained by measuring the even dislodging of a spot in the anticipated example. The working scope of the profundity sensor is around 0.5–4 m. The Kinect sensor was aligned for this paper using a 3-D checkerboard design comprising of the light squares raised regarding the dim squares. The sensor is consolidated onto the upper middle of Brian 2.1's stage to give tangible data to distinguishing a man's static body posture in a noncontact way (Fig. 1).

### • Human Static Body Poses

A person can show a different scope of static body postures amid association. These static postures contain data with respect to varieties in the individual's anxiety, affinity, inclusion, and emotional quality and power. The represents that are recognized in this paper are adjusted from the position openness size of the NISA. With the goal for NISA to view a stance as static, it must be held for no less than 4 s. Static body positions are a game plan of trunk introductions and inclines, and arm positions which we use to distinguish a man's availability level toward a robot.

### • Multimodal Static Body Pose Estimation Approach

2-D pictures and profundity information procured by the Kinect sensor are utilized by the human body extraction and body part division modules to first concentrate a man from the foundation and after that to recognize every particular body part. The body parts are utilized to recognize static body postures by means of the static stance ID module. The switch tree structure ellipsoid model module then decides the 3-D postures of each of the body parts in these static



# International Journal of Innovative Research in Computer and Communication Engineering

(An ISO 3297: 2007 Certified Organization)

Website: [www.ijircce.com](http://www.ijircce.com)

Vol. 5, Issue 5, May 2017

stances. Ultimately, the body posture estimation module decides the introductions and inclines of every static body posture.

## IV. ADVANTAGES

The advantages of the proposed system is given below

- Human-robot interaction (HRI) involves investigating the design and performance of robots which are used by or work alongside humans.
- Determine the performance of our automated system in being able to recognize and classify a person's accessibility levels.
- Interact to a greater extent with people who do not have disabilities.
- A robot may not injure a human being.
- A robot must protect its own existence.

## V. DISADVANTAGES

The disadvantages of the system is given below

- One main disadvantage that results from Humanoid Robots will be that many people are going to lose their jobs.
- Another disadvantage would be that this implementation of robots into people's lives will cause a shift in their social ability and willingness, in other words, people are going to become more introverted.

## VI APPLICATION

The application of the proposed algorithm is given below

- Entertainment
- Education
- Field robotics
- Home and companion robotics
- Hospitality
- Rehabilitation and Elder Care
- Robot Assisted Therapy (RAT)

## VII. CONCLUSION

The executed the initially automated static body language identification and categorization system for outlining an accessibility-aware robot that can reorganization and adjust its own behaviors to the accessibility levels of a person during one-on-one social HRI. The outcomes showed that the participants were more accessible toward an accessibility-aware robot over a no accessibility-aware robot, and saw the previous to be more socially smart. Generally, our outcomes show the potential of integrating an accessibility identification and categorization system into a social robot, allowing the robot to interpret, classify, and respond to adaptor style body language during social interactions.

## REFERENCES

- [1]M. A. Goodrich and A. C. Schultz, "Human-robot interaction," *Found. Trends Human Comput. Interact.* vol. 1, no. 3, pp. 203-275, 2007.
- [2]A. Tapus, C. Tapus, and M. J. Mataric, "Hands-off therapist robot behavior adaptation to user personality for post-stroke rehabilitation therapy," in *Proc. IEEE Int. Conf. Robot. Autom.*, Rome, Italy, 2007, pp. 1547-1553.
- [3]H. I. Son et al., "Human-centered design and evaluation of haptic cueing for teleoperation of multiple mobile robots," *IEEE Trans. Cybern.*, vol. 43, no. 2, pp. 597-609, Apr. 2013.
- [4]B. Doroodgar, Y. Liu, and G. Nejat, "A learning-based semi-autonomous controller for robotic exploration of unknown disaster scenes while searching for victims," *IEEE Trans. Cybern.*, vol. 44, no. 12, pp. 2719-2732, Dec. 2014.



ISSN(Online): 2320-9801  
ISSN (Print): 2320-9798

# International Journal of Innovative Research in Computer and Communication Engineering

(An ISO 3297: 2007 Certified Organization)

Website: [www.ijircce.com](http://www.ijircce.com)

Vol. 5, Issue 5, May 2017

- [5] R. Heliot, A. L. Orsborn, K. Ganguly, and J. M. Carmena, "System architecture for stiffness control in brain-machine interfaces," *IEEE Trans. Syst., Man, Cybern. A, Syst., Humans*, vol. 40, no. 4, pp. 732–742, Jul. 2010.
- [6] W. Sheng, A. Thobbi, and Y. Gu, "An integrated framework for human-robot collaborative manipulation," *IEEE Trans. Cybern.*, vol. 45, no. 10, pp. 2030–2041, Oct. 2015.
- [7] G. Nejat and M. Ficocelli, "Can I be of assistance? The intelligence behind an assistive robot," in *Proc. IEEE Int. Conf. Robot. Autom.*, Pasadena, CA, USA, 2008, pp. 3564–3569.
- [8] D. McColl and G. Nejat, "Meal-time with a socially assistive robot and older adults at a long-term care facility," *J. Human Robot Interact.*, vol. 2, no. 1, pp. 152–171, 2013.
- [9] W. G. Louie, D. McColl, and G. Nejat, "Playing a memory game with a socially assistive robot: A case study at a long-term care facility," in *Proc. IEEE Int. Symp. Robot Human Interact. Commun.*, Paris, France, 2012, pp. 345–350.
- [10] D. McColl, J. Chan, and G. Nejat, "A socially assistive robot for mealtime cognitive interventions," *J. Med. Devices Trans. ASME*, vol. 6, no. 1, 2012, Art. ID 017559.
- [11] S. Gong, P. W. McOwan, and C. Shan, "Beyond facial expressions: Learning human emotion from body gestures," in *Proc. British Mach. Vis. Conf.*, Warwick, U.K., 2007, pp. 1–10.
- [12] J. Sundberg, S. Patel, E. Bjorkner, and K. R. Scherer, "Interdependencies among voice source parameters in emotional speech," *IEEE Trans. Affect. Comput.*, vol. 2, no. 3, pp. 162–174, Jul./Sep. 2011.
- [13] M. Song, D. Tao, Z. Liu, X. Li, and M. C. Zhou, "Image ratio features for facial expression recognition application," *IEEE Trans. Syst., Man, Cybern. B, Cybern.*, vol. 40, no. 3, pp. 779–788, Jun. 2010.