



IJIRCCCE

e-ISSN: 2320-9801 | p-ISSN: 2320-9798



INTERNATIONAL JOURNAL OF INNOVATIVE RESEARCH

IN COMPUTER & COMMUNICATION ENGINEERING

Volume 11, Issue 4, April 2023

ISSN INTERNATIONAL
STANDARD
SERIAL
NUMBER
INDIA

Impact Factor: 8.379



9940 572 462



6381 907 438



ijircce@gmail.com



www.ijircce.com

Efficient and Eco-Friendly Farming: Humidity-Based Smart Irrigation and Pesticide Management with Worm Detection

Kaustubh Shinde, Rameshwar Dhore, Shreyas Kaldate, Pravin Kalyankar, Suraj Dudhabhate

Faculty of Computer Engineering, Sinhgad Institute of Technology and Science, Pune, India

Students, Department of Computer Engineering, Sinhgad Institute of Technology and Science, Pune, India

ABSTRACT: Nowadays smart irrigation is becoming increasingly popular to reduce water wastage and increase crop yield. The major problem of such systems is that they can only detect the moisture in the soil but they cannot detect the presence of worms in the crops. This paper proposes a smart irrigation system with worm detection to detect the moisture present in the soil that it detects the presence of worms in the crops using cameras and provides real-time feedback to the irrigation system. The system incorporates a machine-learning algorithm to detect worms and spray pesticides. The results demonstrate that the system can effectively detect the worms present on the crops and spray pesticides improving the crop yield.

KEYWORDS: Smart Irrigation, Worm Detection, Soil quality, Machine learning, IoT, R-CNN, Naive Bayes.

I. INTRODUCTION

The spread of farming practices globally has been prompted by the rising demand for food items, which is a crucial sector of the global economy. Traditional agricultural methods, however, frequently rely on ineffective water management and can damage the health of the soil, resulting in a decrease in crop production. A potential answer to these problems is the deployment of smart irrigation systems. In order to optimize water use and boost crop yield, these systems use IoT technology to monitor environmental factors, soil moisture levels, and plant development patterns, and components, incorporating the applicable criteria that follow.

1. Modernizing Agriculture

Utilizing IoT technology to optimize water use in agriculture, smart irrigation is a creative and environmentally responsible method of managing water resources. By keeping an eye on the weather, plant development patterns, and soil moisture levels, it seeks to decrease water waste and increase agricultural output. Worms present on crops are one of the major causes that reduce the amount of crop yield. The usage of worm identification as a component of a smart irrigation system has come to light in this area.

2. IoT and Smart Irrigation

Smart irrigation systems that use IoT technology offer real-time monitoring and control of water usage, helping farmers to effectively manage their water resources. These systems can also include other sensors, such as weather sensors, that offer useful information about the environment in addition to soil moisture sensors. Machine learning algorithms can be used to analyze this data in order to find patterns and adjust the watering plan accordingly.

Another example of how Internet of Things (IoT) technology can be utilized to enhance agricultural practices is the use of cameras for worm identification in smart irrigation systems. By examining the visual patterns of the soil and relaying this information to the irrigation system, in the same way, cameras may also identify the presence of worms. As a result, water waste is decreased and the irrigation schedule can be modified based on the soil's quality.

The integration of IoT technology and cameras for worm detection present on crops can also provide valuable insights into crop health. The data collected by the system can be used to spray pesticides which helps farmers make good decisions about water and spray pesticide management practices.

II. SYSTEM DESIGN

Sensors, cameras, an IoT platform, and a control system make up the four key parts of the system architecture of a smart irrigation system that uses cameras and IoT technologies to identify worms.

1. Sensors: The sensors are used to gather information on the temperature, humidity, and other external factors as well as the moisture content of the soil. These sensors can be positioned all over the farm and can wirelessly transfer data to the IoT platform.
2. Cameras: The usage of the cameras allows for the detection of worms in the soil. Wi-Fi or other wireless communication protocols can connect these cameras to the IoT platform.
3. IoT Platform: The data from the sensors and cameras are gathered and analyzed at the IoT platform's central hub. This platform, which can be on-site or cloud-based, uses machine learning algorithms to analyze the data and offer insights about the health of the soil, crops, and water use.
4. Control System (Raspberry Pi): The Raspberry Pi can be connected to several sensors, including a camera for worm identification, ambient sensors, and soil moisture sensors. The Raspberry Pi can be connected to these sensors and cameras via GPIO pins or additional interfaces like USB, I2C, or SPI. To find patterns and identify trends in soil moisture levels, environmental factors, and the presence of worms on the crops, machine learning algorithms can be applied to the data gathered. "Fig 2.1" demonstrates the architecture of Raspberry Pi.

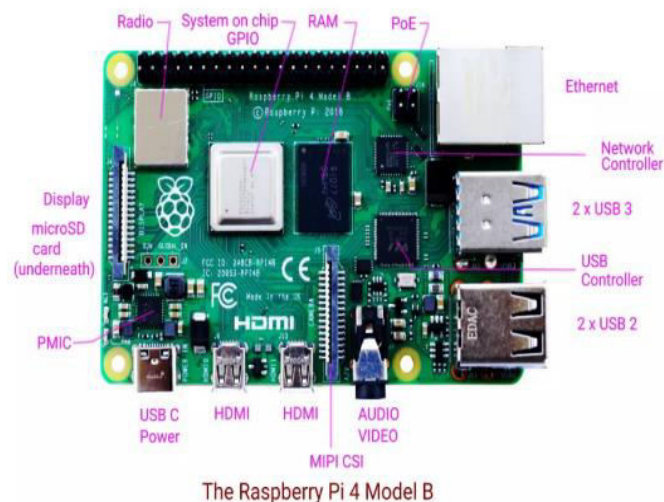


Fig 1.1 Raspberry Pi Model

II. MATHEMATICAL MODEL

Let S be the whole system $S = \{I,P,O\}$

I - input

P - procedure

O - output

Input(I)

Using sensor it will Detect humidity, soil moisture.

And by using R-CNN for images detection.

$I = \{\text{Dataset of Images}\}$

Procedure(P)

Detect Worm Present/Absent

$P = \{I, \text{Take data and apply R-CNN}\}$

1. if worms present,
 - i. Using Naive-Bayes Classifier,
 - ii. Detect the type of worm and notify to the farmer
2. else
Crop is healthy

Use Raspberry Pi for further Controls based on the decision of the algorithm

Output(O)

$O = \{\text{Smart Irrigation using raspberry pi}\}$

IV. SYSTEM ARCHITECTURE

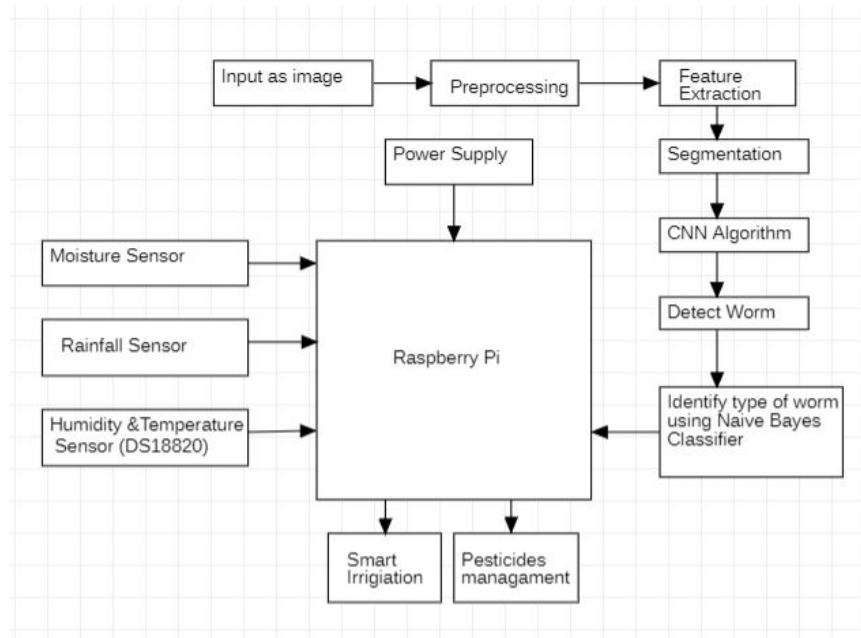


Fig 2.1 System Architecture

The system architecture is demonstrated in the ‘Fig 2.1’ .

Working

CNN-Based Worm Detection: Algorithms based on deep learning called convolutional neural networks (CNNs) can be utilized for picture recognition and classification applications. CNNs have demonstrated encouraging results in worm

identification as well as the detection of pests and illnesses in crops. Here is an overview of how CNNs can be used for worm detection on crops:

1. **Image Collection:** Crop images can be captured with cameras that have high-resolution cameras. To get a wide collection of shots, these pictures might be taken from different perspectives and distances.
2. **Data Preprocessing:** To feed the collected photos into the CNN model, the images must be preprocessed to standardize their sizes, color spaces, and orientation. Resizing, normalization, and color conversion are a few examples of image preprocessing.
3. **Training the Model:** The data is then separated into training, validation and test sets after being gathered and preprocessed. The validation set is used to improve the CNN model after it has been trained on the training data set. Until the model acquires adequate accuracy the same process is repeated.
4. **Worm Detection:** Once the CNN model is trained, it can be used to detect the presence of worms in crops. It can classify images into two classes - crops with worms and crops without worms using R-CNN. The type of worm will get detected using Naive-Bayes Classifier model
5. **Integration with Smart Irrigation:** A smart irrigation system can use the output of the R-CNN model to change the irrigation schedule, and pesticide spraying schedule based on the type of worms. The detected worm information will be sent to the farmer and he will choose the related pesticide. To maintain ideal soil moisture levels, the system can alter water usage such that it is increased in areas with worms and decreased in areas with healthy crops. In conclusion, farmers may have access to a potent tool for pest control through the application of CNNs for worm identification on crops. Utilizing CNNs in conjunction with intelligent irrigation systems can increase crop output, decrease the need for toxic pesticides, and optimize water use, making agriculture more productive and sustainable.

IV. CONCLUSION

Smart irrigation and pest management using worm detection will solve one of the major problems of the farmers and modernize the agriculture field and will save time as well as water and human power require to manually check the worms present on the crops and schedule the pesticide spraying accordingly. It will automate the process of detecting worms present on the crops and spray the pesticides automatically using IoT. A proactive approach to crop management and the identification of trends and patterns in the field are also made possible using data analysis techniques. Farmers can optimize their operations and boost output while lowering costs and environmental impact by utilizing technology in this way.

REFERENCES

- [1].Basavaraj Anami, Suvama Nandyal, and Govardhan, "A Combined Color, Texture and Edge feature Based Approach for Identification and Classification of Indian Medicinal Plants," International Journal of Computer Applications, vol. 6, September 2010.M. Young, The echnical Writer's Handbook. Mill Valley, CA: University Science, 1989.
- [2].Kue-Bum Lee, and Kwang-Seok Hong, "An Implementation of Leaf Recognition System using Leaf Vein and Shape," International Journal of Bio-Science and Bio-Technology, vol. 5, No. 2, April 2013.
- [3].Senthil Kumar, and Gopalakrishnan, "Embedded image capturing system using Raspberry Pi system," International journal o f emerging trends and technology in computer science, vol. 3, Issue. 2, April 2014.K. Elissa, "Title of paper if known," unpublished.
- [4].Mila Nikolova, and Gabriele Steidl, "Fast Hue and Range Preserving Histogram Specification: Theory and New Algorithms for Color Image Enhancement," IEEE Transactions on image processing, vol. 23, No. 9, September 2014.
- [5].Manuel Grand-Brochier, and Antoine Vacavant, "Tree leaves extraction in natural images: Comparative study of preprocessing tools and segmentation methods," IEEE Transactions on Image Processing in 2015.
- [6].Shivkumar Bagde, and Swaranjali Patil, "Artificial Neural Network Based Plant Leaf Disease Detection," International Journal of computer science and mobile computing, vol. 4, Issue. 4 , April 2015.
- [7].Kumthekar, and Patil, "Key frame extraction using color histogram method," International Journal of Scientific Research Engineering Technology (IJS RET), vol 2, Issue. 4, July 2018.



INNO  **SPACE**
SJIF Scientific Journal Impact Factor
Impact Factor: 8.379



ISSN INTERNATIONAL
STANDARD
SERIAL
NUMBER
INDIA



INTERNATIONAL JOURNAL OF INNOVATIVE RESEARCH

IN COMPUTER & COMMUNICATION ENGINEERING

 **9940 572 462**  **6381 907 438**  **ijircce@gmail.com**



www.ijircce.com

Scan to save the contact details