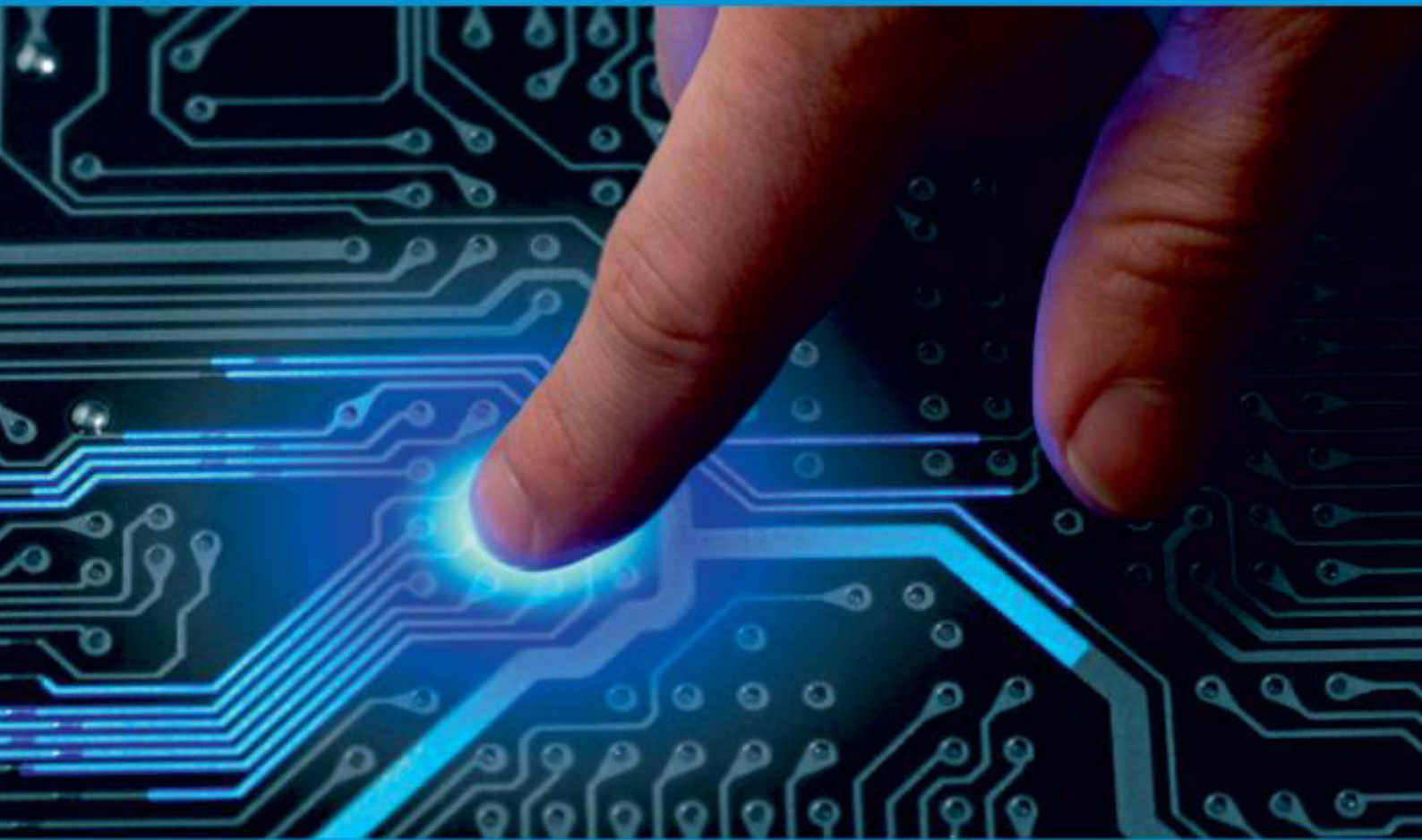




IJIRCCCE

e-ISSN: 2320-9801 | p-ISSN: 2320-9798



INTERNATIONAL JOURNAL OF INNOVATIVE RESEARCH

IN COMPUTER & COMMUNICATION ENGINEERING

Volume 10, Issue 5, May 2022

ISSN INTERNATIONAL
STANDARD
SERIAL
NUMBER
INDIA

Impact Factor: 8.165



9940 572 462



6381 907 438



ijircce@gmail.com



www.ijircce.com

Online Heart Disease Predictor

Mr. K.C.Patil¹, Siddhesh.S.Shinde², Suraj.N.Mane³, Pranav.N.Sawant⁴

* Department of Computer Engineering. JSPM's RSCOE Polytechnic, Pune, India^{1,2,3,4}

ABSTRACT: Now days, **Heart disease** is the most common disease. But, unfortunately the treatment of heart disease is somewhat costly that is not affordable by common man. Hence, we can reduce this problem in some amount just by predicting heart disease before it becomes dangerous using Heart Disease Prediction System. If we can find out heart disease problem in early stages then It becomes very helpful for treatment

KEYWORDS: Heart Disease Predictor Website, Website (App),

I. INTRODUCTION

The health care industries collect huge amounts of data that contain some hidden information, which is useful for making effective decisions. For providing appropriate results and making effective decisions on data. The system uses 15 medical parameters such as age, sex, blood pressure, cholesterol, and obesity for prediction. The HDPS predicts the likelihood of patients getting heart disease. It enables significant knowledge. E.g. Relationships between medical factors related to heart disease and patterns, to be established. The obtained results have illustrated that the designed system can predict the patients heart condition.

II. LITERATURE SURVEY

We want to build a website where patients can check their heart condition!!

- In other websites patients have to do login or sign up but in this websites there is no login or sign up!!
- There are very few websites are available on Internet which predict Is the patient diagnosed or not with Heart Disease.
- We've taken reference from different websites like Kaggle to build a strong software.

III. METHODOLOGY

The experiment was carried out on a publicly available database for heart disease. The dataset contains a total of 303 records that were divided into two sets, training set (40%) and testing set (60%). PHP language and SQL queries a was used for the experiment. This Querries are used for to get the Data from user and aslo in Admin section to add data in the database. After getting the val8ues from user these queries manupulate that values with the values which are in added by admin in the Database.

After this process when user clicks on the submit button Output will be Shown on the User D3evice Screen.! This website is free for everyone and it is easy to use!!

IV. RESULTS

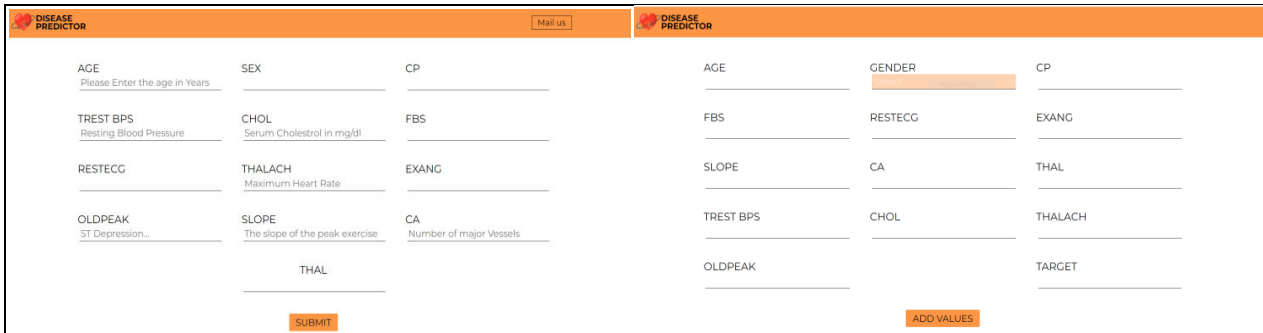


Figure 1: - Home page

Figure 2: - Admin's page

RESULTS

We have successfully developed an E-commerce website. This website will save the time and money of the patients. The website has an admin dashboard where the admin can maintain the website. It has been a great pleasure for me to work on this exciting and challenging project. This project proved good for me as it provided practical knowledge of not only programming in Python and Sqlite web based application. It also provides knowledge about the latest technology used in developing web enabled application and client server technology that will be great demand in future. This will provide better opportunities and guidance in future in developing projects independently.

REFERENCES

1. <https://www.w3schools.com/>
2. <https://www.kaggle.com/>
3. <https://www.tutorialspoint.com/php/index.htm>
4. <https://www.stackpath.com/maxcdn/>
5. <https://www.bootstrapcdn.com/>
6. <https://www.youtube.com/?gl=IN>
7. <https://stackoverflow.com/>
8. <https://www.php.net/manual/en/function.hash.php>



INNO  SPACE
SJIF Scientific Journal Impact Factor

Impact Factor: 8.165

 **doi**[®]
cross **ref**

ISSN INTERNATIONAL
STANDARD
SERIAL
NUMBER
INDIA



INTERNATIONAL JOURNAL OF INNOVATIVE RESEARCH

IN COMPUTER & COMMUNICATION ENGINEERING

 9940 572 462  6381 907 438  ijircce@gmail.com



www.ijircce.com

Scan to save the contact details