



IJIRCCCE

e-ISSN: 2320-9801 | p-ISSN: 2320-9798



INTERNATIONAL JOURNAL OF INNOVATIVE RESEARCH

IN COMPUTER & COMMUNICATION ENGINEERING

Volume 11, Issue 6, June 2023

ISSN INTERNATIONAL
STANDARD
SERIAL
NUMBER
INDIA

Impact Factor: 8.379

9940 572 462

6381 907 438

ijircce@gmail.com

www.ijircce.com

The Design and Development of A Webpage

Susanta Das¹, Koushik Pal², Antara Ghosal³, Anurima Majumdar⁴, Avali Banerjee⁵, Palasri dhar⁶,
Suparna Biswas⁷

UG Student, Dept. of E.C.E., Guru Nanak Institute of Technology, Kolkata, West Bengal, India^{1,2,3,4,5,6}.

Assistant Professor, Dept. of E.C.E., Guru Nanak Institute of Technology, Kolkata, West Bengal, India⁷

ABSTRACT - Web page development is the process involved in developing a website for the Internet (World Wide Web) or an intranet (a private network) where it may range from developing a simple single static page of plain text to complex web applications having dynamic web pages which includes electronic businesses, network services, client-side/server-side scripting, Web server and network security configuration, and e-commerce development. The Web Development Projects are based on specific applications (For example banking applications or inventory system management). The purpose of Web projects is to transfer the static and dynamic content - both directly to end users, as well as indirectly through means of various kinds of interfaces or client based applications.

KEYWORDS: Web page development, a private network, Algorithm.

I. INTRODUCTION

A web project is the process of developing and creating a Web site, activities in a network which are aimed at a pre-defined goal. The goal of Web projects is the transfer of static and dynamic content - both directly to end users, as well as indirectly through means of various kinds of interfaces.

A. System analysis

System analysis is the process of gathering and interpreting facts, diagnosing problems and using the information to recommend improvement to the system, there are four basic elements in system analysis which are noted as follows:

Output i.e. what is the main aim of under-taking this project.

Input i.e. what are the chief ingredient of developing this proposed system.

Files i.e. where data are stored.

Process i.e. the manner of involving the programs and the way in which data is processed through the computer.

The system analysis segment of the project is divided into following categories:

- Identification of the need
- Preliminary investigation
- Feasible study
- Project planning

II. SYSTEM DESIGN

The Design Phase focuses on the detailed implementation of the system recommended in the feasibility study. Emphasis is on translating performance specifications into design specification. The design phase is a transition from a user-oriented document to a document oriented to the programmers or designer.

In this project the major aspect of is following –

- For the customers who wish to buy products, we have made the design so user-friendly that any one can use it in their flow.
- There are no bloatware and unnecessary option so consumers will not confuse where to go.
- The system is so smooth that the options are very responsive, if customers have a decent speed of internet, he can experience a smooth and lag free website to explore.
- Here we have designed a gallery section from where a customer can easily see what's available at our café and order it accordingly.

- And for the sake of customer, we also made a “contact us” section from where anyone can reach our service centre easily.

Hardware Requirement

Processor: Intel i3 microprocessor

Main Memory: 1 TB

Hard disk: Disk Space Required

Monitor : Dell E Series E2421HN 24-inch (60.96 cm) Screen Full HD (1080p) LED-Lit Monitor with IPS Panel, HDMI & VGA Port - E2421HN (Black)

Mouse : Scroll /optical

Software Requirement

Operating System: Windows 10.

Front end Tool: HTML5, CSS2.1,

Platform: Sublime Text

Language: CSS, HTML, java script

SOFTWARE INTERFACES:

Application: HTML, Java Script

Browser: Google chrome

Architecture: Web Based

Additional Software: MS – Office

FRONT-END DESIGN: -

The front end of a website is everything the user either sees or interacts with when they visit the website. It is responsible for the total look and feel of an online experience. The front end is a combination of two different elements: the graphic design (the look) and the (the feel). Each of these is created independently, with most of the technical work going into the user interface using web languages like HTML, CSS, and JavaScript.

In our website, when a customer opens the website, it will be a great experience for him witnessing our beautiful art on the interface that would welcome him with our main vision in our café. After that customer will see a cool animation of picture blended within them.

So, let's come to the body part, where there is our logo for display as well as “home”, “about”, “contact us” and “gallery” buttons are present. After opening the website user will land on the default home page from where user can navigate throughout the page and use different option according to user's will.

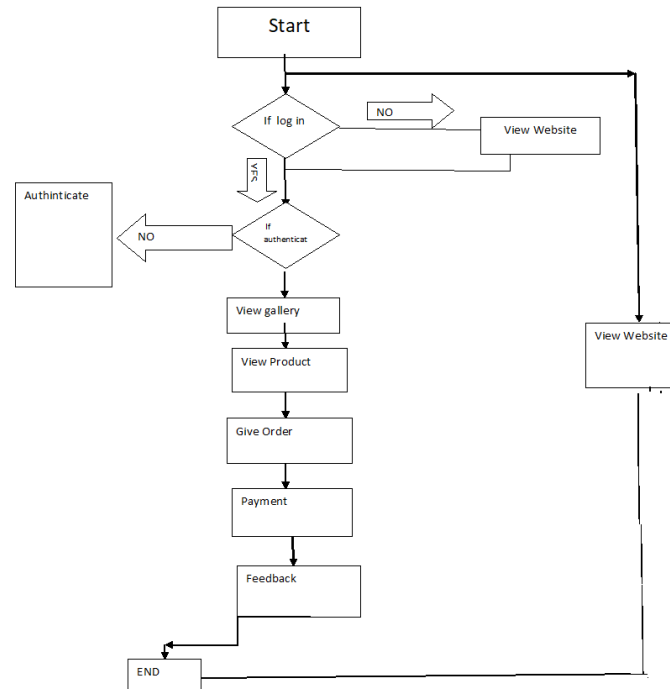
After that user can see “about” button from where he can get knowledge about our café, our staffs and our quality control process especially after covid pandemic. So, users can ensure themselves the safety of their family.

Then there is a very useful button “contact us”, here any user can freely interact with us with their problems and also with their feedback. Because we believe in family and relation the most important moto of our café. We want to build a very good contact with our customers. For contacting us a user has to fill his very minimal personal information such as name, email, phone no etc. The information will be kept safe and secure from any external threat.

Now comes the most important part of our website which is “gallery”. Here any user can see the available items in our café and can give order as choice. When user chooses any item it will redirect to page where user can select no of order he want to make as well as can chooses many more personalized specification. From there user can see payment option and can make payment via various source as will.

In the tail section of the website there are our social media links where we regularly post our new dishes. And there is option of mailing us and direct contact no for any use of user.

III. PROPOSED ALGORITHM



The system has been implemented and tested successfully .It meets the information requirements specified to the great extent. Some of screen shots shown below:

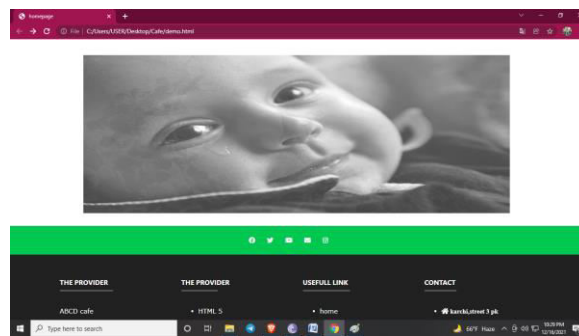


Fig. 1

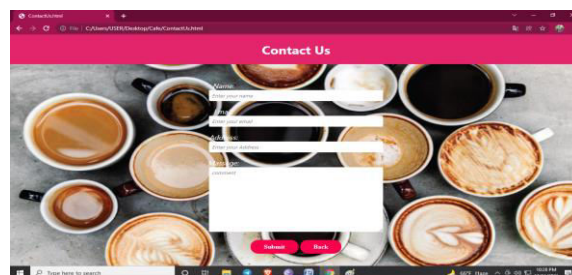


Fig. 2

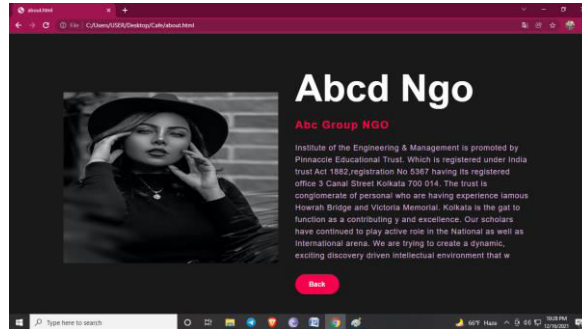


Fig. 3

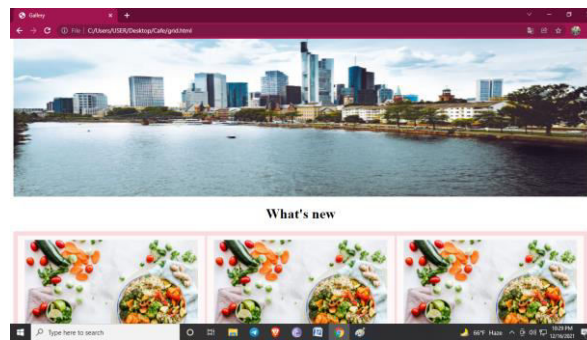


Fig. 4

IV. CONCLUSION AND FUTURE WORK

The simulation results showed that the proposed algorithm performs better with the total transmission energy metric than the maximum number of hops metric. The proposed algorithm provides energy efficient path for data transmission and maximizes the lifetime of entire network. As the performance of the proposed algorithm is analyzed between two metrics in future with some modifications in design considerations the performance of the proposed algorithm can be compared with other energy efficient algorithm. We have used very small network of 5 nodes, as number of nodes increases the complexity will increase. We can increase the number of nodes and analyze the performance.

As web developers, we are constantly trying to address the problem of inconsistencies between the renderings of web pages by different browsers and browser versions. This necessitates either time consuming double/multiple coding, or coding for a single browser which makes it harder, if not impossible, for some of the public to use the site. The standards are for the most part decided by representatives of the same people who use those-browser makers, web developers, content providers, and other organizations.

The universal adoption of web standards is becoming of paramount importance. The mission of The Web Standards Project is to make the Web a better place, for developers and for end-users, by encouraging browser and web page editor makers to follow the standards in their applications.

The reasons we have given should give you, the web developer, plenty of incentive to begin using standards, and also plenty of ammunition with which you can encourage your place of business and fellow developers to use those standards. “compliment,” “discreet” and “discrete,” “principal” and “principle.” Do not confuse “imply” and “infer.” The prefix “non” is not a word; it should be joined to the word it modifies, usually without a hyphen. There is no period after the “et” in the Latin abbreviation “et al.” The abbreviation “i.e.” means “that is,” and the abbreviation “e.g.” means “for example.”

REFERENCES

1. ISO – International Standard Organization, ISO/IEC 12207: Standard for Information Technology – Software Lifecycle Processes (1998)
2. WHATWG Wiki, Implementations in Web browsers, http://wiki.whatwg.org/wiki/Implementations_in_Web_browsers.
3. T. Berners-Lee, J. Hendler, O. Lassila: The Semantic Web, Scientific American Magazine, 2001



4. Conallen, Jim. Building web applications with UML. Addison Wesley, 2000.
5. Escalona, M.J., Mejías, M., & Torres, J. (2002) Methodologies to develop WebInformation Systems and Comparative Analysis.



INNO  **SPACE**
SJIF Scientific Journal Impact Factor
Impact Factor: 8.379



ISSN INTERNATIONAL
STANDARD
SERIAL
NUMBER
INDIA



INTERNATIONAL JOURNAL OF INNOVATIVE RESEARCH

IN COMPUTER & COMMUNICATION ENGINEERING

 **9940 572 462**  **6381 907 438**  **ijircce@gmail.com**



www.ijircce.com

Scan to save the contact details