

Capabilities and Key Benefits of Sap NetWeaver Gateway

Yeshwanth Valaboju¹

Consultant, SAP FIORI, JK Technosoft Pvt. Ltd, India¹

ABSTRACT: SAP Fiori is a brand new offering coming from SAP, based on the HTML5 framework. A great deal helpful about Fiori is available on the Internet, yet the details are scattered all over numerous web sites as well as resources. Customers that are brand-new to SAP Fiori may discover it hard to acquire a total concept of what Fiori is.

KEYWORDS: Sap Fiori, sap netweaver gateway

I. INTRODUCTION

Why Fiori?

Before, SAP consumers fussed concerning the old-fashioned look of the common display and also the fact that SAP can simply be accessed using its personal computer GUI for the majority of deals. SAP paid attention to this response from around the globe and introduced a collection of applications, based on the HTML5 framework, that includes the best largely as well as often utilized SAP transactions: purchase order commendation, sales purchase creation, relevant information look for, self-service duties, etc. These HTML5 applications are very easy to accessibility flawlessly around personal computers, tablet computers, and also mobile phones (see Figure 1). This compilation of apps are named Fiori.



Figure 1: The Fiori user experience as seen on all types of devices

The condition Fiori is an Italian phrase that indicates "blooms." SAP wished a gorgeous UI for its current GUI, and also it additionally would like to develop a basic, classy user experience. In the beginning, SAP charged a license cost per Fiori individual. After obtaining problems coming from clients about purchasing an added certificate in addition to their existing ERP permit, as well as from company firms that discovered it difficult to persuade consumers to pay for the extra price, SAP revealed at the February 2014 SAPHIRE celebration that Fiori would certainly be free of cost for any kind of consumer with an SAP certificate. This decision led to a higher adoption cost for Fiori as well as the increased market requirement for Fiori-based custom UI5 applications.

International Journal of Innovative Research in Computer and Communication Engineering

(A High Impact Factor, Monthly, Peer Reviewed Journal)

Website: www.ijirccce.com

Vol. 7, Issue 1, January 2019

One disadvantage of current SAP deals is that some deals are complicated, and also the very same transactions are made use of to conduct numerous activities. Because of this, deals might have many areas as well as setups and also come to be hard to make use of. For instance, mean a sales as well as distribution (SD) professional accesses purchase VA01 to execute SD-related activities (find Figure 2). The purchase functions alright if the user recognizes with the sophisticated measures and also fields called for to accomplish the task. But a purchases rep whose top priority is making sales instead of spending time producing a sales purchase in the complex GUI, this purchase might be actually difficult, and also many of the industries and alternatives may seem to be complicated and irrelevant.

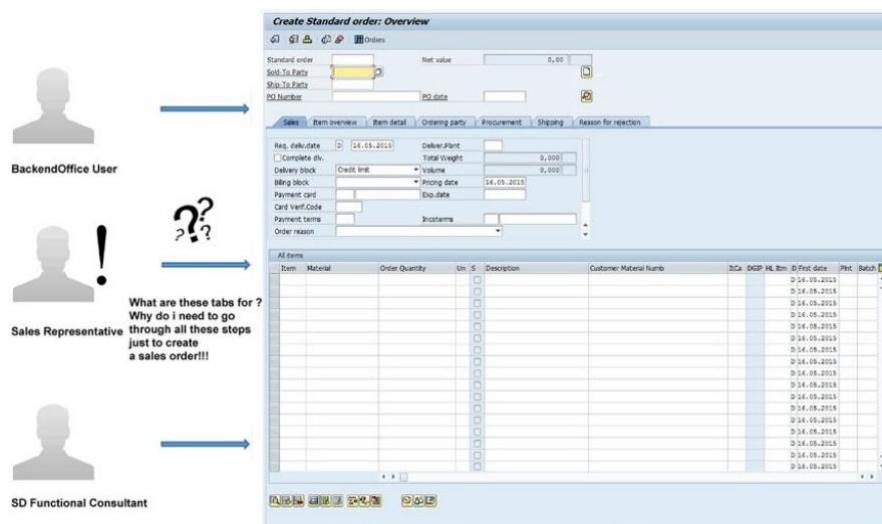


Figure 2: An example scenario with the VA01 Create Sales Order transaction

To stay away from such situations, SAP simplified its own facility UIs as well as divided them right into several easy User interfaces whose aspects make sense to the individual. For example, when a purchases representative uses the Fiori Purchases Order request received Figure 3, all the factors are useful. The sales associate can develop purchases without utilizing the SAP GUI-- the representative may even make a sales order on the go, coming from a mobile phone.

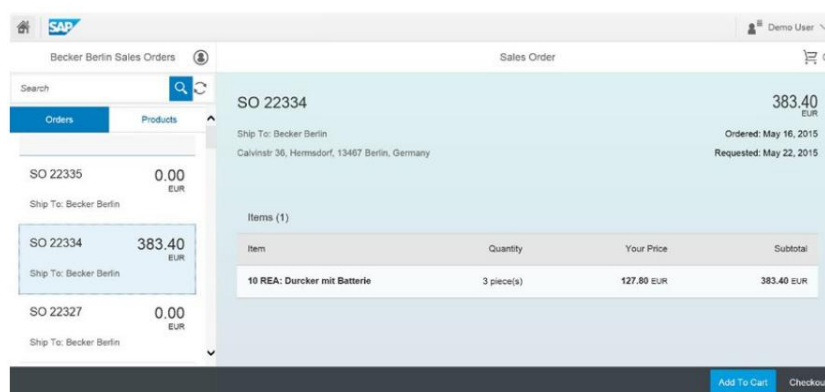


Figure 3: The Fiori Sales Order application simplifies the VA01 transaction by including only the minimum required fields to complete the task

International Journal of Innovative Research in Computer and Communication Engineering

(A High Impact Factor, Monthly, Peer Reviewed Journal)

Website: www.ijircce.com

Vol. 7, Issue 1, January 2019

On top of that, to conduct easy procedures, SAP customers often must carry out several purchases.

SAP Fiori is a brand-new customer experience (UX) for SAP software program and also applications. It supplies a set of applications that are used in normal service functionalities like job commendations, monetary applications, computation apps as well as various self-service applications.

SAP Fiori delivers 300+ role-based applications like HR, Production, financing, etc. When you open the SAP Fiori web page treatment, you will see a picture of the blooms. It is because Fiori suggests 'flowers' in Italian.



SAP Fiori provides all service roles directly on suitable hand devices. It offers organization tasks on user-friendly functions, easy along with unequalled cooperation on a personal computer, mobile phones and Tablets.

SAP Fiori permits numerous tool applications that make it possible for users to start a method on their desktop/laptops and also to continue that procedure on a cell phone or a tablet. SAP has cultivated Fiori Application based on User interface UI5.

When SAP Fiori is integrated with the electrical power of the SAP HANA, it delivers an unmatched request-response and query-execution opportunity. SAP Fiori consumer knowledge (UX) is made use of to supply a personalized as well as role-based customer expertise for enterprise-wide interaction across work.

II. SAP FIORI – SAP NET WEAVER GATEWAY

SAP Net Weaver Gateway is made use of to set up a connection in between SAP company suite and aim at clients, systems and structure. It gives progression as well as production resources to make OData services to different client development tools.

SAP Net Weaver gateway provides a less complicated technique for the consumption on company logic and also information for SAP Back-end system on web applications. It additionally reduces the intricacy to access SAP records and gives easy interfaces to decrease the growth time.

SAP Net Weaver Gateway: Capabilities and Key Benefits

SAP Net Weaver Gateway is an innovation that gives a simple technique to connect units, environments and also platforms to SAP program based upon market criteria.

Non-disruptive, any kind of SAP service set.

Ease to establish simple APIs and does certainly not require any sort of tool understanding.

Based on REST, ATOM/OData. It permits connectivity to SAP applications utilizing any sort of programs language or even style, without the demand for SAP expertise, by leveraging REST services as well as OData/ATOM process.

International Journal of Innovative Research in Computer and Communication Engineering

(A High Impact Factor, Monthly, Peer Reviewed Journal)

Website: www.ijircce.com

Vol. 7, Issue 1, January 2019

It provides plug-ins for widely known IDEs such as Eclipse, Visual Studio 2010 as well as XCode.

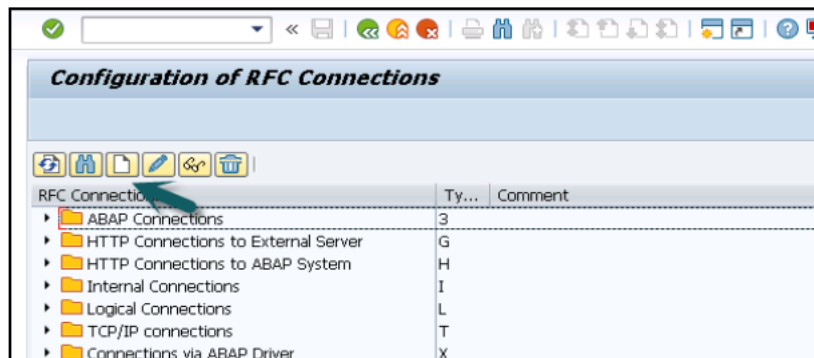
Connect SAP NetWeaver Gateway to SAP Business Suite

This involves configuring Back-end server as trusting system.

Step 1: Use T-code: **SM59**



Step 2: Click on create icon as shown below.



Step 3: Enter the details as shown below:

- RFC Destination Name
- Connection Type:3

Step 4: Go to the **Technical Settings** tab and enter the details as explained below.

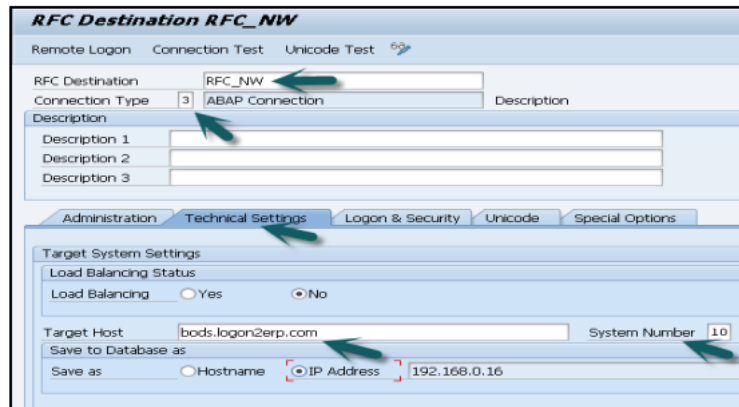
Step 5: Enter the gateway host in the **Target Host** field and Instance number in the **System Number** field.

International Journal of Innovative Research in Computer and Communication Engineering

(A High Impact Factor, Monthly, Peer Reviewed Journal)

Website: www.ijircce.com

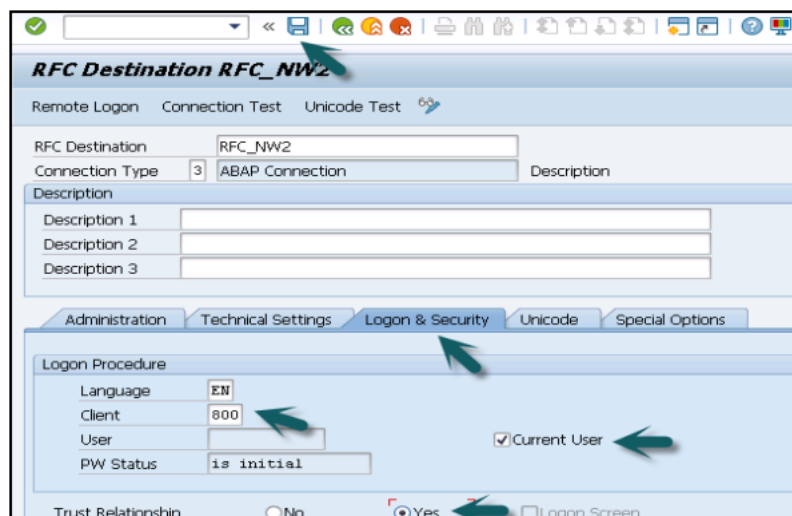
Vol. 7, Issue 1, January 2019



Step 6: Go to the **Logon & Security** tab and enter the details.

Step 7: Enter the client number and click on **Current user** for authentication.

Step 8: Select **Trust Relationship** as **Yes** and click the **save** icon at the top.



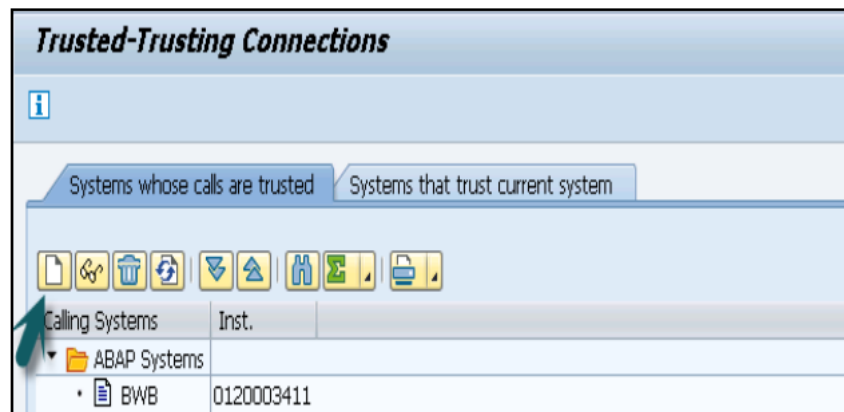
Step 9: Go back to the home screen and use T-code: **SMT1**

International Journal of Innovative Research in Computer and Communication Engineering

(A High Impact Factor, Monthly, Peer Reviewed Journal)

Website: www.ijirccce.com

Vol. 7, Issue 1, January 2019



Step 10: Click the **create icon** as shown below.

The **Trusting Wizard** will open.

Step11: Enter the details of RFC destination that you have just created and click **Continue**.

Step 12: The information of trusted system is displayed. Click the **Save** button.

Listed here, you have determined trust fund partnership between your SAP system and also NetWeaver Gateway bunch by setting up SAP system to be counting on the device as well as NW multitude to become counted on unit This permits the remote login for consumers to use the customer data in SAP NetWeaver gateway and also SAP body.

III. CONCLUSION

SAP divided these sophisticated transactions into smaller applications, streamlining all of them as well as creating them details to the jobs of certain consumers. Concurrently, SAP combined repeated deals. Using this strategy, SAP developed role-based applications: the very first wave of Fiori applications (called Fiori Surge 1 applications) included a set of 25 applications targeted at customers such as supervisors, workers, sales representatives, as well as acquiring substances.

REFERENCES

1. Sugandhi Maheshwaram, "A Review on Deep Convolutional Neural Network and its Applications", International Journal of Advanced Research in Computer and Communication Engineering, Vol. 8, Issue 2, 2019
2. Sugandhi Maheshwaram, "CLOUD DEPLOYMENT STRATEGIES AND CONCEPTUAL VIEW OF CLOUD COMPUTING", Alochana Chakra Journal, Volume VIII, Issue VI, 2019
3. Sugandhi Maheshwaram, "A Comprehensive Review on the Implementation of Big Data Solutions", International Journal of Information Technology and Management Vol. XI, Issue No. XVII, November-2016
4. Sugandhi Maheshwaram, "A STUDY ON THE CHALLENGES IN HANDLING BIG DATA", International Journal of Research, Volume VIII, Issue III, 2019
5. Sugandhi Maheshwaram, "A STUDY ON THE CONCEPT AND EVOLUTION OF MACHINE LEARNING", INTERNATIONAL JOURNAL FOR RESEARCH & DEVELOPMENT IN TECHNOLOGY, Volume-11, Issue-5, 2019
6. Sugandhi Maheshwaram, "A Novel Technique for Preventing the SQL Injection Vulnerabilities", International Journal of Research and Applications, Volume 5, Issue 19, July-Sep 2018
7. Sugandhi Maheshwaram, "A Study on Security Information and Event Management (SIEM)", International Journal of Research and Applications, Volume 5, Issue 17, Jan-Mar 2018
8. Sugandhi Maheshwaram, "A Study Design of Big Data by Concentrating on the Atmospheric Information Evaluation", International Journal for Scientific Research & Development, Vol. 7, Issue 03, 2019



ISSN(Online): 2320-9801
ISSN (Print) : 2320-9798

International Journal of Innovative Research in Computer and Communication Engineering

(A High Impact Factor, Monthly, Peer Reviewed Journal)

Website: www.ijircce.com

Vol. 7, Issue 1, January 2019

9. Sugandhi Maheshwaram, "Architectural Framework of Cloud Computing Environment", International Journal of Scientific Research in Science, Engineering and Technology, Volume 4, Issue 1, January-February 2018
10. Sugandhi Maheshwaram, "An Overview of Open Research Issues in Big Data Analytics", Journal of Advances in Science and Technology, Vol. 14, Issue No. 2, September-2017
11. Sugandhi Maheshwaram, "CLOUD DEPLOYMENT STRATEGIES AND CONCEPTUAL VIEW OF CLOUD COMPUTING", Alochana Chakra Journal, Volume VIII, Issue VI, 2019
12. Sugandhi Maheshwaram, "A Study on Vulnerabilities, Applications, Advantages and Routing Protocols in MANET", International Journal of Scientific Research in Science and Technology, Volume 4, Issue 1, January-February 2018
13. Sugandhi Maheshwaram, "An Overview towards the Techniques of Data Mining", RESEARCH REVIEW International Journal of Multidisciplinary, Volume 04, Issue 02, 019
14. Sudheer Kumar Shriramoju, "Access Control and Density Based Notion of Clusters", International Journal of Scientific Research in Science and Technology (IJSRST), Online ISSN : 2395-602X, Print ISSN : 2395-6011, Volume 1 Issue 3, pp. 215-220, July-August 2015.
15. Sudheer Kumar Shriramoju, "Review on NoSQL Databases and Key Advantages of Sharepoint", International Journal of Innovative Research in Science, Engineering and Technology, ISSN(Online): 2319-8753, ISSN (Print): 2347-6710, Vol. 7, Issue 11, November 2018.
16. Sudheer Kumar Shriramoju, "Capabilities and Impact of SharePoint On Business", International Journal of Scientific Research in Computer Science, Engineering and Information Technology (IJSRCSEIT), ISSN : 2456-3307, Volume 2, Issue 6, November-December-2017.
17. Sudheer Kumar Shriramoju, "Security Level Access Error Leading to Inference and Mining Sequential Patterns", International Journal of Scientific Research in Science, Engineering and Technology, Volume 2, Issue 4, July-August 2016
18. Sudheer Kumar Shriramoju, "An Overview on Database Vulnerability and Mining Changes from Data Streams", International Journal of Information Technology and Management, Vol. VII, Issue No. IX, August-2014
19. Sudheer Kumar Shriramoju, "A Comprehensive Review on Database Security Threats and Visualization Tool for Safety Analyst", International Journal of Physical Education and Sports Sciences, Vol. 14, Issue No. 3, 2019
20. Sudheer Kumar Shriramoju, "Integrating Information from Heterogeneous Data Sources and Row Level Security", Journal of Advances and Scholarly Researches in Allied Education, Vol. IV, Issue No. VIII, October-2012
21. Sudheer Kumar Shriramoju, "A Review on Database Security and Advantages of Database Management System", Journal of Advances in Science and Technology, Vol. V, Issue No. X, August-2013
22. Sudheer Kumar Shriramoju, "Security Challenges of Service and Deployment Models", International Journal of Scientific Research in Science and Technology, Volume 4, Issue 8, May-June 2018
23. Sudheer Kumar Shriramoju, "A REVIEW ON DIFFERENT TYPES OF VIRTUALIZATION AND HYPERVISOR", Alochana Chakra Journal, Volume VIII, Issue II, 2019
24. Sudheer Kumar Shriramoju, "Cloud security - A current scenario and characteristics of cloud computing", International Journal of Research and Applications, Volume 5, Issue 18, Apr-Jun 2018
25. Sudheer Kumar Shriramoju, "SECURITY ISSUES, THREATS AND CORE CONCEPTS OF CLOUD COMPUTING", Airo International Research Journal, Volume IX, Feb 2017.
26. Malyadri. K, "Architecture and Components of Cloud-Based ML Framework", International Journal of Advanced Research in Electrical, Electronics and Instrumentation Engineering, Vol. 8, Issue 1, January 2019
27. Malyadri. K, "An Overview towards the Different Types of Security Attacks", International Journal of Innovative Research in Computer and Communication Engineering, Vol. 2, Issue 8, August 2014
28. Malyadri. K, "Security Threats, Security Vulnerabilities and Advance Network Security Policies", International Journal of Innovative Research in Science, Engineering and Technology, Vol. 2, Issue 9, September 2013
29. Malyadri. K, "Need for Key Management in Cloud and Comparison of Various Encryption Algorithm", International Journal of Scientific Research in Computer Science, Engineering and Information Technology, volume 1, issue 1, July-August 2016



ISSN(Online): 2320-9801
ISSN (Print) : 2320-9798

International Journal of Innovative Research in Computer and Communication Engineering

(A High Impact Factor, Monthly, Peer Reviewed Journal)

Website: www.ijircce.com

Vol. 7, Issue 1, January 2019

30. Malyadri. K, "Integration of Appropriate Analytic tools towards Mobile Technology Development", International Journal of Innovative Research in Computer and Communication Engineering, Vol. 6, Issue 6, June 2018
31. Malyadri. K, "A STUDY ON EXPERIENCES AND LIMITATIONS OF MOBILE COMMUNICATION", Alochana Chakra Journal, Volume VI, Issue VIII, August 2017
32. Malyadri. K, "CHALLENGES CONCERNING MOBILE DEVELOPMENT AND MODEL-DRIVEN DEVELOPMENT OF MOBILE APPS", Airo International Research Journal, volume XVI, Nov 2018
33. Malyadri, N. Surya Teja, "Related technologies and the role of mobile app development life cycle", International Journal of Research and Applications, Volume 5, Issue 17, Jan-Mar 2018.