



International Journal of Innovative Research in Computer and Communication Engineering

(An ISO 3297: 2007 Certified Organization)

Vol. 3, Issue 10, October 2015

Pollution Check in Vehicles and Alerting System using Location Identifier

Vasana prathyusha¹, P. Bala murali krishna²

¹PG student, Dept of ECE, Sri Mittapalli Institute of Technology for Women, Tummalapalem, Guntur, A.P, India

²Professor, Dept of ECE, Sri Mittapalli Institute of Technology for Women, Tummalapalem, Guntur, A.P, India

ABSTRACT: This paper presents automated control system for air pollution detection in vehicles. As the usage of vehicles is more in these days, pollution is increasing drastically. As a solution to the above problem we aim to build an embedded system for controlling the pollution in vehicles. This emission from vehicles cannot be completely avoided but it definitely be controlled by using semiconductor sensors for detecting the various gases. This system "Pollution check in vehicles and alerting system" uses GPS and GSM Technologies. When the pollution/ emission level shoots beyond the already set threshold level, there will be a buzz in the vehicle to indicate that the limit has been breached and this information will be send to the registered mobile number using GSM. During this time period, the GPS starts locating the vehicle and GPRS display the values on the webpage. The synchronization and execution of the entire process is monitored and controlled by a micro controller.

KEYWORDS: Microcontroller, GPS, GSM

I. INTRODUCTION

Along with health concerns, pollution is being greatly considerable in environmental matters. One of the major concerns regarding the environment is air pollution. Air pollution contributes to the green house gases, which affects the ozone layer. Air pollution [1] is not only harmful to the environment but also to all other living beings on earth. Air pollutants that are inhaled have serious impact on human health affecting the lungs and the respiratory system. Vehicles and Industries are the major sources of Environmental Pollution. Every vehicle will have emission but the problem occurs due to the improper maintenance of vehicles. This emission from vehicles cannot be completely avoided but it definitely be controlled. For that, we have designed an excellent system which controls the pollution in vehicles.

The main pollutants[2] from vehicles are the oxides of carbon and nitrogen, which can be easily detected these days with the help of semiconductor gas sensors. Therefore, in this paper we prepare a system useful in reducing the amount of pollution from vehicles. The proposed automated control system uses GSM & GPRS. We use CO and temperature sensors[3]-[4] to detect the pollutants.GSM technology is used to send the sensed levels of pollutants to the mobile and GPRS technology is used to post the same on the webpage.

The rest of the paper is organized as follows. Section 2 gives the system resources, section 3 gives the design of proposed embedded system, section 4 explains about the working of proposed system and finally section 5 concludes the proposed system.

II.SYSTEM RESOURCES

In this section we describe the hardware resources that we mainly used in our proposed system.

A. LPC2148 Micro controller

LPC2148 is the widely used IC from ARM-7 family. It is manufactured by Philips (NXP) and it is pre-loaded with many inbuilt peripherals making it more efficient and a reliable option for the beginners as well as high end application developer. In this paper, LPC2148 is used, which is a 16 bit micro controller. It consists of three inbuilt timer/counter which will be used for the timer configuration.

International Journal of Innovative Research in Computer and Communication Engineering

(An ISO 3297: 2007 Certified Organization)

Vol. 3, Issue 10, October 2015

The microcontroller[8] is programmed to do three functions namely comparison, timer and triggering circuit. The microcontroller takes in two inputs; one from the smoke sensor's output and another being the pre-defined threshold value. When the smoke sensor output is more than the threshold value, the microcontroller triggers the timer circuit and an alarm[5] is set off to inform the driver of the vehicle, about the same and also indicate that the vehicle will come to a halt in 2KM RANGE as the timer runs out. Apart from the timer being triggered, a trigger is also given to the GPS, which helps in locating the nearest service station by SMS. Once the timer runs out, a trigger pulse is generated by the microcontroller which is fed to the fuel injector, which in turn stops the flow of fuel to the engine, as a result of which, the vehicle comes to a halt.

B. Liquid-crystal display (LCD)

It is a flat panel display, electronic visual display that uses the light modulation properties of liquid crystals. Liquid crystals do not emit light directly. LCDs are available to display arbitrary images or fixed images which can be displayed or hidden, such as preset words, digits, and 7-segment displays as in a digital clock. They use the same basic technology, except that arbitrary images are made up of a large number of small pixels, while other displays have larger elements.

III.DESIGN OF PROPOSED EMBEDDED SYSTEM

The proposed system consists of following blocks shown in fig1. Here micro controller is the main heart of the system followed by CO sensor, GSM, LCD, GPRS and GPS.

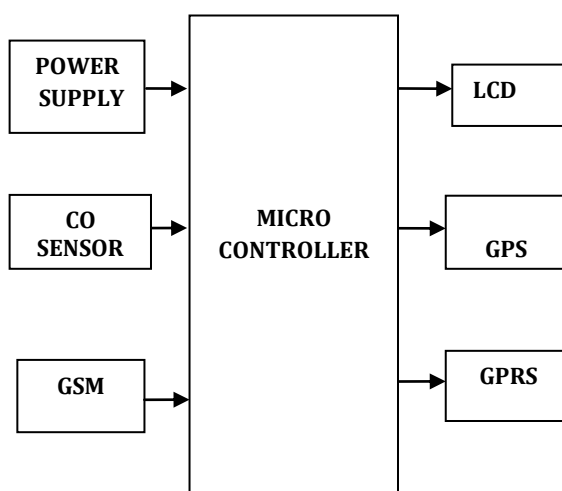


Fig1: Block diagram of proposed system

The design of the proposed system is explained as follows. The total equipment of this project is placed inside a vehicle; implemented system is shown in fig4. Here we have GPS (Global Positioning System) module by which we can get the location of the vehicle, the location values are displayed on the LCD (Liquid Crystal Display). In this project we have two sensors which are interfaced to the micro controller. Those are temperature sensor and CO sensor[6] through which we can measure the temperature[7] and amount of CO released from the vehicle. These values are also displayed on LCD. Whenever these values exceed the threshold then intimation is given to the RTA including vehicle's exact position. The operation of the system is explained as follows. The proposed system consists of power supply, which is of single-phase 230Vac. Then it is step down to 5v dc which is sufficient to our system. In the next step all the modules get initialized. As the proposed system uses semi conductor sensors at the emission outlets of vehicles which detects the level of pollutants and also the indication of this level are displayed on LCD using GPS and GPRS.

International Journal of Innovative Research in Computer and Communication Engineering

(An ISO 3297: 2007 Certified Organization)

Vol. 3, Issue 10, October 2015

A. CO Sensor

Carbon monoxide sensor is suitable for sensing CO concentrations in the air. This sensor has high sensitivity and fast response time. This sensor comes in a package. The CO sensor is used in gas leakage detecting equipments in home and industry, are suitable for detecting of LPG, i-butane, propane, methane, alcohol, Hydrogen, smoke. Here we are using MQ-4[6] sensor which is shown in fig2 and the specifications are given below.



Fig2: CO sensor

In this paper, carbon monoxide sensor (MQ-4) which can measure CO concentrations ranging from 10 to 10,000 ppm is considered. This sensor, basically finds usage in sensing carbon monoxide concentrations (ppm), in the exhaust of cars as shown in figure.3 and gives an analog output.

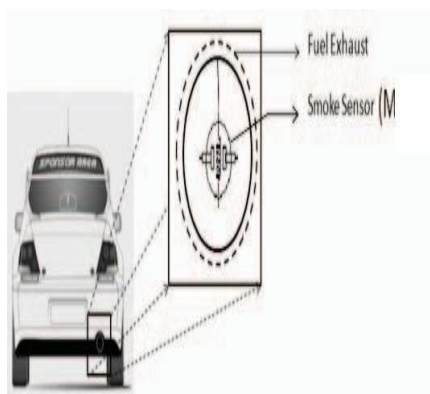


Fig 3: Smoke Sensor

The MQ-4 gas sensor is mainly made up of SnO₂, whose conductivity varies with the cleanliness of air i.e. it has a lower conductivity in clean air and vice-versa. The main advantage of the MQ-4 gas sensor is that it has high sensitivity to Carbon Monoxide. Additionally, it has a very long life time and is available at low cost. Also it can be used for a wide range of applications.

Specifications

The specifications of CO sensor are given below:

- 1) Semiconductor Type Gas Sensor.
- 2) Target gas/Typical detection ranges:
- 3) MQ-4: Methane, Natural gas, 500 to 10000ppm.
- 4) MQ-5: town gases, hydrogen, 100 to 3000ppm.
- 5) MQ-6: propane, butane, liquefied petroleum gas, 300 to 10000ppm.
- 6) Standard circuit conditions:
- 7) Heater voltage: 5V DC/AC
- 8) Circuit voltage: 3~15V DC
- 9) Heater power consumption: 750 Mw
- 10) Temperature range: -20deg. C to +40 deg. C
- 11) Size: Diameter19mm×High17mm or Diameter17mm×High10mm.

International Journal of Innovative Research in Computer and Communication Engineering

(An ISO 3297: 2007 Certified Organization)

Vol. 3, Issue 10, October 2015

We can see the sensed level of pollutants and the place where the vehicle gets stopped on the webpage by using this GPRS technology.

IV. WORKING OF THE PROPOSED SYSTEM

Pollution check in vehicles and alerting system using location identifier is mainly used for controlling the pollution by stopping the vehicles when it reaches the threshold value defined by the user, based on the RTA standards. Here we use CO sensor and temperature sensor. Implementation of the proposed system is shown in fig4 and the working of the system is explained below.

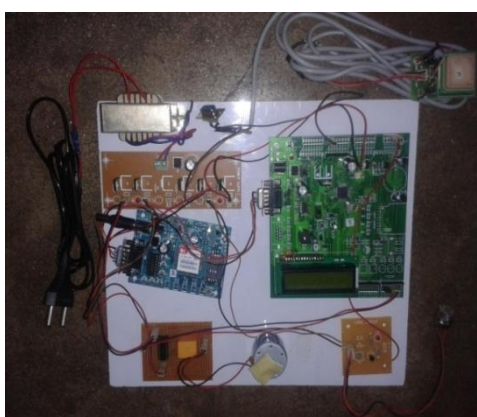


Fig4: Prototype of Proposed System

Before switch on the kit, first we switch on the GSM module. Then we switch ON the power supply block having 230V A.C supply as input to the step down transformer. After it is step down to 5V D.C which is sufficient to our system. Next all the modules get initialized, GSM, GPS and GPRS are connected . As we are using CO and Temperature sensor, the values of those sensors are displayed on the LCD. In addition to this latitudinal and longitudinal values are also displayed using the GPS, which monitor the exact position of the vehicle. The standardized threshold limit values[3] are set. In referred to this, pollution in the vehicle increases and exceeds the threshold limit the indication is given three times. Even if the vehicle continued the same then the vehicle gets stopped in the fourth time and an SMS is sent to the mobile, displaying the sensor values along with latitudinal and longitudinal values. Along this the same sensed values are posted on the web page shown in below figures 5&6.

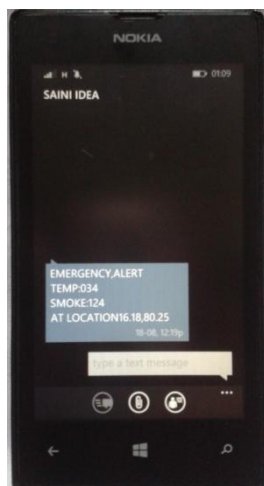


Fig5: Output values are displayed as a SMS using GSM technology

International Journal of Innovative Research in Computer and Communication Engineering

(An ISO 3297: 2007 Certified Organization)

Vol. 3, Issue 10, October 2015

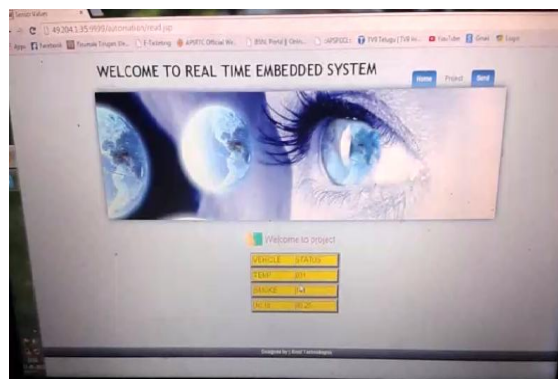


Fig 6: Output values are posted in a web page using GPRS technology

V.CONCLUSION

This paper mainly focuses on two operations. The first is we developed an embedded system to detect and control pollution from the vehicles. In this project we used LPC2148 micro controller, CO and temperature sensors for detecting the pollutants. The system is tested in diverse environmental condition. So our embedded system will be highly beneficial in curbing this problem. The second reason is that this system will be one of the greatest improvements in technology to keep the Environment free from vehicular emission and bring it to a halt if the Pollution level is more than the Standards mentioned by the Government. Our system will not change the configuration of the engine by any means, and it is employed in the existing vehicles. As our system is designed with low cost and low power, yielding high accuracy, this can be extended to home, transport and industrial applications.

REFERENCES

- [1] Sources and control of air pollution by R.J.Heinsohn, R.L.Kabel.
- [2] Siva Shankar Chandrasekharan, Sudharshan Muthukumar & Sabeshkumar Rajendran "Automated Control System for Air Pollution Detection in Vehicles" 2013 4th International Conference on Intelligent Systems, Modeling and Simulation, 2013 IEEE 2166-0662/13.
- [3] George F. Fine, Leon M. Cavanagh, Ayo Afonja and Russell Binions "Metal Oxide Semi-Conductor Gas Sensors in Environmental Monitoring", Sensors 2010, 10, 5469-5502;doi:10.3390/s100605469.
- [4] K. Galatsis, W. Wlodarsla, K. Kalantar-Zadeh and A. Trinchi, "Investigation of gas sensors for vehicle cabin air quality monitoring," vol.42, pp. 167-175,2002.
- [5] "Trade of Motor Mechanic"; Module 5; Unit 2 Electronic Fuel injection; Phase 2 by FÁS Learning Innovation Unit with Martin McMahon & CDX Global; Curriculum Revision 2.2 16-01-07
- [6] <http://www.sparkfun.com>
- [7] www.facstaff.bucknell.edu
- [8] ARM System-On-Chip Architecture by Steve Furber, 2000 Check pricing and availability: The ARM (Advanced RISC Machine) is probably the most popular 32-bit architecture for embedded systems. This book gives an introduction to the ARM architecture and compares derivatives such as ARM7, ARM9 and ARM10.
- [9] The 8051 Microcontroller: Hardware, Software and Interfacing by James Stewart, Kai Mia. 1998 Check pricing and availability: one of many books on the 8051. This is one is high-rated for providing fast access to hands-on experience. All examples and an 8051 assembler are included on floppy disks.
- [10] Michel Mouly and Marie-Bernadette Pautet: GSM System for mobile communications, published by the authors 1992,ISBN 2-9507190
- [11] Introduction to GPS www.cmtinc.com/gpsbook
- [12] GPRS-General Packet Radio Service A Book by Regis J."Bud" Bates, www.3.nd.edu.
- [13] Rogier Noldus, Intelligent Networks for the GSM, GPRS and UMTS Network.
- [14] Abid Khan, Ravi Mishra —GPS – GSM Based TrackingSystem, International Journal of Engineering Trends and Technology ,Volume3,Issue2, Pp: 161- 169,2012