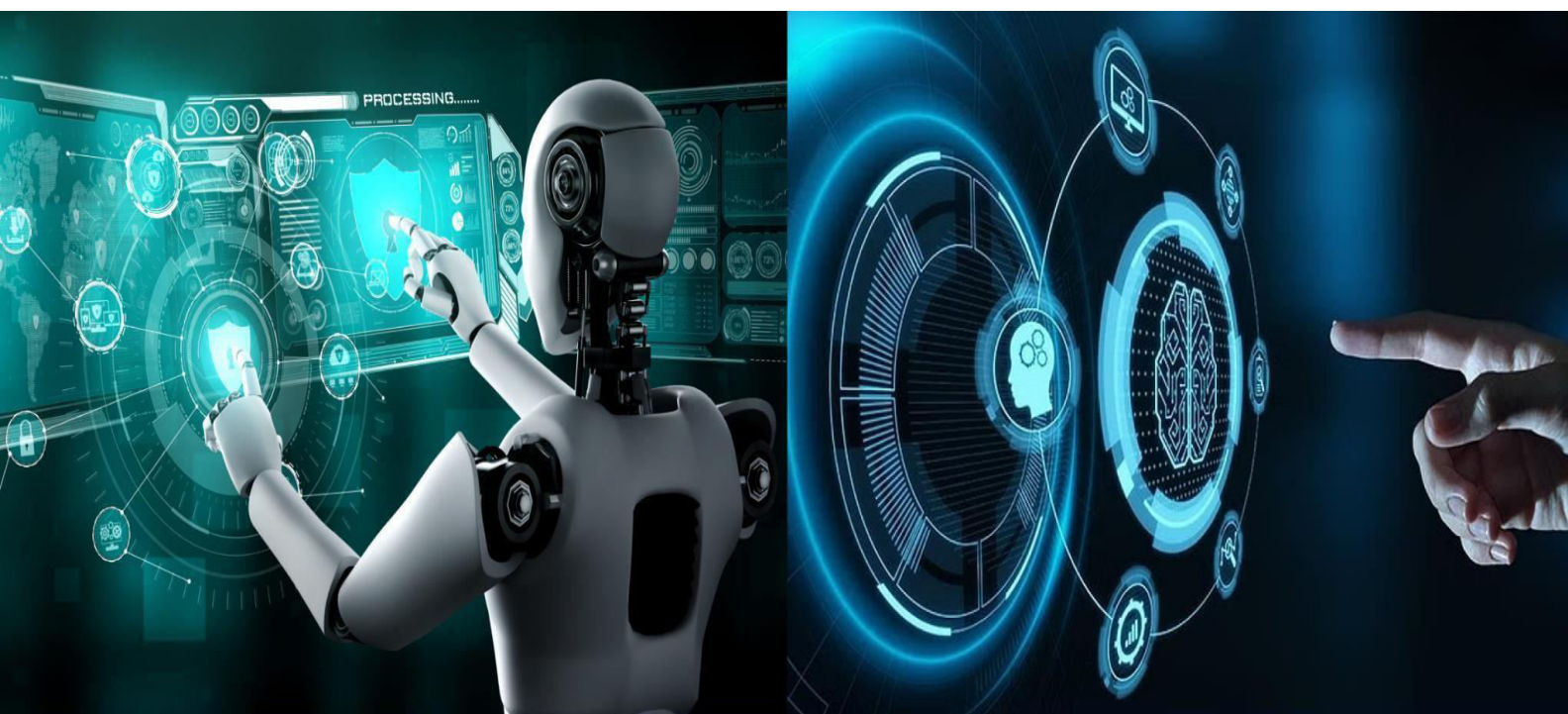


International Journal of Innovative Research in Computer and Communication Engineering

(A Monthly, Peer Reviewed, Refereed, Scholarly Indexed, Open Access Journal)





International Journal of Innovative Research in Computer and Communication Engineering (IJIRCCCE)

(A Monthly, Peer Reviewed, Refereed, Scholarly Indexed, Open Access Journal)

AI-Powered Travel Itinerary Generator

Prof. Ranjana B Jadekar¹, Mouiz Ur Rehaman², P Gautham³, Syed Kaifuddin⁴, Sunny Goud⁵

Assistant Professor, Department of CS&DS, Bapuji Institute of Engineering and Technology, Davanagere, Karnataka, India¹

U.G. Student, Department of CS&DS, Bapuji Institute of Engineering and Technology, Davanagere, Karnataka, India²⁻⁵

ABSTRACT: Travel planning is often a time-consuming process that requires users to search across multiple platforms to decide destinations, schedules, and activities. Many travelers struggle to create a well-structured itinerary that fits their budget, travel duration, and personal preferences. This project focuses on simplifying this process by using artificial intelligence and data-driven techniques to automatically generate personalized travel itineraries. In this study, we explore how Natural Language Processing (NLP) and Large Language Models (LLMs) can be used to understand user inputs such as destination, travel dates, and budget, and convert them into a detailed, day-wise travel plan. The system is implemented using a Django-based web application, where user data is processed and analyzed before being passed to an AI model that generates meaningful travel recommendations. The output includes daily activities, local attractions, food suggestions, and travel tips tailored to the user's requirements.

What makes this system effective is its ability to adapt recommendations based on constraints like travel duration and budget, reducing the need for manual planning. The inclusion of real-time data such as weather further improves the practicality of the generated itinerary. By automating the planning process, the system saves time and enhances the overall travel experience. Overall, this project demonstrates how data science, machine learning, and AI-based recommendation systems can be applied to the travel domain to provide personalized and intelligent solutions. With future improvements, the system can be extended to include hotel recommendations, cost prediction, and collaborative trip planning features.

KEYWORDS: Travel Itinerary Recommendation, Data Science Applications, Artificial Intelligence, Machine Learning, Natural Language Processing, Large Language Models, Recommendation Systems, Personalized Travel Planning, User Preference Analysis, Data-Driven Decision Making, Web-Based Application, Real-Time Data Integration, Weather-Aware Planning, Application Programming Interface, Budget-Constrained Optimization, Intelligent Systems.

I. INTRODUCTION

Travel planning has become increasingly complex due to the vast amount of information available across multiple online platforms, making it difficult for users to create an organized and personalized travel plan. Travelers often need to manually consider factors such as destination, duration, budget, weather conditions, and local attractions, which can be time-consuming and inefficient. To address this challenge, this project proposes an AI-based Travel Itinerary Recommendation System that automatically generates a structured, day-wise travel plan based on user inputs. By leveraging data science techniques, natural language processing, and machine learning models, the system analyzes user preferences and constraints to produce meaningful and personalized travel recommendations. The application is implemented as a web-based platform using the Django framework, providing an intuitive interface that simplifies travel planning and enhances the overall user experience. The system processes both structured and unstructured data to generate intelligent recommendations without requiring users to have prior planning expertise. Furthermore, the use of AI-driven automation helps reduce human bias and improves the consistency of itinerary generation. The proposed solution highlights the practical application of data science in decision-making systems and demonstrates how modern AI technologies can be used to solve everyday problems. With further enhancements, the system can be extended to include features such as hotel recommendations, route optimization, collaborative trip planning, and predictive cost estimation, making it a scalable and adaptable travel planning solution.

II. LITERATURE SURVEY

[1] 2015. Traditional Travel Planning Systems and Their Limitations.

In the early stages of digital travel planning, most systems focused on providing static information such as popular tourist destinations, hotel listings, and predefined tour packages. These platforms required users to manually browse multiple



International Journal of Innovative Research in Computer and Communication Engineering (IJIRCCE)

(A Monthly, Peer Reviewed, Refereed, Scholarly Indexed, Open Access Journal)

websites to compare options and create their own itineraries. Research during this period highlighted that traditional systems lacked personalization and were heavily dependent on user effort. Studies pointed out that such platforms did not consider individual preferences like budget, trip duration, or personal interests, leading to generic travel plans that were often inefficient and time-consuming.

[2] 2018. Emergence of Recommendation Systems in Travel Applications.

Things By 2018, travel applications began adopting **recommendation system techniques** such as collaborative filtering and content-based filtering. These systems analyzed user behavior, past bookings, and ratings to suggest destinations and attractions. Research showed that recommendation-based travel platforms improved user engagement and satisfaction. However, they suffered from challenges such as the cold-start problem, limited contextual awareness, and inability to generate a complete day-wise itinerary. Most systems focused on recommending individual items rather than providing an end-to-end travel plan.

[3] 2020. Integration of Context-Aware and Data-Driven Travel Planning.

Around 2020, researchers started incorporating contextual factors such as travel duration, seasonal trends, budget constraints, and real-time data into travel recommendation systems. Several studies explored the use of external APIs, including weather services and mapping tools, to enhance itinerary feasibility. These systems demonstrated better accuracy and relevance compared to earlier approaches. However, they often required complex rule-based logic and extensive configuration, making them difficult to scale and maintain.

[4] 2023. Application of Natural Language Processing in Travel Recommendation.

With advancements in **Natural Language Processing (NLP)**, travel systems began allowing users to express their preferences in natural language. NLP-based models enabled better understanding of user intent and improved interaction quality. Research showed that NLP-driven systems could extract meaningful information from unstructured inputs and provide more flexible recommendations. Despite these improvements, many systems still relied on predefined templates and lacked the ability to dynamically generate detailed itineraries.

III. EXISTING SYSTEM

Currently, most travelers plan their trips by manually searching for information across multiple travel websites, blogs, and booking platforms. Users typically look up destinations, tourist attractions, travel routes, hotels, and food options separately, and then try to combine this information into a suitable itinerary. The quality of the final travel plan largely depends on the user's personal experience, available time, and ability to compare different sources. This makes the planning process tedious and prone to errors or incomplete decisions. Although popular travel platforms provide recommendations, they are often generic and not fully personalized according to individual preferences such as budget, trip duration, or specific interests. In many cases, users are required to repeatedly modify their plans due to weather changes or time constraints, leading to frustration. Additionally, existing systems rarely generate a complete, day-wise itinerary automatically, forcing users to manually organize schedules. As a result, the current travel planning approach is time-consuming, inefficient, and lacks intelligent, data-driven personalization.

IV. DE-MERITS OF EXISTING SYSTEM

- Existing travel planning systems require users to manually search multiple platforms, making the process time-consuming.
- Most current systems provide generic recommendations that do not fully match individual user preferences.
- Existing platforms lack automatic generation of complete, day-wise travel itineraries.
- Many systems do not adapt to real-time factors such as weather changes or schedule variations.
- Travel planning accuracy depends heavily on the user's experience and ability to analyze information.
- Limited personalization in existing systems leads to inefficient planning and lower user satisfaction.

V. PROPOSED SYSTEM

The proposed system introduces an AI-based Travel Itinerary Recommendation System that automates the process of travel planning by generating personalized, day-wise itineraries based on user inputs. Instead of relying on manual



International Journal of Innovative Research in Computer and Communication Engineering (IJIRCCCE)

(A Monthly, Peer Reviewed, Refereed, Scholarly Indexed, Open Access Journal)

searches, the system allows users to enter basic details such as destination, travel dates, duration, and budget through a web-based interface. These inputs are processed using data science techniques and passed to an intelligent recommendation engine that utilizes Natural Language Processing and machine learning models to generate structured travel plans. The system adapts recommendations according to user constraints and integrates real-time contextual information such as weather to improve feasibility. By providing automated, personalized, and data-driven itineraries, the proposed system reduces planning effort, improves accuracy, and enhances the overall travel experience. This approach enables efficient decision-making and offers a scalable solution that can be further extended with advanced features such as cost prediction, hotel recommendations, and collaborative trip planning.

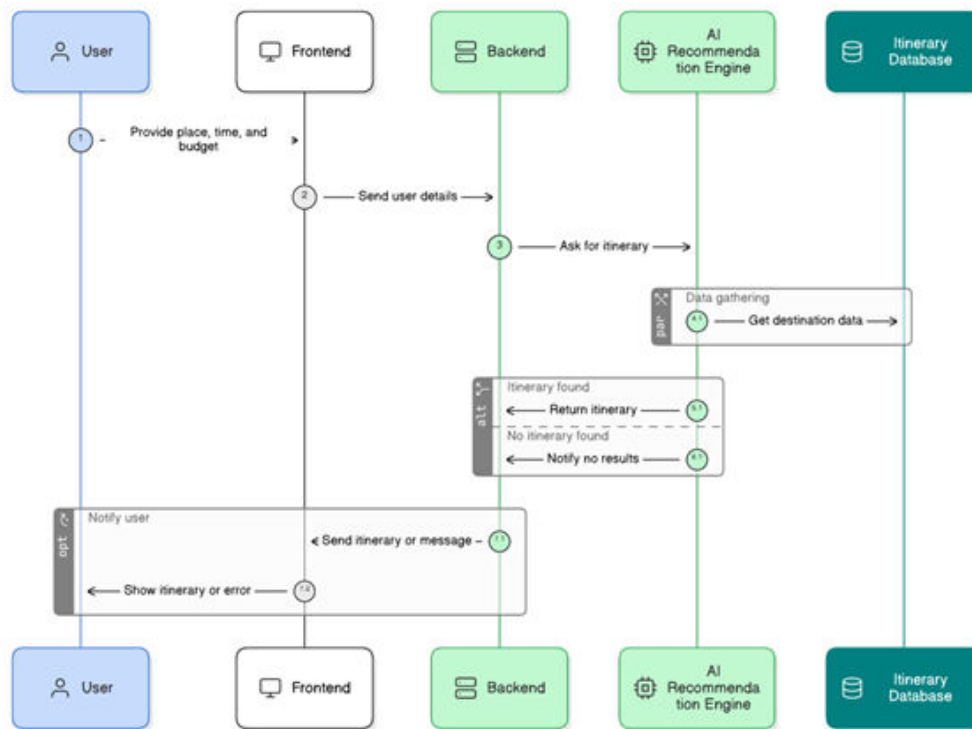


Fig 5.1 : Proposed System Diagram

User:

Provides travel details such as destination, travel time, and budget.

Frontend:

Collects user inputs through the interface and sends them to the backend.

Backend:

Receives user details, processes inputs, and communicates with the AI engine.

AI Recommendation Engine:

Generates a personalized travel itinerary based on user inputs.

Itinerary Database:

Stores and retrieves itinerary-related data when required.

Data Gathering:

Fetches destination-related information needed for itinerary generation.

Return Itinerary:

Sends the generated itinerary back to the backend if available.

Send Itinerary:

Backend forwards the itinerary or error message to the frontend.

Output Display:

Frontend displays the generated itinerary or error message to the user.



International Journal of Innovative Research in Computer and Communication Engineering (IJIRCCCE)

(A Monthly, Peer Reviewed, Refereed, Scholarly Indexed, Open Access Journal)

VI. METHODOLOGY

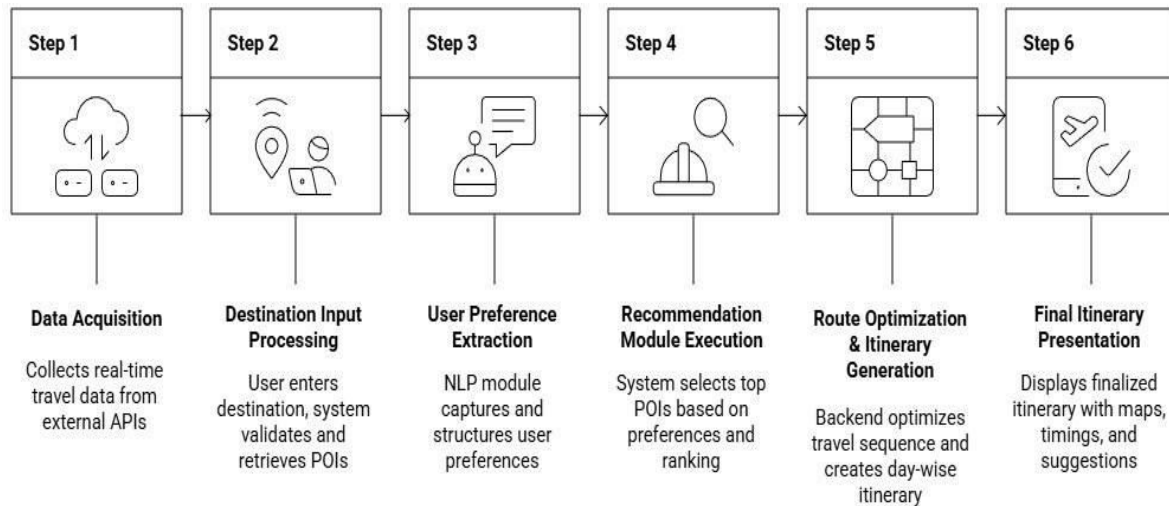


Fig 6.1 : Methodology Diagram

The proposed system covers a complete, end-to-end Machine Learning pipeline that will ensure the accuracy, reliability, and practical usability of the prediction of the outcome of student placement.

Data Acquisition

Collects real-time travel data from external APIs and datasets.
Ensures up-to-date information on places, routes, and availability.

Destination Input Processing

User enters the destination and basic travel details.
System validates input and retrieves relevant points of interest (POIs).

User Preference Extraction

NLP module analyzes user inputs to understand preferences.
Preferences like budget, interests, and duration are structured for processing.

Recommendation Module Execution

System ranks and selects POIs based on user preferences.
Personalized recommendations are generated using scoring algorithms.

Route Optimization & Itinerary Generation

Backend optimizes travel routes to minimize time and effort.
Creates a day-wise itinerary with an efficient visit sequence.

Final Itinerary Presentation

Displays the finalized itinerary in a user-friendly format.
Includes maps, timings, and personalized travel suggestions.



International Journal of Innovative Research in Computer and Communication Engineering (IJIRCCCE)

(A Monthly, Peer Reviewed, Refereed, Scholarly Indexed, Open Access Journal)

VII. RESULTS

Create Account
Join thousands of travelers planning smarter trips

First Name: John
Last Name: Doe

Username *
@ Choose a username

Email Address *
you@example.com

Password *
Create a strong password

Confirm Password *
Confirm your password

Create Account

Already have an account? Sign in

Fig 7.1: Registration Page

Welcome Back!
Sign in to continue your travel planning journey

Username
Enter your username

Password
Enter your password

Remember me [Forgot password?](#)

Sign in

Or continue with

Google Facebook

Don't have an account? [Create a free account](#)

Fig 7.1: Login Page



International Journal of Innovative Research in Computer and Communication Engineering (IJIRCCE)

(A Monthly, Peer Reviewed, Refereed, Scholarly Indexed, Open Access Journal)

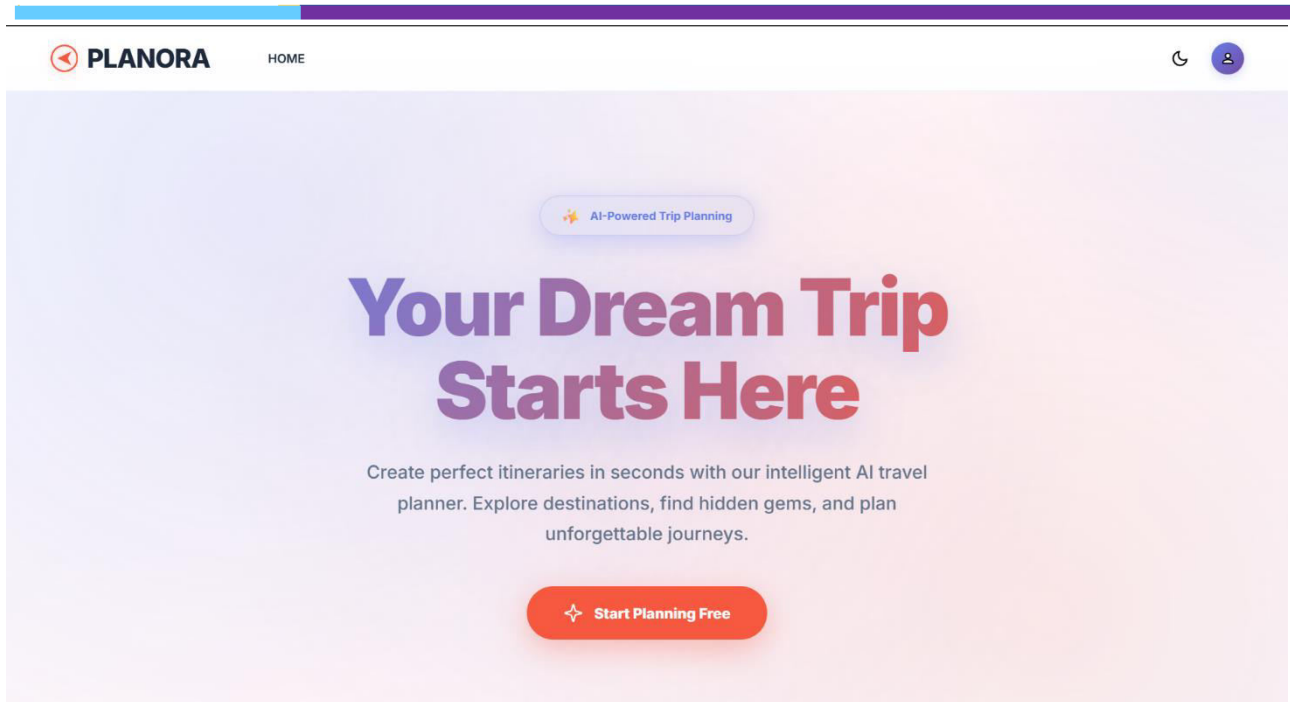


Fig 7.3 : Home Page

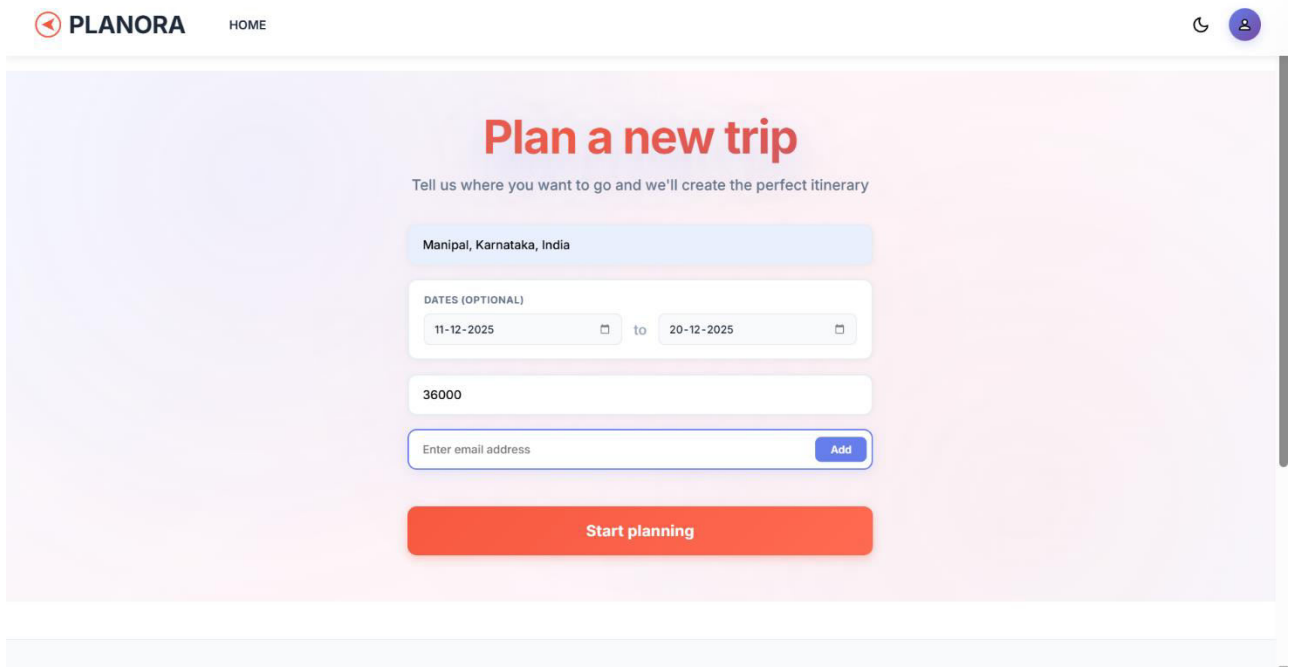


Fig 7.4 : Input Page



International Journal of Innovative Research in Computer and Communication Engineering (IJIRCCCE)

(A Monthly, Peer Reviewed, Refereed, Scholarly Indexed, Open Access Journal)

PLANORA HOME HOTELS

Manipal, Karnataka, India

A wonderful destination awaits you!

Trip Overview

Your personalized travel experience awaits

DURATION 10 days	DATES 2025-12-11 - 2025-12-20
CURRENT WEATHER 28°C Clear Sky Feels like 28°C • Humidity 45%	BUDGET 36000

Day-wise Itinerary

Planora Assistant
Your personal travel guide. Ask me anything about Manipal, Karnataka, India

Hello! 🌟 I'm your AI travel assistant. How can I help you plan your Goa trip today? I can help with:

- Local food recommendations 🍽️
- Hidden gems to visit 📍
- Transport tips 🚗

Type your message here...

Fig 7.5: Output Page

DAY 1 Arrival Day

MORNING
Arrive at Mangalore International Airport and take a taxi or bus to Manipal

AFTERNOON
Check-in to the hotel and freshen up, visit the Manipal Lake and take a stroll around the campus

EVENING
Explore the manipal market and try some local street food

FOOD RECOMMENDATION
Try the famous Masala Dosa at the manipal food court

LOCAL TIPS
Bargain while shopping at the local market

DAY 2 Beach Day

MORNING
Visit the Malpe Beach, enjoy the sunrise and take a dip in the ocean

AFTERNOON
Try water sports like surfing, kayaking or paddle boating

EVENING
Watch the sunset at the beach and enjoy the local seafood

FOOD RECOMMENDATION
Try the fresh fish fry at the beach side restaurant

LOCAL TIPS
Be careful while swimming as the currents can be strong

Fig 7.6 : Itinerary Generated



International Journal of Innovative Research in Computer and Communication Engineering (IJIRCCE)

(A Monthly, Peer Reviewed, Refereed, Scholarly Indexed, Open Access Journal)

The result pages of the project demonstrate a complete and user-friendly AI-powered travel planning system. Users can securely register and log in to access personalized features, after which they are guided to a home page that introduces the platform and its capabilities. The trip input page collects essential travel details such as destination, dates, budget, and tripmate emails, which are then processed by the system. A trip overview page summarizes the key information along with current weather details, giving users a clear snapshot of their plan. The system also integrates an interactive map and an AI assistant to provide real-time guidance, local recommendations, and travel tips. Finally, a detailed day-wise itinerary is generated, organizing activities into morning, afternoon, and evening sessions with food suggestions and local tips, showcasing the effectiveness of AI in delivering personalized and well-structured travel plans.

VIII. CONCLUSION AND FUTURE SCOPE

This project highlights the effective use of artificial intelligence in simplifying and enhancing the travel planning process. By allowing users to provide basic inputs such as destination, travel dates, and budget, the system intelligently generates a personalized, day-wise itinerary that includes activities, food recommendations, local tips, and weather insights. The integration of an AI recommendation engine, interactive maps, and a conversational assistant ensures that users receive accurate, relevant, and easy-to-understand travel plans without manual research. Overall, the project demonstrates how AI-driven systems can save time, reduce planning effort, and improve the overall travel experience by delivering customized and user-friendly solutions.

There is significant potential to further enhance this system in the future. With access to larger and richer datasets, the recommendation engine can be improved to provide even more personalized itineraries based on user preferences, travel history, and real-time trends. Advanced machine learning techniques can be incorporated to dynamically adjust itineraries based on weather changes, crowd levels, or budget fluctuations. The system can also be expanded to include hotel and transport booking, expense tracking, and multi-city trip planning. Additionally, developing a mobile application with voice input and real-time notifications would make the platform more accessible and interactive. With continued development, integration of external APIs, and user feedback, this project can evolve into a comprehensive AI-powered travel companion suitable for real-world deployment.

REFERENCES

- [1] Collaborative Filtering for AI-Powered Itinerary Planning, Journal of AI Applications, 2022.
- [2] R. Deshmukh, S. Kulkarni, and A. Patil, AI-Powered Travel Planner: A Smart Solution for Personalized and Efficient Travel Itineraries, International Journal of Computer Applications, 2023.
- [3] P. Patel and M. Shah, AI-Based Recommendation System for Travel Planning, International Journal of Advanced Research in Computer Science, 2022.
- [4] S. Singh, A. Sharma, and V. Mehta, A Review on AI-Driven Travel Planning Applications, International Journal of Innovative Research in Technology, 2021.
- [5] Research papers on NLP and Recommendation Systems
- [6] [OpenWeather API Documentation](#)
- [7] [Google Maps API Documentation](#)
- [8] [Google Places API Documentation](#)



INTERNATIONAL
STANDARD
SERIAL
NUMBER
INDIA



INTERNATIONAL JOURNAL OF INNOVATIVE RESEARCH

IN COMPUTER & COMMUNICATION ENGINEERING

 9940 572 462  6381 907 438  ijircce@gmail.com



www.ijircce.com

Scan to save the contact details