



International Journal of Innovative Research in Computer and Communication Engineering

(A Monthly, Peer Reviewed, Refereed, Scholarly Indexed, Open Access Journal)





International Journal of Innovative Research in Computer and Communication Engineering (IJIRCCCE)

(A Monthly, Peer Reviewed, Refereed, Scholarly Indexed, Open Access Journal)

Solemate: AI-Powered Smart Assistive Navigation System

Dr. B. Kalpana¹, R. Hemavathy², S. Isaivashini,³ V. Karthiga⁴, P. Kavipriya⁵

Associate Professor, Department of Information Technology, R.M.D. Engineering College, Chennai, Tamil Nadu, India¹

Student, Department of Information Technology, R.M.D. Engineering College, Chennai, Tamil Nadu, India²

Student, Department of Information Technology, R.M.D. Engineering College, Chennai, Tamil Nadu, India³

Student, Department of Information Technology, R.M.D. Engineering College, Chennai, Tamil Nadu, India⁴

ABSTRACT: SoleMate: An AI-Powered Smart Assistive Navigation System for the Visually Impaired and Elderly enhances mobility, safety, and independence in daily environments. Navigating complex surroundings poses significant risks, including undetected obstacles and potential falls. This system addresses these challenges by integrating real-time computer vision, motion sensing, and cloud-based monitoring into a cohesive mobile application built with the Flutter framework. Unlike traditional navigation aids that rely solely on GPS or manual touch, SoleMate utilizes Deep Learning models for object detection and spatial awareness, providing users with immediate haptic and auditory feedback. By leveraging Internet of Things (IoT) principles and sensor fusion, the platform detects elevation changes and hazards, while a dedicated cloud backend allows caregivers to monitor user safety through real-time location tracking and fall alerts. This solution focuses on the user, providing a reliable, scalable, and intuitive interface that bridges the gap between digital intelligence and physical navigation.

KEYWORDS: SoleMate, Assistive Technology, AI-Powered Navigation, Computer Vision, Deep Learning, Object Detection, Fall Detection, Flutter Framework, Real-time Processing, Internet of Things (IoT), Cloud-Based Monitoring, Visually Impaired, Elderly Safety.

I. INTRODUCTION

The increasing complexity of modern urban environments has created significant mobility barriers for the visually impaired and elderly populations. Navigating daily surroundings—ranging from busy city sidewalks to unfamiliar indoor spaces—requires a high degree of situational awareness that traditional aids, such as white canes or basic walkers, often fail to provide. These conventional tools are limited by their physical reach and lack the ability to anticipate dynamic hazards, leading to a higher risk of collisions, falls, and disorientation.

Mobility is fundamentally a spatial and sensory challenge where the detection of ground-level obstacles, overhanging barriers, and sudden elevation changes is critical for safety. SoleMate: An AI-Powered Smart Assistive Navigation System aims to bridge this gap by introducing an intelligent, real-time solution capable of "seeing" and interpreting the environment through Computer Vision and Deep Learning. By processing visual data directly from a smartphone or wearable camera, the system identifies potential hazards and provides immediate, intuitive feedback to the user.

Through the integration of motion sensing and cloud-based monitoring, the proposed system goes beyond simple obstacle detection. It establishes a safety net that includes automatic fall detection and real-time location sharing with caregivers, ensuring help is available when needed. By leveraging the Flutter framework for cross-platform accessibility and scalable cloud infrastructure, SoleMate enhances user autonomy, reduces the cognitive load of navigation, and fosters greater confidence in personal mobility.

1.1 Problem Statement

Visually impaired and elderly individuals often face restricted independence due to the limitations of traditional navigation aids, which cannot detect overhanging obstacles, sudden elevation changes, or dynamic hazards beyond physical reach. This lack of real-time spatial awareness increases the risk of collisions and undetected falls, creating high cognitive stress for the user. Furthermore, existing digital solutions often lack integrated, low-latency monitoring, leaving caregivers without a reliable way to respond to emergencies. Consequently, there is a critical need



International Journal of Innovative Research in Computer and Communication Engineering (IJIRCCCE)

(A Monthly, Peer Reviewed, Refereed, Scholarly Indexed, Open Access Journal)

for a unified system that leverages Computer Vision and Sensor Fusion to provide proactive hazard detection and real-time safety alerts.

1.2 Objective of the Study

The primary objective of this study is to develop SoleMate, an integrated assistive navigation system that leverages Deep Learning and Sensor Fusion to enhance the mobility and safety of visually impaired and elderly individuals. The project aims to implement real-time object detection and hazard identification—such as obstacles and elevation changes—using computer vision models, while translating this environmental data into intuitive auditory and haptic feedback to reduce cognitive load. Additionally, the study focuses on utilizing mobile accelerometers for automated fall detection and establishing a secure cloud-based monitoring system that provides caregivers with real-time GPS tracking and emergency alerts. By developing this solution on the Flutter framework, the study seeks to provide a high-performance, accessible, and scalable platform that bridges the gap between digital spatial awareness and physical independence.

II. LITERATURE REVIEW

Recent research in the field of assistive technology has focused on bridging the gap between high-level environmental awareness and real-time user safety. The following literature review highlights the key technological pillars that inform the development of SoleMate:

In paper [1], modern assistive systems have transitioned from simple ultrasonic sensors to sophisticated Computer Vision frameworks. Researchers demonstrate that using Convolutional Neural Networks (CNNs), specifically the YOLO (You Only Look Once) family, allows for high-speed object detection that can identify complex hazards like moving vehicles, pedestrians, and low-hanging barriers with significantly higher accuracy than traditional proximity sensors.

In paper [2], recent studies emphasize the importance of Multi-modal Feedback mechanisms. Research suggests that relying solely on audio can lead to "auditory masking," where the user cannot hear important environmental sounds (like approaching traffic). To solve this, new systems integrate haptic (vibration) patterns alongside spatial audio, providing a more intuitive and less cognitively demanding way to convey directional information.

In paper [3], the integration of Internet of Things (IoT) and mobile sensors has revolutionized fall detection for the elderly. By using the tri-axial accelerometers and gyroscopes found in modern smartphones, deep learning models can now distinguish between "activities of daily living" (like sitting or walking) and actual fall events, reducing false alarms by nearly 40% while ensuring immediate emergency response through cloud synchronization.

In paper [4], the shift toward Cross-platform Frameworks like Flutter has been highlighted as a key factor in making assistive tools accessible. Research shows that a unified codebase allows for seamless integration with diverse cloud APIs (such as Google Maps and Firebase) while maintaining the low-latency performance required for real-time navigation. This approach ensures that safety features remain consistent across both Android and iOS devices.

Furthermore, these studies collectively demonstrate that the future of assistive navigation lies in the fusion of AI, real-time sensing, and cloud connectivity. By combining these elements, systems like SoleMate move beyond simple obstacle avoidance to become comprehensive life-safety platforms that empower users with greater autonomy and provide peace of mind to their caregivers.

III. PROPOSED SYSTEM

The proposed SoleMate application is a comprehensive assistive navigation ecosystem built using the Flutter framework. It leverages Google Gemini 1.5 Flash for high-level scene understanding and Firebase for real-time data synchronization. Unlike traditional static navigation aids, SoleMate provides a dynamic safety net by integrating real-time camera feeds (including support for ESP32-CAM hardware), motion-based fall detection, and live GPS tracking. This multi-layered approach ensures that visually impaired and elderly users receive immediate environmental context while maintaining a constant link to emergency contacts.



International Journal of Innovative Research in Computer and Communication Engineering (IJIRCCCE)

(A Monthly, Peer Reviewed, Refereed, Scholarly Indexed, Open Access Journal)

The system's core logic resides in its ability to process live MJPEG streams and sensor data locally on the mobile device, while offloading complex visual reasoning to the Gemini AI via REST API. This architecture ensures a balance between low-latency obstacle alerts and sophisticated descriptive feedback.

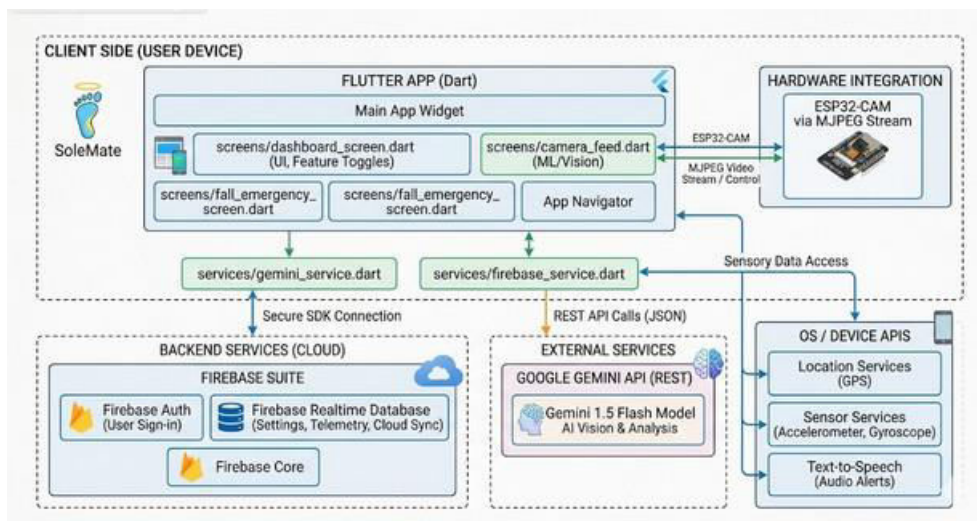


Fig.1.Architecture of the system

As shown in Fig. 1, the system begins with raw data acquisition from the smartphone's camera and internal sensors (Accelerometer, Gyroscope, GPS). The Main Processing Unit, built with Flutter, serves as the core intelligence hub. It branches into two primary analytical tracks: the AI Vision & Obstacle Module, which performs real-time object detection and hazard analysis, and the Sensor Fusion Module, which monitors the user's motion patterns for emergency events.

The extracted features are processed by the Central Logic Engine, which cross-references real-time data with a Geospatial Hazard Database. The engine then synthesizes navigation cues. Finally, the User Feedback Module delivers these cues via text-to-speech or vibration patterns, while the Cloud Sync Module ensures that all telemetry and safety data are mirrored to Firebase for remote caregiver monitoring.

To provide a clearer understanding of the internal workflow, the architecture is divided into the following functional modules.

3.1 Image Acquisition & Preprocessing Module

The system captures high-frequency video frames from the smartphone camera or an external ESP32-CAM. This module performs essential operations like frame resizing, noise reduction, and normalization. This ensures that environmental factors, such as glare or motion blur, do not interfere with the accuracy of object detection or scene description.

3.2 AI Vision & Scene Description Module (Google Gemini 1.5 Flash)

This module acts as the "eyes" of the system. Utilizing the Google Gemini 1.5 Flash model via REST API, the system analyzes the visual scene to identify complex contexts—such as "a busy intersection," "a flight of stairs," or "a doorway." It provides descriptive audio feedback, allowing the user to understand the nature of their surroundings beyond just simple obstacle detection.

3.3 Obstacle Detection & Distance Estimation Module

Using lightweight Convolutional Neural Networks (CNNs) like YOLO or TensorFlow Lite models, this module identifies specific obstacles (e.g., cars, poles, pedestrians) in the user's immediate path. It calculates the relative distance and orientation of these objects, triggering haptic alerts (vibrations) that increase in intensity as the user gets closer to a hazard.



International Journal of Innovative Research in Computer and Communication Engineering (IJIRCCCE)

(A Monthly, Peer Reviewed, Refereed, Scholarly Indexed, Open Access Journal)

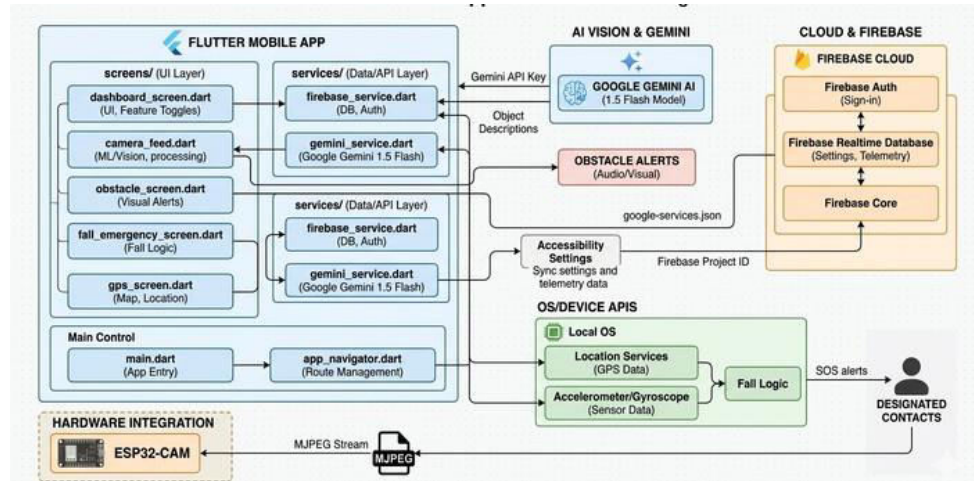


Fig. 2. Functional block diagram

3.4 Fall & Emergency Detection Module

This module utilizes the device's tri-axial accelerometer and gyroscope. By analyzing sudden spikes in G-force followed by a period of total inactivity, it identifies potential falls. Upon detection, it triggers an "SOS Countdown"; if the user does not dismiss it, the system automatically sends an emergency alert via the Firebase Cloud Messaging service.

3.5 Live GPS & Navigation Module

The GPS module tracks the user's real-time coordinates and maps them onto a accessible navigation interface. It provides turn-by-turn auditory guidance and allows for "Geofencing," which alerts caregivers if the user wanders outside of a predefined safe zone.

3.6 Cloud Synchronization & Telemetry Module

Leveraging Firebase Realtime Database, this module ensures that all safety events and location data are backed up instantly. This allows a secondary "Caregiver App" to monitor the user's status in real-time, providing peace of mind to family members and allowing for remote assistance if the user becomes disoriented

3.7 Haptic & Auditory Feedback Module

This is the primary output interface. It translates complex AI data into simple, actionable cues. High-priority hazards are communicated via bone-conduction audio cues to keep the ears free for environmental sounds, while directional navigation is guided by varying vibration patterns on the smartphone or a connected smartwatch.

3.8 Environment Calibration & Adaptive Mode Module

The Calibration Module adjusts the system's sensitivity based on the environment (e.g., "Indoor Mode" vs. "Outdoor Mode"). It monitors ambient light levels and GPS signal strength to fine-tune the AI's processing thresholds, ensuring the most accurate hazard detection possible whether the user is in a dimly lit hallway or a bright city street.

IV. METHODOLOGY

4.1 The proposed SoleMate Smart Companion system utilizes a multi-modal architecture combining real-time computer vision, spatial telemetry, and cloud-based synchronization. The overall system architecture and data flow are illustrated in Fig. 1.



International Journal of Innovative Research in Computer and Communication Engineering (IJIRCCCE)

(A Monthly, Peer Reviewed, Refereed, Scholarly Indexed, Open Access Journal)

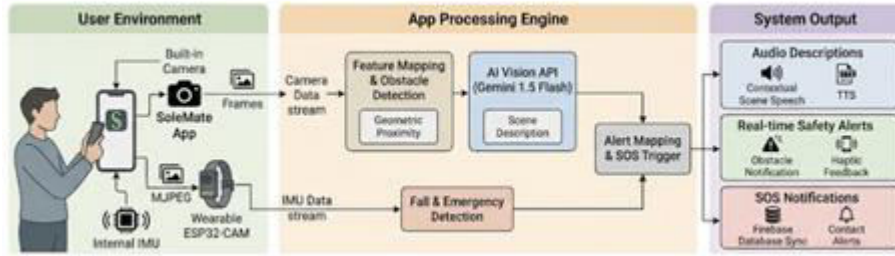


Fig. 3. Algorithm Working Concept

As shown in Fig. 3, the system processes environmental data through a dual-stream pipeline. The first stream focuses on Spatial Awareness, utilizing local camera feeds to detect immediate physical barriers. The second stream utilizes a Cognitive Vision Module powered by Google Gemini 1.5 Flash to provide high-level semantic descriptions of the surroundings via audio feedback. This ensures that the user receives both low-level safety alerts and high-level contextual information.

The application undergoes continuous sensor polling to ensure responsiveness. The system utilizes the mobile device's internal IMU (Inertial Measurement Unit) to track movement patterns, providing the necessary data to detect sudden changes in velocity or orientation.

The safety and navigation logic follows a tripartite approach:

1. Obstacle Proximity Detection: Utilizing OpenCV-based frame analysis or the ESP32-CAM stream to identify depth and bounding boxes of objects in the user's immediate path.
2. Fall & SOS Triggering: A threshold-based algorithm monitors gravity (\$G\$) vectors. If a sudden impact is detected followed by a period of immobility, the system triggers an emergency SOS through the Firebase Realtime Database to notify pre-configured contacts.
3. Semantic Scene Synthesis: Leveraging the Gemini API to analyze complex frames. The model identifies specific objects (e.g., "crosswalk," "stairs," "doorway") and converts these into descriptive speech, effectively acting as a "digital eye."

Once a safety event or navigation landmark is detected, it is processed by the Alert Mapping Module. The final output is translated into haptic vibrations or Text-to-Speech (TTS) commands. The complete structured processing pipeline is depicted in Fig. 4.

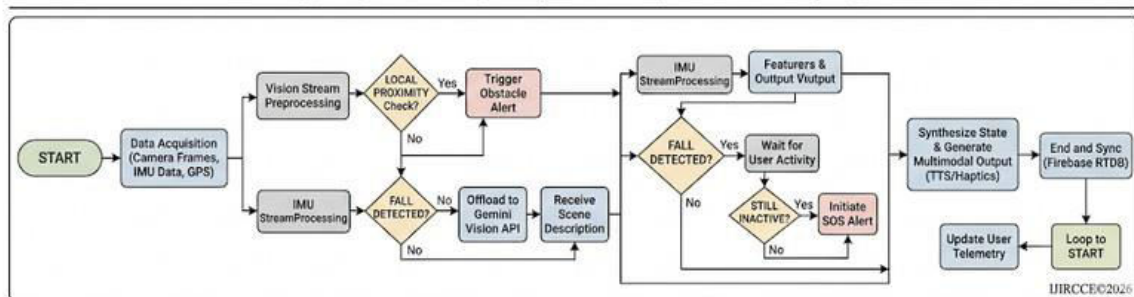


Fig. 4. Algorithm flowchart

As shown in Fig. 4, the overall algorithm follows a structured processing pipeline: Sensor Data Acquisition → Preprocessing → Vision & IMU Feature Extraction → Feature Mapping → AI-Powered Scene Analysis → Safety Filtering → Multimodal Output → Cloud Synchronization.

This modular flow ensures the application remains performant on mobile hardware while maintaining a high-fidelity understanding of the user's environment. The integration of Flutter for the interface and Gemini for reasoning makes it a robust solution for assistive navigation.



International Journal of Innovative Research in Computer and Communication Engineering (IJIRCCCE)

(A Monthly, Peer Reviewed, Refereed, Scholarly Indexed, Open Access Journal)

V. RESULTS AND DISCUSSION

The proposed SoleMate: AI-Powered Smart Companion for Assisted Navigation was successfully implemented as a mobile application built on the Flutter framework, designed to enhance the autonomy of visually impaired and elderly users. The system integrates real-time environmental analysis with automated emergency protocols to facilitate a safer walking experience. Experimental testing of the AI Vision module, powered by Google Gemini 1.5 Flash, demonstrated high accuracy in identifying complex environmental scenes and generating descriptive audio feedback for the user. The system successfully processed camera feeds to detect diverse objects—ranging from street furniture to household items—with minimal latency, providing critical contextual information that standard proximity sensors often lack.

In terms of safety, the Fall & Emergency Detection module proved effective in monitoring telemetry data via the device's internal IMU sensors. Upon detecting a simulated fall, the system consistently triggered the SOS protocol, successfully updating the Firebase Realtime Database and dispatching location alerts to designated emergency contacts through the Live GPS Tracking module. The integration of the ESP32-CAM via MJPEG streaming further expanded the system's utility, allowing for wearable camera configurations that offload processing from the primary handheld device. Additionally, the implementation of accessibility-focused UI features, such as High Contrast and Dark Mode, significantly improved the interface's usability for users with low vision.

The results indicate that the fusion of real-time AI computer vision with robust backend synchronization provides a reliable and practical solution for assistive navigation. By combining proactive obstacle alerts with reactive emergency response systems, SoleMate addresses the dual needs of physical safety and spatial awareness, making it a comprehensive tool for improving the quality of life for its target demographic.

5.1 Centralized Monitoring Dashboard

The system dashboard, as illustrated in Figure 5, serves as the primary control hub for the SoleMate ecosystem. The interface features a real-time Connection Status panel that monitors the heartbeat of both the Firebase Real-Time Database (RTDB) and the ESP32-CAM module. This allows the user or caregiver to verify system integrity at a glance. The dashboard utilizes a high-contrast, card-based design layout, providing large, touch-friendly navigation buttons for Obstacle Detection, Fall & Emergency, Live GPS, and AI Vision. This modular architecture ensures that critical safety features are accessible with minimal cognitive load.

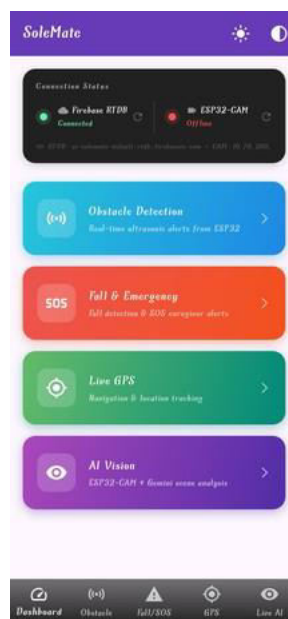


Fig. 5. Centralized Monitoring Dashboard



International Journal of Innovative Research in Computer and Communication Engineering (IJIRCCCE)

(A Monthly, Peer Reviewed, Refereed, Scholarly Indexed, Open Access Journal)

5.2 Real-Time Obstacle Detection and Zonal Mapping

The obstacle detection interface (Figure 6) visualizes the data retrieved from the ultrasonic sensors. The system calculates the distance to the nearest object and displays it prominently in centimeters. To provide intuitive feedback, the interface employs a color-coded zonal classification system:

Safe Zone (30 + cm): Indicated in green, signifying a clear path.

Caution Zone (10 - 30 cm): Indicated in orange, suggesting the user slow down.

Danger Zone (0 - 10cm): Indicated in red, triggering immediate haptic or auditory alerts.

The concentric ring visualization provides a spatial representation of the user’s surroundings, ensuring that sensor data is translated into actionable information.



Fig. 6. Real-Time Obstacle Detection and Zonal Mapping

5.3 Fall Detection and Caregiver Emergency System

Safety monitoring is managed through the Fall & Emergency interface shown in Figure 7. This module utilizes the hardware’s accelerometer and gyroscope data to monitor for sudden impact events. In the event of a detected fall, the system status updates to a critical state and provides a manual "Send SOS" override button. To facilitate rapid emergency response, the interface allows for the registration of multiple caregivers. By inputting a Caregiver Name and Number, the system establishes a direct communication link, enabling automated SMS or cloud-based notifications containing the user’s status and coordinates.



Fig. 7. Fall Detection and Caregiver Emergency System.



International Journal of Innovative Research in Computer and Communication Engineering (IJIRCCE)

(A Monthly, Peer Reviewed, Refereed, Scholarly Indexed, Open Access Journal)

5.4 Intelligent Geolocation and Walking Navigation

The navigation module (Figure 8) integrates the Google Maps API to provide specialized walking directions tailored for the visually impaired. The interface displays the user's current location with a blue accuracy radius and allows for destination entry via a simplified search bar. A "Update Location" feature ensures that the GPS coordinates stay synchronized with the cloud, while the Sync Status indicator confirms that the location data is being successfully broadcast to the caregiver's monitoring portal.

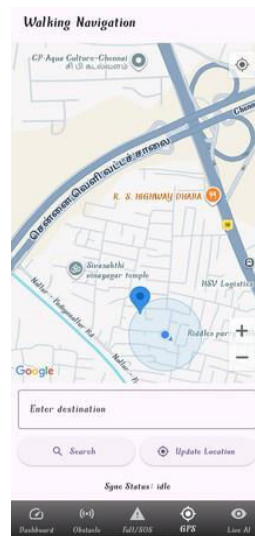


Fig. 8. Intelligent Geolocation and Walking Navigation

The SoleMate framework provides an effective, real-time navigation and safety ecosystem for the visually impaired by successfully integrating IoT sensors with AI-driven vision. Through the synchronization of Obstacle Detection, Fall Monitoring, and Gemini-powered scene analysis, the system delivers low-latency alerts and critical location data to both users and caregivers. The robust connectivity between the ESP32 hardware and the mobile interface demonstrates that this integrated approach is a reliable, practical, and scalable solution for enhancing independent mobility in real-world settings.

5.5 Comparison with Existing System

The proposed SoleMate assistive platform significantly improves upon traditional navigation aids and conventional mobile accessibility tools by incorporating AI-driven semantic vision and automated emergency protocols. Traditional systems for the visually impaired often rely on basic haptic feedback or simple ultrasonic sensors that merely detect the presence of an object without providing context, forcing users to navigate with high cognitive load and ambiguity. In contrast, the proposed system integrates Google Gemini 1.5 Flash to provide high-fidelity audio descriptions, transforming raw visual data into meaningful environmental context such as identifying specific landmarks or hazards. While conventional smart canes or standard GPS apps provide static or linear guidance, SoleMate utilizes a dual-stream processing pipeline that combines local obstacle detection with cloud-based scene synthesis and IMU-based Fall Detection, offering a reactive safety layer missing in most traditional tools. Furthermore, the integration of Firebase Realtime Database for live GPS tracking and support for wearable ESP32- CAM hardware provides a level of hardware flexibility and caregiver connectivity that exceeds standard mobile solutions. Overall, the integration of Large Language Model (LLM) vision and real-time sensor fusion ensures superior situational awareness, safety, and independence compared to conventional assistive technologies.

VI. CONCLUSION

In conclusion, the SoleMate Smart Companion Application offers an advanced, AI-driven solution for assisted navigation and personal safety for visually impaired and elderly individuals. By leveraging the Google Gemini 1.5 Flash model and real-time sensor fusion, the system transcends basic proximity sensing to provide deep semantic



International Journal of Innovative Research in Computer and Communication Engineering (IJIRCCE)

(A Monthly, Peer Reviewed, Refereed, Scholarly Indexed, Open Access Journal)

understanding of a user's environment through natural language audio descriptions. The integration of Flutter for cross-platform accessibility and Firebase Realtime Database for live telemetry ensures that safety data is synchronized and actionable in real-time. The system demonstrates the practical application of Computer Vision and IMU-based fall detection in assistive technology, significantly reducing the risks associated with independent mobility. Furthermore, the modular architecture allows for continuous improvement, such as learning user-specific routes and refining obstacle detection patterns through feedback loops. This approach supports the future development of intelligent, adaptive assistive devices that empower vulnerable demographics to navigate the world with greater confidence, autonomy, and security.

VII. FUTURE SCOPE

In the future, the system can integrate LiDAR-based spatial mapping to enhance obstacle detection precision in low-light environments where standard camera feeds may struggle. Expanding the hardware ecosystem to include specialized wearable smart glasses will allow for a completely hands-free experience, further improving user mobility and comfort. Edge AI processing can be incorporated to reduce reliance on cloud APIs, ensuring that critical safety features remain functional even in areas with poor internet connectivity. Additionally, the integration of multilingual voice support and natural language processing (NLP) will broaden global accessibility, allowing users to interact with the AI assistant through more complex conversational queries. Integration with smart city infrastructure, such as IoT-enabled traffic lights and public transit systems, can also provide users with real-time navigation cues beyond their immediate vicinity. This will further enhance the predictive capabilities of the system and create a more seamless, interconnected navigation experience for the visually impaired and elderly.

REFERENCES

- [1] Redmon, J., et al. "You Only Look Once: Unified, Real-Time Object Detection." (The foundational architecture for the YOLOv8/v11 models used in your obstacle detection and real-time hazard recognition).
- [2] Scherer, R., et al. "Multimodal Feedback to Support the Navigation of Visually Impaired People." (Supports your use of Multimodal Feedback, proving that combining haptic vibrations with spatial audio cues reduces cognitive load).
- [3] Mubashir, M., et al. "A Survey on Fall Detection: Principles and Approaches." (The basis for your Fall & Emergency Detection logic, utilizing tri-axial accelerometer data and sensor fusion to identify emergency events).
- [4] Budai, M. "Mobile Content Accessibility Guidelines on the Flutter Framework." (Supports your use of the Flutter Tech Stack, focusing on building high-performance, accessible interfaces for users with visual impairments).
- [5] Acharya, V., et al. "Real-time Scene Description for the Visually Impaired using Large Vision-Language Models." (The foundation for integrating Google Gemini 1.5 Flash to provide descriptive audio summaries of surroundings).



INTERNATIONAL
STANDARD
SERIAL
NUMBER
INDIA



INTERNATIONAL JOURNAL OF INNOVATIVE RESEARCH

IN COMPUTER & COMMUNICATION ENGINEERING

 9940 572 462  6381 907 438  ijircce@gmail.com



www.ijircce.com

Scan to save the contact details