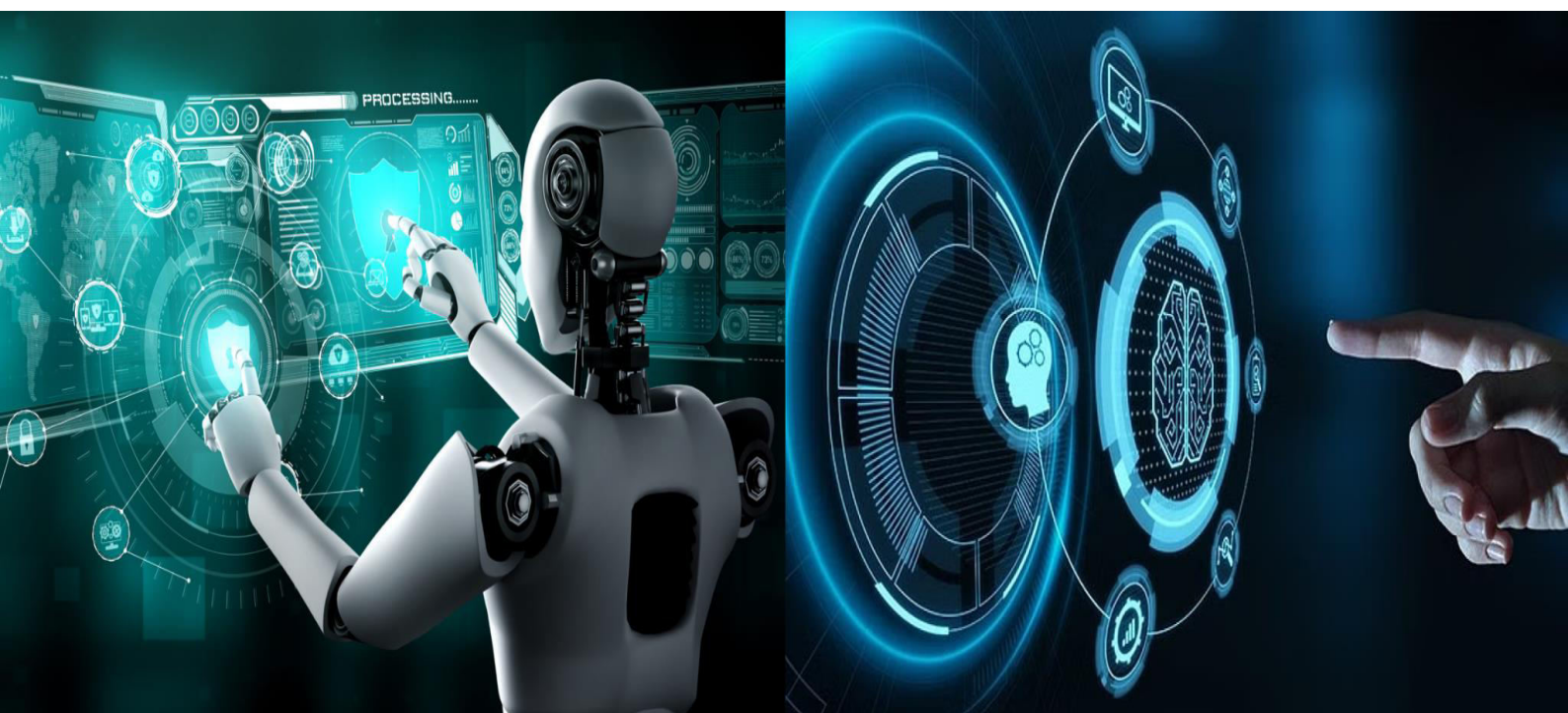


# International Journal of Innovative Research in Computer and Communication Engineering

(A Monthly, Peer Reviewed, Refereed, Scholarly Indexed, Open Access Journal)



**Impact Factor: 8.625**

**Volume 13, Issue 1, January 2025**



# Survey towards Stress Level Detection using Machine Learning

**Prof. Padir J.D<sup>1</sup>, Sakshi Sanjay Kedari<sup>2</sup>, Sakshi Sanjay Dhokate<sup>3</sup>, Kulsum Ansar Pathan<sup>4</sup>**

Professor, Sau. Sundarbai Manik Adsul Polytechnic, Chas, Nagar, Ahmednagar, India<sup>1</sup>

Students, Sau. Sundarbai Manik Adsul Polytechnic, Chas, Nagar, Ahmednagar, India<sup>2,3,4</sup>

**ABSTRACT:** Psychological stress affects physiological parameters of a person. Prolonged exposure to stress can have detrimental effects which might require expensive treatments. Acute levels of stress in people who are already diagnosed with borderline personality disorder or schizophrenia, can cost them their lives. To self-manage this important health problem in the framework of smart healthcare, a Machine Learning based system (StressLysis) is proposed in this article. The learning system is trained such that it monitors stress levels in a person through human body temperature, rate of motion and sweat during physical activity. The proposed Machine Learning system has been trained with a total of 26,000 samples per dataset and demonstrates accuracy as high as 99.7 percent. The collected data are transmitted and stored in the cloud which can help in real time monitoring of a person's stress levels, thereby reducing the risk of death and expensive treatments. The proposed system has the ability to produce results with an overall accuracy of 98.3 percent to 99.7percent, is simple to implement and its cost is moderate. Stress-Lysis can not only help in keeping an individual self-aware by providing immediate feedback to change the lifestyle of the person in order to lead a healthier life but also plays a significant role in the state-of-the-art by allowing computing on the edge devices .

**KEYWORDS:** Smart Healthcare, Ambient Intelligence, Internet of Medical Things (IoMT), Stress Level Detection, Deep Neural Network (DNN).

## I. INTRODUCTION

Image Stress in humans can be classified into eustress, neustress and distress. Eustress is considered to be “good” stress and can motivate a person to elevated performance . Neutral stress is called neustress. As it does not cause any harm to the well-being of a person, it can be ignored. Stress with negative effects on the human body is called distress and is an important type of stress to focus on. Depending on its time characteristics, distress is classified into acute and chronic stress. Acute stress are short but intense levels of stress, while long term intense levels are considered as chronic stress. Chronic stress has very serious consequences on the healthy living of humans . Stress increases muscle tension and causes impairment in daily physical activity. Increase in stress levels can push a person to complex mental illnesses such as borderline personality disorder (BPD) which causes dangerous mood swings, change in behavioural patterns, eating disorders and provoke the stressed person to take unhealthy decisions. The Internet of Things (IoT) helps in creating seamless wireless health monitoring systems. Some significant IoT applications include secure surveillance systems , the smart grid, smart parking systems, smart healthcare and numerous other applications in smart cities . The “edge” IoT includes a wide range of sensors and actuators (“things”) wherein edge computations are performed. Edge computing involves intelligent processing closer to the things in order to reduce communication traffic and improve IoT response , . The edge also includes devices which collect and transmit real time data . The Internet of Medical Things (IoMT) is a particular application of the IoT consisting of primarily medical-related devices and services, such as on body sensors, smart gadgets, smart infrastructure, smart homes, emergency response, and smart hospitals, all connected through the IoT. One of the primary applications of the IoMT is real time monitoring, which leads to better emergency response, provides easy but controlled access to patient data, remote access to healthcare and connectivity among stake holders in the smart healthcare framework .





## International Journal of Innovative Research in Computer and Communication Engineering (IJIRCCE)

(A Monthly, Peer Reviewed, Refereed, Scholarly Indexed, Open Access Journal)

### II. RELATED WORK

Though consumer electronics for smart healthcare has a great potential to improve the quality of our lives, its usage is limited based on its accuracy and reliability. Research in consumer electronics for smart healthcare has been focused on assisting visually impaired individuals [2], [3], monitoring physiological signals such as Electrocardiography (ECG) [4], heart rate [5], and wearables such as wrist gadgets, rings, patches, badges, glasses, and bracelets [1]. In [5], the researchers have proposed a wrist gadget for monitoring stress level using the heart rate, which has the limitation of detecting stress level during a high intensity workout. In such scenarios, though the increase in heart rate might help in burning more calories, it cannot identify the stress level of the individual. Other stress monitoring consumer electronic wearables include the Inner Balance by Heartmath, the Spire, the WellBe, Zensorium's Being, and Tinke. They use IR blood flow sensors with breathing as a parameter, patented respiration sensors, vibration motors, optical sensors, and three-axis accelerometers with small meditation sessions and breathing exercises as remedies. However, the complexity of the design increases the overall cost of these available systems. For monitoring stress level using different types of stressors, researchers have proposed biofeedback processes integrated with gaming [6], usage of mobile phones [7], monitoring linguistic outputs of an individual [8] etc. Biomarkers for stress level detection have been identified through ECG, respiration, skin conductance, and surface electrocardiography in [9], heart rate variability in [10], continuous monitoring of ECG, impedance and acceleration of the head in [11], and functional Magnetic Resonance Imaging (fMRI) in [12]. In [13] and [14] stress level prediction is performed with a fuzzy logic controller using sweat rate, step count and temperature as the stressors. However, this proposed system had only 150 samples of data thus affecting the accuracy and increasing its complexity, as the samples have to be entered manually in the system.

### III. METHODOLOGY

#### A. Proposed Work:

In system, sensor system is used to monitor three parameters: human body temperature, sweat reduction rate and motion detection.

- The sensor inputs from the human body are received and stress analysis is done using Machine Learning and the stress detection unit.
- The stress level is classified as low, normal, and high

#### B. System Architecture

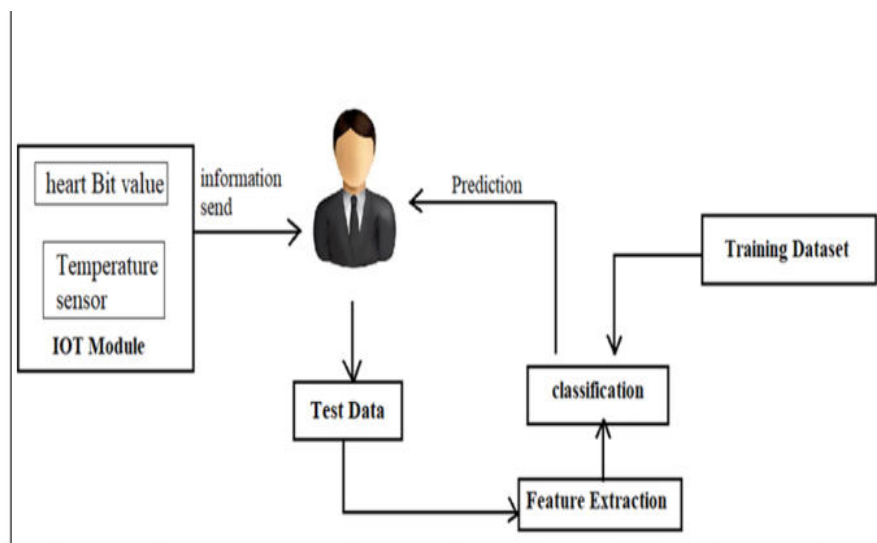


Fig: System Architecture



## International Journal of Innovative Research in Computer and Communication Engineering (IJIRCCE)

(A Monthly, Peer Reviewed, Refereed, Scholarly Indexed, Open Access Journal)

### C. Algorithms

#### 1. SVM

Input: D dataset, on-demand features, aggregation-based features,

Output: Classification of Application

for each application App-id in D do

Get on-demand features and stored on vector x for App-id

x.add ( Get-Features(app-id));

end for

for each application in x vector do

Fetch first feature and stored in b, and other features in w.

$hw, b(x) = g(z)$  here  $z = (w^T x + b)$

if ( $z > 0$ )

assign  $g(z)=1$ ;

else  $g(z)=-1$ ;

end if

end

#### 2. Decision Tree

1. Check if algorithm satisfies termination criteria

2. Computer information-theoretic criteria for all attributes

3. Choose best attribute according to the information-theoretic criteria

4. Create a decision node based on the best attribute in step

5. Induce (i.e. split) the dataset based on newly created decision node in step 4

6. For all sub-dataset in step 5, call C4.5 algorithm to get a sub-tree (recursive call)

7. Attach the tree obtained in step 6 to the decision node in step 4

8. Return tree

## IV. CONCLUSION

A system for stress detection has been developed. In addition to helping the user in achieving emotional balance, the system helps in monitoring chronic stress from early stages. A deep learning system will be developed and tested with three different datasets with sample sizes of 2000, 4000 and 20,000. The training of the system is done with 6733 framework is done in real-time with the help of available frameworks. The results when the system is tested with the training set were accuracy is calculated. The accuracy and loss plots confirm that as the sample size increases accuracy. A GUI implementation of the concept is used to represent the ease of use the system which can later be developed as a mobile application. This GUI is displayed and connected to an IoT cloud for data access and storage. The different combinations of the stress, namely low, medium and high are displayed. Low level signifies no stress. Medium level signifies presence of stress while high level signifies stress on high level and medical steps should be taken to take care of same.

## REFERENCES

1. H. Thapliyal, V. Khalus, and C. Labrado, "Stress Detection and Management: A Survey of Wearable Smart Health Devices," IEEE Consum. Electron. Mag., vol. 6, no. 4, pp. 64–69, Oct 2017.
2. S. H. Chae and M. C. Kang and J. Y. Sun and B. S. Kim and S.J. Ko, "Collision Detection Method using Image Segmentation for the Visually Impaired," IEEE Trans. Consum. Electron., vol. 63, no. 4, pp. 392–400, Nov. 2017
3. C. W. Lee, P. Chondro, S. J. Ruan, O. Christen, and E. Naroska, "Improving Mobility for the Visually Impaired: A Wearable Indoor Positioning System Based on Visual Markers," IEEE Consum. Electron. Mag., vol. 7, no. 3, pp. 12–20, May 2018.
4. N. Dey and A. S. Ashour and F. Shi and S. J. Fong and R. S. Sherratt, "Developing Residential Wireless Sensor Networks for ECG Healthcare Monitoring," IEEE Trans. Consum. Electron., vol. 63, no. 4, pp. 442–449, Nov. 2017



## International Journal of Innovative Research in Computer and Communication Engineering (IJIRCCE)

(A Monthly, Peer Reviewed, Refereed, Scholarly Indexed, Open Access Journal)

5. D. W. Ryoo and C. S. Bae and J. W. Lee, "The Wearable Wrist-Type Gadget for HealthCare based on Physiological Signals," in 2008 Digest of Technical Papers - Int. Conf. on Consum. Electron., 2008.
6. H. A. Osman, H. Dong, and A. E. Saddik, "Ubiquitous Biofeedback Serious Game for Stress Management," IEEE Access, vol. 4, pp. 1274–1286, 2016.
7. A. Sano and R. W. Picard, "Stress Recognition Using Wearable Sensors and Mobile Phones," in Proc. of Humaine Assn. Conf. on Affective Comp. and Intel. Interaction, 2013, pp. 671–676.
8. E. El-Samahy, M. Mahfouf, L. A. Torres-Salomao, and J. Anzurez-Marin, "A New Computer Control System for Mental Stress Management using Fuzzy Logic," in Proc. of IEEE Int. Conf. on Evolving and Adap. Intel. Sys. (EAIS), 2015, pp. 1–7.
9. J. Wijsman, B. Grundlehner, H. Liu, J. Penders, and H. Hermens, "Wearable Physiological Sensors Reflect Mental Stress State in Office-Like Situations," in Proc. of Humaine Assn. Conf. on Affective Comp. and Intel. Interaction, 2013, pp. 600–605.
10. J. Choi and R. Gutierrez-Osuna, "Using Heart Rate Monitors to Detect Mental Stress," in Proc. of 6th Int. Wksh. on Wearable and Implantable Body Sens. Net., 2009, pp. 219–223.
11. B. M. G. Rosa and G. Z. Yang, "Smart Wireless Headphone for Cardio-vascular and Stress Monitoring," in Proc. of IEEE 14th Int. Conf. on Wearable and Implantable Body Sens. Net. (BSN), 2017, pp. 75–78.
12. T. Xu, K. R. Cullen, A. Hourri, K. O. Lim, S. C. Schulz, and K. K. Parhi, "Classification of Borderline Personality Disorder based on Spectral Power of Resting-State fMRI," in Proc. of 36th Int. Conf. of the IEEE Eng. in Med. and Bio. Soc., 2014, pp. 5036–5039.
13. L. Rachakonda and P. Sundaravadivel and S. P. Mohanty and E. Kougianos and M. Ganapathiraju, "A Smart Sensor in the IoMT for Stress Level Detection," in Proc. of 4th IEEE Int. l Symp. on Smart Electron. Sys., 2018, pp. 141–145.
14. L. Rachakonda, P. Sundaravadivel, S. P. Mohanty, and E. Kougianos, "I-Stress: A Stress Monitoring System through the IoT," Abstract, IEEE MetroCon 2017 Conference, Arlington Convention Center, TX., October 26, 2017.





INTERNATIONAL  
STANDARD  
SERIAL  
NUMBER  
INDIA



# INTERNATIONAL JOURNAL OF INNOVATIVE RESEARCH

IN COMPUTER & COMMUNICATION ENGINEERING

 9940 572 462  6381 907 438  [ijircce@gmail.com](mailto:ijircce@gmail.com)



[www.ijircce.com](http://www.ijircce.com)

Scan to save the contact details