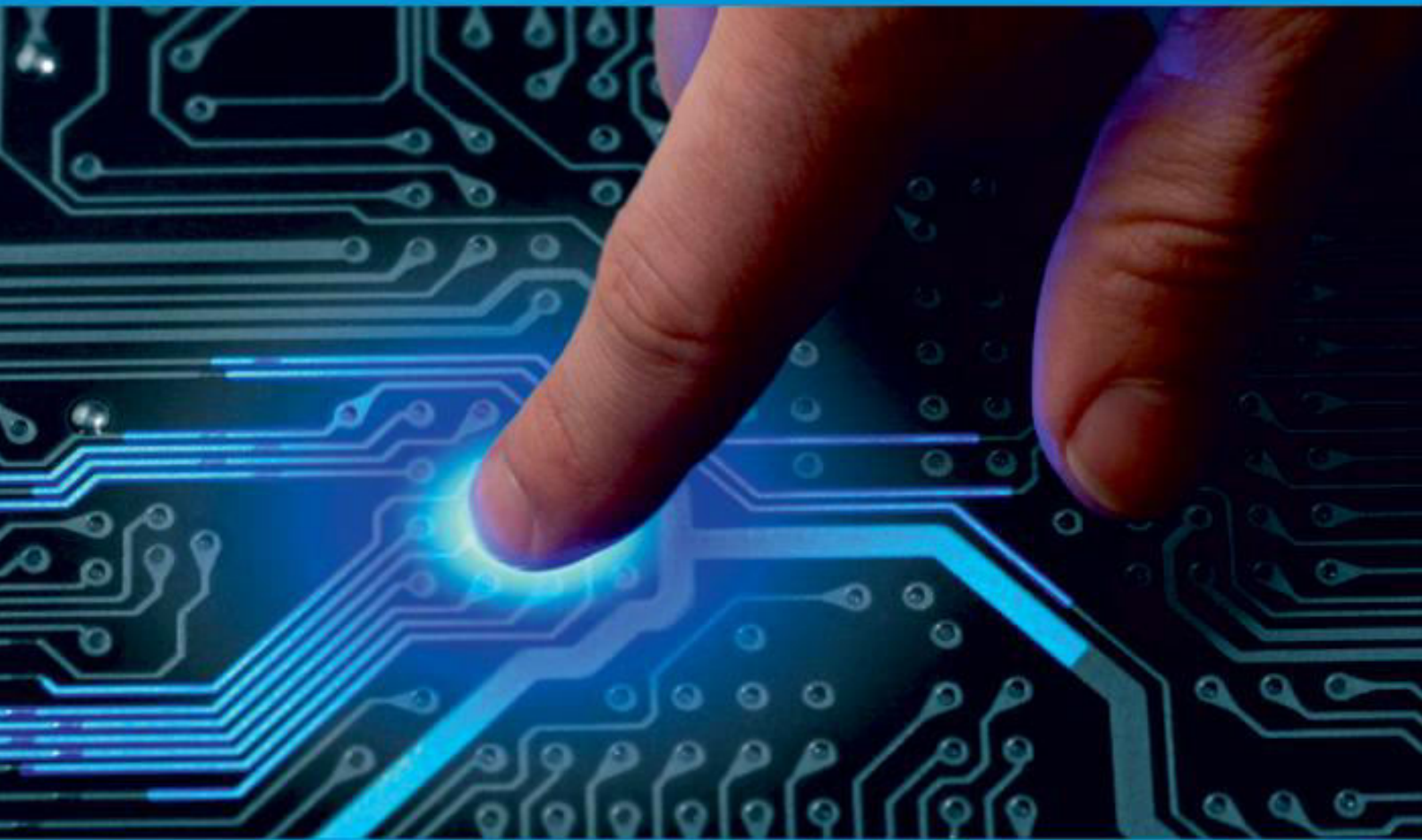




IJIRCCCE

e-ISSN: 2320-9801 | p-ISSN: 2320-9798



INTERNATIONAL JOURNAL OF INNOVATIVE RESEARCH

IN COMPUTER & COMMUNICATION ENGINEERING

Volume 12, Issue 12, December 2024

ISSN INTERNATIONAL
STANDARD
SERIAL
NUMBER
INDIA

Impact Factor: 8.625



9940 572 462



6381 907 438



ijircce@gmail.com



www.ijircce.com



International Journal of Innovative Research in Computer and Communication Engineering (IJIRCCE)

(A Monthly, Peer Reviewed, Refereed, Scholarly Indexed, Open Access Journal)

Reunion_Connect

Vedha N, A Krishna Teja Reddy, Bharath M, Hemanth Gowda M V

Assistant Professor, Department of CSE, Sri Venkateshwara College of Engineering, Vidyanagar, Bangalore, Karnataka, India

BE Students, Department of CSE, Sri Venkateshwara College of Engineering, Vidyanagar, Bangalore, Karnataka, India

ABSTRACT: The Alumni Association Platform is a dynamic digital hub through which alumni from a particular institution can connect, collaborate, and engage in meaningful ways. It is a one-stop digital landscape for networking between alumni, students, and the institution that allows for the exchange of knowledge, experiences, and opportunities. This platform, in turn, supports optimum engagement by providing an easy-to-use interface that includes personalized profiles, discussions, events calendars, and job boards, thus permitting its alumni to remain updated with the institution, engage in mentorship programs, and generally help develop the community. It improves the professional networking experience with the assistance of integrated professional development tools, skills exchanged, and partnerships. The virtual space allows the real-time display of milestones, achievements, and other shared memories, ranging from virtual meet-ups to reunions to content-sharing activities. Working on contemporary technology, the Alumni Associative Platform extends its user's bond in a lifelong community where bonds of love help institutional pride flourish, which eventually ensures sustained engagement while benefiting both the institution and its wider network.

An Alumni Associative Platform is the entire interactive digital ecosystem designed to link old students, current students, and the institution into a very lively and collaborative society. This makes it a centralized platform wherein relationships are preserved for life, where alumni would stay connected to their alma mater and each other. Apart from offering attractive features like profile pages, forums, calendars, and the sharing of resources, the interaction would allow the users to engage meaningfully with shared experiences and initiatives. Career development and mentorship activities relating to jobs and networking would provide essential support to the user to develop their career through further cooperation and collaboration.

I. INTRODUCTION

An Alumni Association Platform is an innovative digital platform designed to connect alumni, students in their work, and educational institutions within one unified interactive network which is beneficial for both parties. This service works as the meeting point from where lifelong relationships, overall professional well-being, and community service will seed from by connecting those who share a common academic heritage. It offers a variety of features, from custom user profiles to discussion boards to event management tools job portals and mentorship routes to ensure these bonds lead alumni back toward their respective institutions. Employing modern technologies such as AI-driven increased engagement through live communication and data insights, the platform promotes ideal experiences for the user by enabling collaboration and sharing knowledge or work. Those are benefits that ME-based benefits; beyond that, it recognizes achievements in the alumni community, archives retired memories in online storage, and launches philanthropic efforts such as scholarships and philanthropy that benefit future generations. The platform becomes a node for the extended community of an institution, creating a real and supporting environment for alumni comparing with global networks on pride and united growth—a facile solution to strengthen alumni relations and to cedar institutional legacy. An Alumni Social Network Platform is a new digital solution connecting alumni, present students, and educational institutions, creating a collaborative network that supports and enhances growth throughout these relationships. The platform that connects individuals with shared academic histories by providing tools and features to cultivate relationships, invest in their professional growth, and build a sense of community. Customized features and tools for creating user profiles and discussion forums, managing virtual events and career services, facilitating mentoring programs, and creating alumni directories also provide a virtual pen-pal atmosphere for networking and sharing knowledge in support of the Institution. Assisted with a host of exciting integrated state-of-the-art technology like AI-powered matchmaking for mentorship, data analytics for personalized recommendations, and seamless communication tools allow an easy and exciting user experience. In a more controlled way, it preserves institutional heritage through



International Journal of Innovative Research in Computer and Communication Engineering (IJIRCCCE)

(A Monthly, Peer Reviewed, Refereed, Scholarly Indexed, Open Access Journal)

employment success stories of its alumni, reunions, and a gallery of flashbacks of senior activities. Support fundraising activities, scholarship programs, and volunteerism thereby encouraging alumni to give back to their alma mater for future generation development. Collaborations between alumni and students are established. This allows them to exchange knowledge, share their skills, and mentor, further enriching the academic community. The platform creates opportunities for celebration, creates institutional pride, and creates lifelong connections with institutions. By establishing an active and inclusive global network, the alumni associative platform not only strengthens ties within the alumni community, but also enhances the institution's reputation and influence on a broader scale, making this a priceless infrastructure for creating bonds of fellowship and spirit of engagement.

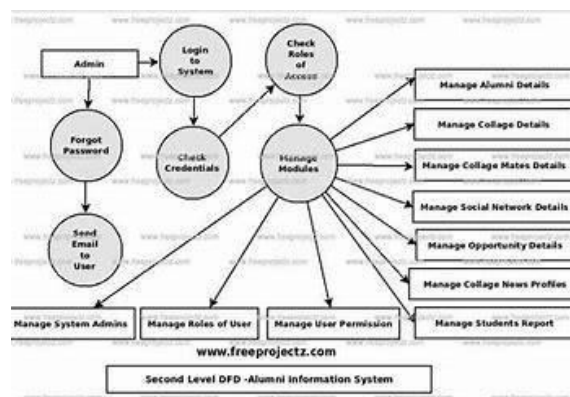
II. RESULTS

The installation of a distance alumni association has given benefits through the killing of two birds with one stone in promoting stronger interaction between alumni, current students, and educational institutions to a more effective community of active involvement. The conclusion of this platform has filled the gap between the students and their institution; thus increasing the alumni participation in institutional activities such as mentoring, fundraising, and even knowledge-sharing events. Increased user engagement could be witnessed in vibrant discussions during the virtual reunions, on networking opportunities, and inclusive projects made possible by the use of discussion forums, event calendars, and real-time communication tools.

Professional outcomes arise from having a strong network that has, in turn, opened up avenues for career growth and provided both alumni and current students with internships and job placements, further heightening institutional value. AI-powered matchmaking between mentors and mentees has gained favorable feedback for forging worthwhile connections between upper-level professionals and fresh graduates, further benefiting with training and solid career advice. The use of data analytics and CRM provides universities the chance to track engagement patterns, tailor their outreach efforts, and create an organization-wide understanding of alumni needs, leading to an effective customer service experience.

The platform has also successfully supported fundraising campaigns, with alumni contributing to scholarships, research initiatives, and infrastructure development, to signify their pride and never-dying commitment to their alma mater. Also, keeping shared memories through digital archives and event highlights has helped nostalgia and belonging. It further fortifies the pulling power of the alum. Challenges like initial user adoption and securing data privacy were countered with an easy-to-use design, specially held training sessions, and sound security protocols for acceptance and trust.

To summarize, this has turned into an alumni association platform that will change perception for peer relationships and professional development and offered institution pride generation, while summarily building a global, inclusive, and thriving alumni community. The success underscores the importance of combining technological solutions with community building, who guarantee continuous engagement and win-win scenarios for the alumni and their advance.





International Journal of Innovative Research in Computer and Communication Engineering (IJIRCCCE)

(A Monthly, Peer Reviewed, Refereed, Scholarly Indexed, Open Access Journal)

III. METEDODOLOGY

The methodology of an Alumni Associative Platform is to use digital technologies for enabling purposeful engagement practices to create an effective, interactive, and responsive network for alumni and their alma mater. It adopts a user-centric approach involving personalized profiles, AI-driven matchmaking for mentorship and networking, and analytics of data to create customized content and recommendations for events. Cloud-based systems create a solution for scalability and secure data storage with global access; mobile-friendly interfaces and real-time communication tools enhance convenience and connection. To integrate continuous feedback from users, the platform is constantly evolving Agile development methodologies to saturate the needs of its community changing over time.

The platform adopts gamification mechanics to increase engagement, including rewards for participation, alongside virtual and physical events, such as reunions, webinars, and serious professional development workshops. Integration with social media channels and targeted email campaigns are essential in maintaining communication, while collaborative tools, such as forums and project spaces, allow alumni to collaborate on initiatives. It also utilizes Customer Relationship Management systems to track user interactions and engagement trends and converts them into actionable insights for improving services.

Strategies for user engagement involve gamification tactics aimed at bolstering actual engagement through achievements, badges, and participation leaderboards. Although life may not have returned to normal yet, the organization plans virtual and hybrid webinars, panel discussions, reunions, and workshops, ensuring that alumni participation is maximized. Social media integration and AI-tailored emails allow knowledge sharing, peer support, and project collaboration between different members through forums, collaborative spaces, and discussion groups. The emphasis is on building relationships in the professional and personal domain through networking opportunities.

Generally, therefore, the platform incorporates efficient CRM (Customer Relationship Management) systems to manage alumni databases, engagement metrics, and targeted outreach campaigns through published portals. Feedback loops, via surveys and real-time polls, are used to continuously iterate on the platform according to user needs and wants. Highly prioritizing data privacy and security by following GDPR compliance and implementing encryption and access control mechanisms to shield user information.

Moreover, the platform not only provides concrete modules to assist with solicitation of funds, volunteer recruitment, and mentoring but also supports institutional objectives on that front. Integration with career services and academic departments creates a communication channel between the alumni and current students for opportunities such as internships, mentorships, and skill development. These methodologies used together shall always ensure that the Alumni Associative Platform shall remain an indispensable instrument of creating lifelong connectivity, professional growth, and continued engagement with the institution.



International Journal of Innovative Research in Computer and Communication Engineering (IJIRCCE)

(A Monthly, Peer Reviewed, Refereed, Scholarly Indexed, Open Access Journal)

Alumni Associative Platform is more than a mere online meeting space for the alumniant, but an intricate contact ecosystem that works to bring alumni and their universities into a vital relationship, fostering an environment of support for professional growth, personal engagement, and institutional success. Such engagement shall include multi-gathering platforms where both developed and new members can engage in open discussions fostering innovation while perpetuating the values of the institution into the future. Long- term impacts reflect sustainability by sustained engagement, resources acquiesced for course through present and future generations, and the value firms allocate toward their relationships with their alumni and the university.

REFERENCES

1. Babu M, Sandhiya K, Preetha V, Sankara Eshwari S, Ramya Chitra M. Design of Alumni Portal with Data Security. Proceedings of the Second International Conference on Electronics and Sustainable Communication Systems (ICESC). IEEE, 2021. DOI: 10.1109/ICESC51422.2021.9532986.
2. Shaimaa Q. Sabri, Akeela M. Ahmad, Maiwan B. Abdulrazzaq. Design and Implementation of Student and Alumni Web Portal. Science Journal of the University of Zakho, Vol. 5, No. 3, pp. 272–277, September 2017. DOI: 10.25271/2017.5.3.395.
3. Leonard L. Occiano, Allen Jons V. Reyes, Kristine T. Soberano. Web-based Alumni Management Information System: Its Efficiency and Usability in Reaching Out Graduates. International Journal of Research in Engineering and Science, Volume 11, Issue 8, August 2023, pp. 28–32. IJRES.
4. Rohit Singh, Rajat Singh Parmar, Saurabh Tripathi, Rohini Khalkar, Sheetal Patil. BVDUCOE College Alumni Portal. International Journal of Computer Science Trends and Technology, Volume 5, Issue 2, March-April 2017
5. Gunasekara P.D. Alumni Management System for Weeraketiya Rajapaksha Central College. Master's Thesis, University of Colombo School of Computing, 2017



INTERNATIONAL
STANDARD
SERIAL
NUMBER
INDIA



SJIF Scientific Journal Impact Factor



INTERNATIONAL JOURNAL OF INNOVATIVE RESEARCH

IN COMPUTER & COMMUNICATION ENGINEERING



9940 572 462



6381 907 438



ijircce@gmail.com



www.ijircce.com

Scan to save the contact details